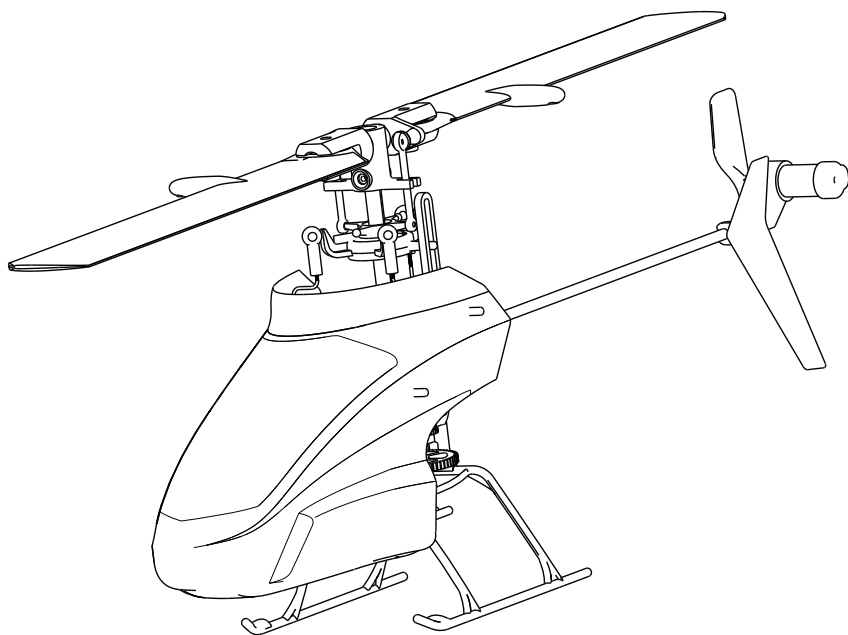


**RTF** **BNF**<sup>TM</sup>

# **BLADE**<sup>®</sup> **mCPX**

**#1 BY DESIGN**



**VERSION 2**

**Instruction Manual**  
**Bedienungsanleitung**  
**Manuel d'utilisation**  
**Manuale di Istruzioni**

## NOTICE

All instructions, warranties and other collateral documents are subject to change at the sole discretion of Horizon Hobby, Inc. For up-to-date product literature, visit [horizonhobby.com](http://horizonhobby.com) and click on the support tab for this product.


## Meaning of Special Language

The following terms are used throughout the product literature to indicate various levels of potential harm when operating this product:

**NOTICE:** Procedures, which if not properly followed, create a possibility of physical property damage AND a little or no possibility of injury.

**CAUTION:** Procedures, which if not properly followed, create the probability of physical property damage AND a possibility of serious injury.

**WARNING:** Procedures, which if not properly followed, create the probability of property damage, collateral damage, and serious injury OR create a high probability of superficial injury.

 **WARNING:** Read the ENTIRE instruction manual to become familiar with the features of the product before operating. Failure to operate the product correctly can result in damage to the product, personal property and cause serious injury.

This is a sophisticated hobby product. It must be operated with caution and common sense and requires some basic mechanical ability. Failure to operate this Product in a safe and responsible manner could result in injury or damage to the product or other property. This product is not intended for use by children without direct adult supervision. Do not attempt disassembly, use with incompatible components or augment product in any way without the approval of Horizon Hobby, Inc. This manual contains instructions for safety, operation and maintenance. It is essential to read and follow all the instructions and warnings in the manual, prior to assembly, setup or use, in order to operate correctly and avoid damage or serious injury.

## Additional Safety Precautions and Warnings

**Age Recommendation: Not for children under 14 years.** This is not a toy.

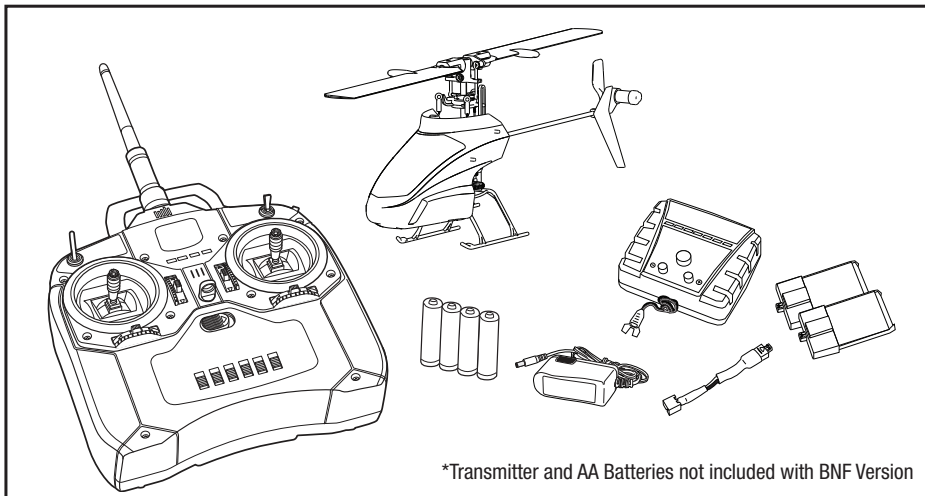
- Always keep a safe distance in all directions around your model to avoid collisions or injury. This model is controlled by a radio signal subject to interference from many sources outside your control. Interference can cause momentary loss of control.
- Always operate your model in open spaces away from full-size vehicles, traffic and people.
- Always carefully follow the directions and warnings for this and any optional support equipment (chargers, rechargeable battery packs, etc.).
- Always keep all chemicals, small parts and anything electrical out of the reach of children.
- Always avoid water exposure to all equipment not specifically designed and protected for this purpose. Moisture causes damage to electronics.
- Never place any portion of the model in your mouth as it could cause serious injury or even death.
- Never operate your model with low transmitter batteries.
- Always keep aircraft in sight and under control.
- Always move the throttle fully down at rotor strike.
- Always use fully charged batteries.
- Always keep transmitter powered on while aircraft is powered.
- Always remove batteries before disassembly
- Always keep moving parts clean.
- Always keep parts dry.
- Always let parts cool after use before touching.
- Always remove batteries after use.
- Never operate aircraft with damaged wiring.
- Never touch moving parts.

# Introduction

As you are about to see, the Blade® mCP X truly is an ultra micro heli experience unlike any other. Its advanced flybarless design reduces drag on the rotorhead and significantly boosts cyclic control response. This, combined with its exceptionally lightweight airframe, delivers a level of power and responsiveness that eclipses that of any ultra micro heli you may have flown before.

Inverted flight, loops, flips, rolls, funnels, hurricanes – the mCP X can do it all, indoors or out, with power to spare. If you're transitioning from a basic CCPM or fixed-pitched heli, you'll find the mCP X is a great way to get used to flying more agile CCPM helis without having to invest in a lot of expensive equipment or repairs.

Before you take the first flight though, please take the time to read through this manual and watch the included DVD. Both contain important pre-flight information as well as useful tips on binding your transmitter that will help ensure your first flight is a great one.



## Table of Contents

Battery Warnings and Guidelines.....	4
Low Voltage Cutoff (LVC).....	4
Battery Charging.....	5
First Flight Preparation .....	5
Flying Checklist.....	5
Programming Your Transmitter .....	6
Transmitter and Receiver Binding.....	7
Primary Flight Controls .....	8
Throttle Hold.....	9
Stunt Mode.....	9
Installing the Flight Battery .....	10
Flying the mCP X .....	10
Troubleshooting Guide.....	11
Exploded View and Parts Listings .....	12
Optional Parts.....	13
Main Board Plug Configuration.....	13
Warranty and Repair Policy.....	14
Customer Service Information.....	15
FCC Information.....	16
Compliance Information for the European Union.....	16

**RTF**  
BLH3600

**BNF**  
BLH3680

### Blade mCP X Specifications


<b>Length</b>	9.25 in (235mm)
<b>Height</b>	3.65 in (93mm)
<b>Main Rotor Diameter</b>	9.65 in (245mm)
<b>Tail Rotor Diameter</b>	1.40 in (36.5mm)
<b>Gross Weight</b>	1.60 oz (45.5 g)

To register your product online,  
visit [www.bladehelis.com](http://www.bladehelis.com)


## Battery Warnings and Guidelines

---

The Battery Charger (EFLC1006) included with the Blade mCP X has been designed to safely charge the Li-Po battery.

 **CAUTION:** All instructions and warnings must be followed exactly. Mishandling of Li-Po batteries can result in a fire, personal injury, and/or property damage.

- By handling, charging or using the included Li-Po battery, you assume all risks associated with lithium batteries.
- If at any time the battery begins to balloon or swell, discontinue use immediately. If charging or discharging, discontinue and disconnect. Continuing to use, charge or discharge a battery that is ballooning or swelling can result in fire.
- Always store the battery at room temperature in a dry area for best results.
- Always transport or temporarily store the battery in a temperature range of 40–120° F. Do not store battery or model in a car or direct sunlight. If stored in a hot car, the battery can be damaged or even catch fire.
- NEVER USE A Ni-Cd OR Ni-MH CHARGER. Failure to charge the battery with a compatible charger may cause fire resulting in personal injury and/or property damage.
- Never exceed the recommended charge rate.
- Never discharge Li-Po cells to below 3V under load.
- Never cover warning labels with hook and loop strips.

 **WARNING:** Only use an E-flite 6V power supply with this charger. DO NOT use a 12V power supply or property damage and injury could occur.

## Low Voltage Cutoff (LVC)

---

When a Li-Po battery is discharged below 3V, the battery may be damaged and may no longer accept a charge. The mCP X 3-in-1 control unit protects the flight battery from over-discharge by using Low Voltage Cutoff (LVC). Before the battery charge decreases too much, LVC removes power supplied to the motor. As power to the motor decreases, the LED on the 3-in-1 control unit blinks, showing some battery power is reserved for flight control and safe landing.

When the motor power decreases, land the aircraft immediately and recharge the flight battery.

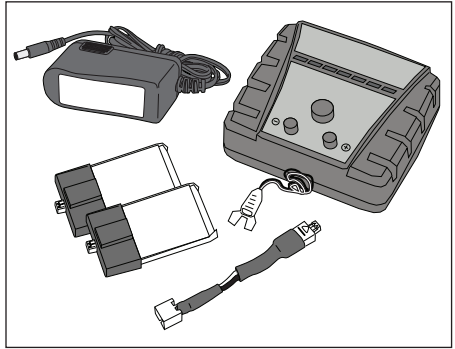
Disconnect and remove the Li-Po battery from the aircraft after each use to prevent trickle discharge. Before storage, charge the Li-Po battery to full capacity. During storage, make sure the battery charge does not fall below 3V.

**NOTICE:** Repeated flying to LVC will damage the battery.

## Battery Charging

### Celectra™ 1-Cell 3.7V Variable Rate DC Li-Po Charger Instructions

1. Connect the power supply to an appropriate power source.
2. Insert the output plug from the power supply into the power input slot of the Variable Rate Charger.
3. Select the appropriate charge current for your battery by pushing the + or -, which are the smaller buttons to the right and left of the Start (middle) button, (When charging your 200mAh battery, set the charger to 0.7 amps).
4. Connect the charge adapter to the Charger lead. Match the red dots on both the charge adapter and the Charger lead.
5. Properly connect the battery to the Charger lead. Match the red dots on both the battery and charger connectors.
6. Press the start button on the Variable rate charger to begin the charging process.



**NOTICE:** Only use the included charger.



**CAUTION: NEVER attempt to power the charger from an AC outlet without the use of a proper AC to DC adapter/power supply.**



**CAUTION: DO NOT connect charged or discharged Li-Po batteries if the power supply is connected to the charger while the power supply is not connected to a power source. Doing so will discharge and possibly damage the batteries.**

### LED functions under normal operation:

<b>SINGLE SOLID LED</b>	Shows Charge Current
<b>SINGLE LED FLASHING</b>	Charging
<b>MULTIPLE LEDs FLASHING</b>	Charge Almost Complete
<b>LEDs SWEEPING SIDE TO SIDE</b>	Charge Complete

## First Flight Preparation

- Remove and inspect contents
- Begin charging the flight battery
- Install the four AA batteries in the transmitter **(RTF ONLY)**
- Install the blades appropriate to your flying style. *The Fast Flight Main Rotor Blade Set is best used for outdoors or a smoother flying style. The High-performance Main Rotor Blade Set is intended for indoors or aggressive aerobatic maneuvers*
- Install the flight battery in the helicopter (once it has been fully charged)
- Program your computer transmitter (BNF Only)
- Test the controls
- Familiarize yourself with the controls
- Find a suitable area for flying

## Flying Checklist

- Always turn the transmitter on first
- Plug the flight battery into the lead from the 3-in-1 control unit
- Allow the 3-in-1 control unit to initialize and arm properly
- Fly the model
- Land the model
- Unplug the flight battery from the 3-in-1 control unit
- Always turn the transmitter off last

## Programming Your Transmitter (Computer Transmitters Only)

Program your transmitter before attempting to bind or fly the helicopter. If the throttle and pitch programming values are incorrect, the helicopter will not respond. Transmitter programming values are shown below for the Spektrum DX6i, DX7 and DX8. The Spektrum DX8 model file is also available for download online at the Spektrum DX8 Community.

### DX6i

SETUP LIST	ADJUST LIST									
<b>Model Type</b> HELI	<b>D/R &amp; Expo</b>			<b>Thro Curve</b>						
<b>Reverse</b>	0-AILE	70%	30%	NORM	0%	40%	60%	80%	100%	
THRO-N	0-ELEV	70%	30%	STUNT	100%	100%	100%	100%	100%	
AILE-N	0-RUDD	100%	INH	HOLD	0%	0%	0%	0%	0%	
ELEV-N	1-AILE	100%	30%	<b>Pitc Curve</b>						
RUDD-N	1-ELEV	100%	30%	NORM	30%	40%	50%	75%	100%	
GYRO-N	1-RUDD	100%	INH	STUNT	0%	25%	50%	75%	100%	
PITC-R	<b>Travel Adj</b>			HOLD	0%	25%	50%	75%	100%	
<b>Swash Type</b> 1 Servo 90	THRO	100%								
<b>Timer</b>	AILE	100%								
4:00 Basic Flying	ELEV	100%								
3:00 Advanced Flying	RUDD	100%								
	GYRO	100%								
	PITC	75%								

### DX7/DX7se

SYSTEM LIST	FUNCTION MODE									
<b>Model Type</b> HELI	<b>D/R &amp; EXP</b>			<b>Thro Curve</b>						
<b>Swash Type</b> 1 Servo 90	0-AILE	EXP	D/R	NORM	0%	40%	60%	80%	100%	
	0-ELEV	30%	70%	ST-1	100%	INH	80%	INH%	100%	
	0-RUDD	INH	100%	ST-2	100%	100%	100%	100%	100%	
	1-AILE	30%	100%	HOLD	0%	0%	0%	0%	0%	
	1-ELEV	30%	100%	<b>Pitc Curve</b>						
	1-RUDD	INH	100%	NORM	30%	INH	50%	INH	100%	
	<b>Travel Adj</b>			STUNT	0%	INH	50%	INH	100%	
	THRO	100%		HOLD	0%	INH	50%	INH	100%	
	AILE	100%		<b>Reversing SW</b>						
	ELEV	100%		THRO-N	RUDD-N	4:00	Basic Flying			
	RUDD	100%		AILE-N	GEAR-N	3:00	Advanced Flying			
	GEAR	100%		ELEV-N	PIT-N					
	PIT.	75%								

### DX8

SYSTEM SETUP	FUNCTION LIST									
<b>Model Type</b> HELI	<b>D/R &amp; Expo</b>			<b>Throttle Curve</b>						
<b>Swash Type</b> 1 Servo Normal	0-AILE	70%	30%	NORM	0%	40%	60%	80%	100%	
<b>F-Mode Setup</b> Flight Mode: F Mode Hold: Hold	0-ELEV	70%	30%	ST-1	100%	90%	80%	90%	100%	
	0-RUDD	100%	0%	ST-2	100%	100%	100%	100%	100%	
	1-AILE	100%	30%	HOLD	0%	0%	0%	0%	0%	
	1-ELEV	100%	30%	<b>Pitch Curve</b>						
	1-RUDD	100%	0%	NOR	30%	40%	50%	75%	100%	
	2-AILE	100%	30%	ST-1	0%	25%	50%	75%	100%	
	2-ELEV	100%	30%	ST-2	0%	25%	50%	75%	100%	
	2-RUDD	100%	0%	HOLD	0%	25%	50%	75%	100%	
	<b>SERVO SETUP</b>									
	<b>Travel</b>	<b>Reverse</b>	<b>Timer</b>							
	THRO	100%	THRO - N	4:00	Basic Flying					
	AILE	100%	AILE - N	3:00	Advanced Flying					
	ELEV	100%	ELEV - N							
	RUDD	100%	RUDD - N							
	GEAR	100%	GEAR - N							
	PIT.	75%	PIT. - N							

## Transmitter and Receiver Binding

If you purchased an RTF model, the transmitter is bound to the model at the factory.

To bind or re-bind your mCP X to your chosen transmitter, please follow the directions below:

Binding is the process of programming the receiver of the control unit to recognize the GUID (Globally Unique Identifier) code of a single specific transmitter. You need to 'bind' your chosen Spektrum™ or JR® DSM® technology equipped aircraft transmitter to the receiver for proper operation.

**NOTICE:** Use the Non-Computer Radio binding instructions if you are using a DX4e or DX5e transmitter with the mCP X BNF.

### ✓ Binding Procedure for Computer Radios:

1.	Disconnect the flight battery from the helicopter.
2.	Power off the transmitter and move all switches to the 0 position.
3.	Connect the flight battery to the helicopter. The 3-in-1 Control unit LED flashes after 5 seconds.
4.	Push in on the bind switch/button while powering on the transmitter.
5.	After 2–3 seconds, release the bind switch/button.
6.	Move the rudder control stick to full right. Continue to hold the rudder control stick to full right until the blue LED on the 3-in-1 control unit is solid.
7.	Release the rudder control stick.
8.	Disconnect the flight battery and power the transmitter off.

The throttle will not arm if the transmitter's throttle control is not put at the lowest position and the stunt mode switch is not in the 0 position.

If you encounter problems, obey binding instructions and refer to the troubleshooting guide for other instructions. If needed, contact the appropriate Horizon Product Support office.

For a list of compatible DSM transmitters, please visit [www.bindnfly.com](http://www.bindnfly.com).

### ✓ Binding Procedure for Non-Computer Radio (DX4e, DX5e)

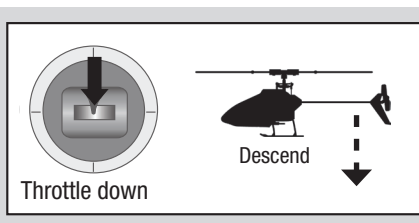
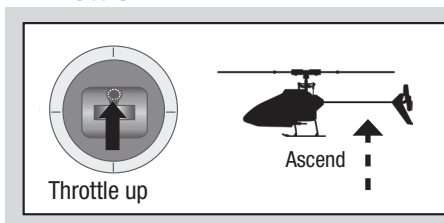
1.	Disconnect the flight battery from the helicopter.
2.	Power off the transmitter and move all switches to the 0 position.
3.	Connect the flight battery to the helicopter. The 3-in-1 Control unit LED flashes after 5 seconds.
4.	Push in on the trainer switch or button while powering on the transmitter.
5.	Move the rudder control stick to full left after the transmitter LED lights flash twice.
6.	Release the trainer switch/button. Continue to hold the rudder control stick to full left until the blue LED on the 3-in-1 control unit is solid.
7.	Release the rudder control stick.
8.	Push in on the trainer switch/button. The blue LED on the 3-in-1 control unit flashes to confirm the helicopter is in non-computer mode.
9.	Disconnect the flight battery and power the transmitter off.

If the swashplate moves up and down when the trainer switch is moved, the helicopter is in computer transmitter mode; repeat binding procedure.

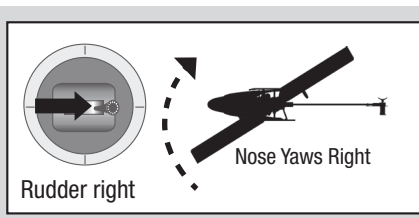
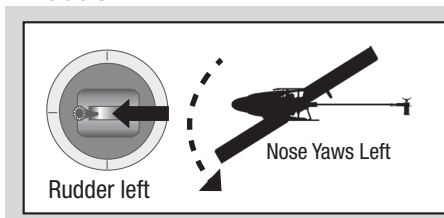
# Understanding the Primary Flight Controls

If you are not familiar with the controls of your mCP X, take a few minutes to familiarize yourself with them before attempting your first flight.

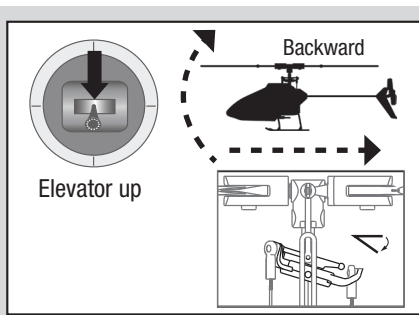
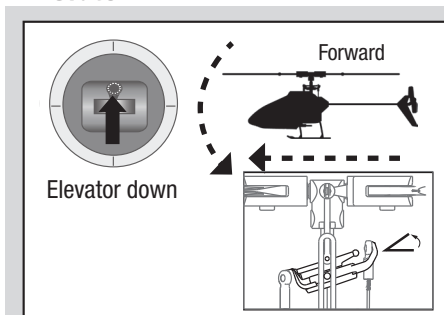
## Throttle



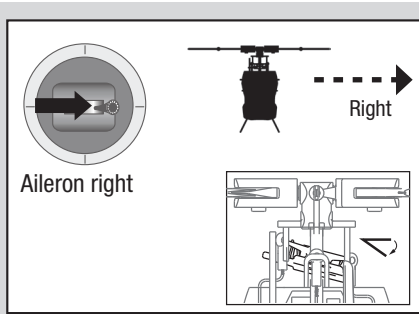
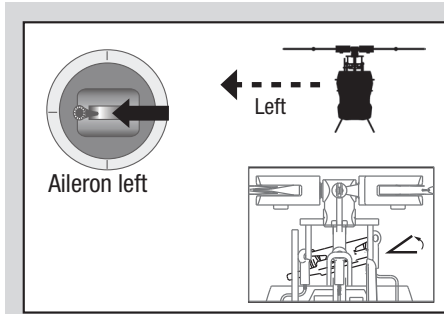
## Rudder



## Elevator



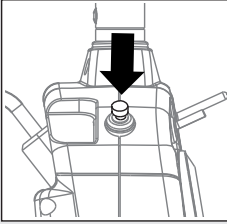
## Aileron





## Throttle Hold

Throttle hold is used to turn off the helicopter motors if the helicopter is out of control, in danger of crashing or both. Activate throttle hold anytime the helicopter is in danger to reduce the chance of damaging the helicopter in a crash. Throttle hold will stop the motor in normal or stunt mode.

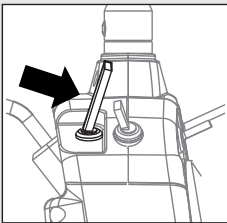
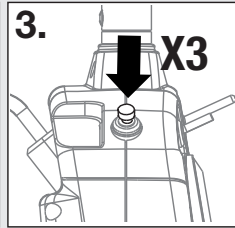
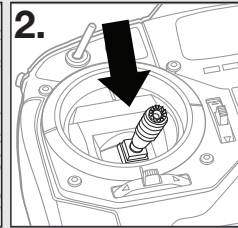
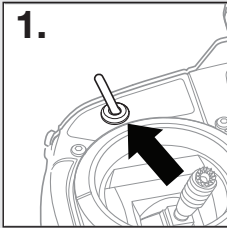


### Throttle Hold ON (DX4e)

Press the trainer button anytime to turn throttle hold ON after connecting the battery to the helicopter. The blue LED flashes, indicating throttle hold is ON.

### Throttle Hold OFF (DX4e)

1. Make sure the AUX switch is in the OFF position.
2. Lower the throttle stick.
3. Press the trainer button three times within 3 seconds. The blue LED is solid.

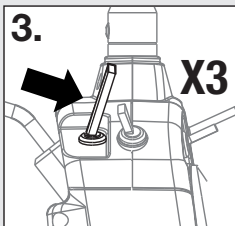
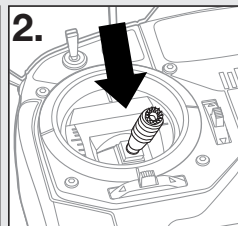
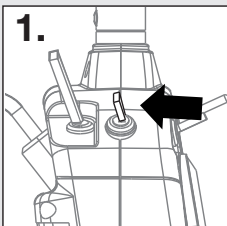


### Throttle Hold ON (DX5e)

Pull the trainer switch anytime to turn throttle hold ON after connecting the battery to the helicopter. The blue LED flashes, indicating throttle hold is ON.

### Throttle Hold OFF (DX5e)

1. Make sure the Gear switch is in the (0) position.
2. Lower the throttle stick.
3. Pull the trainer switch three times within 3 seconds. The blue LED is solid.



## Stunt Mode

Stunt Mode allows the helicopter to fly inverted and perform aerobatics. The throttle runs continuously when Stunt Mode is ON, regardless of throttle stick position. Turn Stunt Mode OFF to return control to the throttle stick.

Use the AUX/ACT switch on the DX4e transmitter or Gear switch on the DX5e transmitter to activate Stunt Mode.

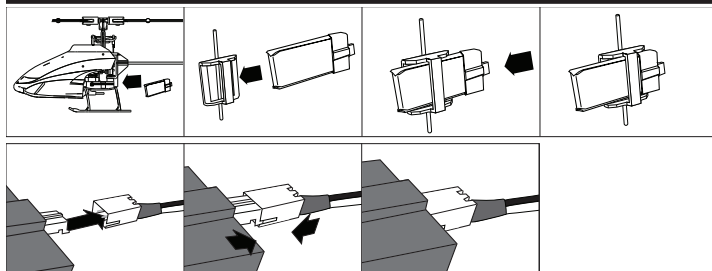
DX4e – AUX/ACT OFF – Normal Mode

DX5e – Ch 5 (0) – Normal Mode

AUX/ACT ON – Stunt Mode

DX5e – Ch 5 (1) – Stunt Mode

## Installing the Flight Battery



1. Lower the throttle and throttle trim to the lowest settings.
2. Power on the transmitter.
3. Install the flight battery in the battery holder. Connect the battery cable to the 3-in-1 control unit.  
**NOTICE:** Do not allow the helicopter to move until the blue LED on the 3-in-1 control unit is solid.  
**NOTICE:** Always disconnect the Li-Po battery from the 3-in-1 control unit of the aircraft when not flying. Failure to do so will render the battery unusable.

## Flying the mCP X

**Consult local laws and ordinances before choosing a location to fly your aircraft.** Select a large, open area away from people and objects. The Blade mCP X can fly outdoors or indoors in a gymnasium.

**CAUTION:** Please take a few minutes to familiarize yourself with the Blade mCP X primary controls before attempting your first flight. The Blade mCP X is more responsive than other Blade micro helicopters like the Blade mSR. Seek help from an experienced pilot if you are new to collective pitch helicopters.

### Takeoff

Gradually increase the throttle to allow the helicopter time to increase rotor head speed.

**CAUTION:** Do not give any aileron, elevator or rudder commands before takeoff or the helicopter may crash.

### Flying

The helicopter lifts off the ground when the rotor head reaches a suitable speed. Establish a low-level hover to verify proper operation of your helicopter. You will not need to set any trim; the flybarless design of the mCP X renders trim unnecessary.

For pilots new to collective pitch helicopters, familiarize yourself with your mCP X in normal mode. Discover the rates that fit your flying style.

**CAUTION:** Always fly the helicopter with your back to the sun to prevent loss of flight control.

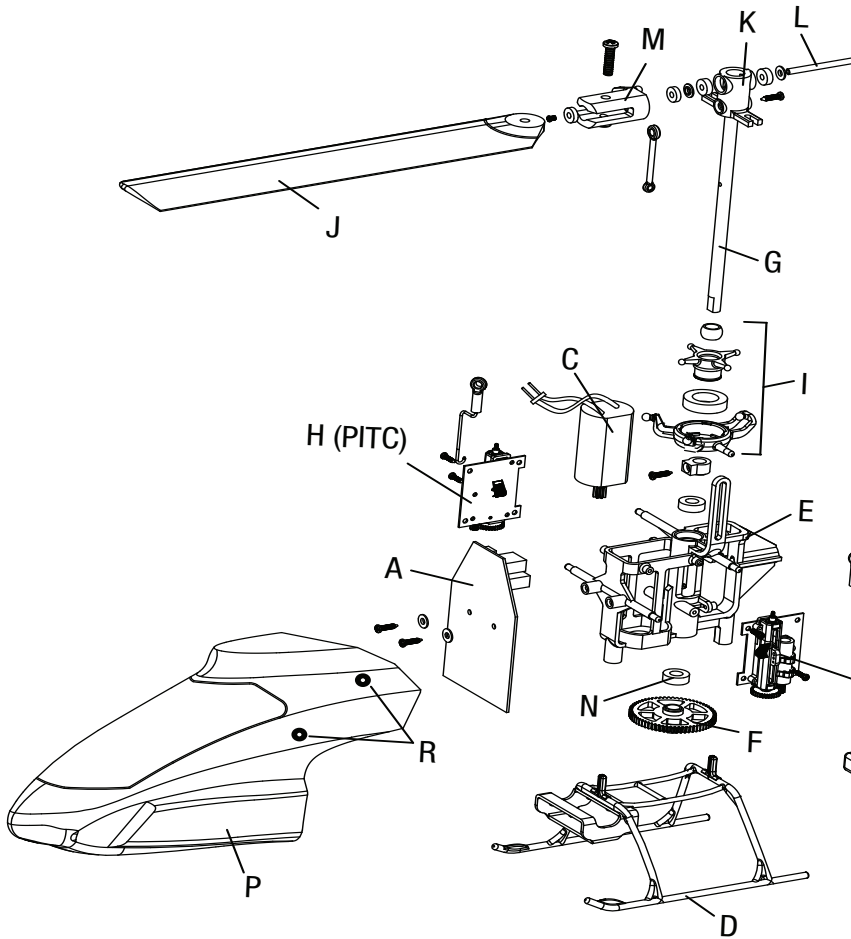
### Landing

Establish a low level hover. Slowly lower the throttle until the helicopter lands.

# Troubleshooting Guide

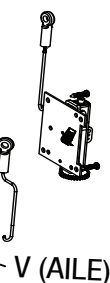
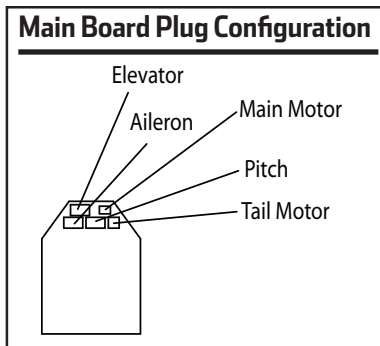
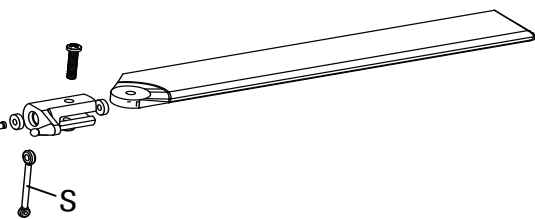
Problem	Possible Cause	Solution
Helicopter will not initialize	Throttle at high position	Reset controls with throttle stick and throttle trim at center or lowest setting
	Switches not in normal position	Set flight mode to OFF/0 and exit throttle hold.
	Pitch or throttle servo reversing improperly configured	Reset servo reversing <i>Refer to "Programming your Transmitter"</i>
Helicopter will not spool up	Throttle hold on	Turn off HOLD with throttle low and trim centered or low. <i>Refer to "Throttle Hold"</i>
	Low battery voltage	Completely recharge flight battery
Motor power decreases during flight	Receiver uses default soft Low Voltage Cutoff (LVC)	Recharge flight battery or replace battery that is no longer performing
Cannot turn off throttle hold	Stunt Mode switch still on	Set flight mode to OFF/ 0 and exit throttle hold.
	Throttle not at low position	Reset controls with throttle stick and throttle trim at center or lowest setting
Powers off when flying upside down (inverted)	Stunt Mode off	When flying, switch stunt mode to ON/1 before flying inverted.
Will not bind properly to non-computer radio	Helicopter binds differently to non-computer radios	Release bind button/ switch after applying left rudder. Do not hold the bind button/ switch after applying left rudder.
Poor tail authority	Tail boom is cracked	Replace tail boom
	The tail rotor blade is warped or bent.	Twist rotor blade back into position or replace.
Climb out rate is greatly reduced	Main gear has slipped on the main shaft.	Push main gear back into position.
LED on receiver flashes rapidly and aircraft will not link to transmitter	Less than a 5-second wait after powering transmitter and before connecting flight battery to aircraft	Disconnect then reconnect flight battery to aircraft
	Transmitter too near aircraft during binding process	Move powered transmitter a few feet from aircraft, disconnect and reconnect flight battery to aircraft
	Aircraft not bound to transmitter	Bind transmitter to aircraft receiver
	Aircraft bound to different model memory (ModelMatch™ radios only)	Select correct model memory on transmitter
	Low charge in transmitter batteries	Replace or charge transmitter batteries
Helicopter vibrates or shakes in flight	Damaged rotor blades, spindle or blade grips	Check main rotor blades and blade grips for cracks or chips. Replace damaged parts. Replace bent spindle.

# Exploded View and Parts Listings

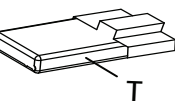


Part #	Description
A	BLH3601 Flybarless 3-in-1 Control Unit, Receiver/ESCs/Gyros: mCPX/2
B	BLH3602 Tail Boom Assembly with Tail Motor/Rotor/Mount: mCPX/2
C	BLH3503 Main Motor with Pinion: mCP X
D	BLH3504 Landing Skid and Battery Mount: mCP X
E	BLH3505 Main Frame with hardware: mCP X
F	BLH3506 EFLH3006 Main Gear: BMSR, mCP X
G	BLH3507 Carbon Fiber Main Shaft with Collar and Hardware: mCP X
H	BLH3508 Servo Pushrod Set with Ball Links (3): mCP X

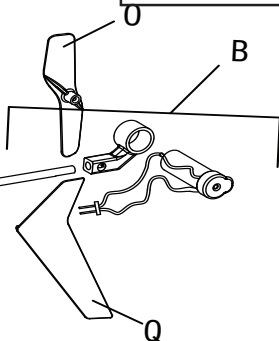
Part #	Description
I	BLH3509 Complete Precision Swashplate: mCP X
J	BLH3510 High-performance Main Rotor Blade Set with Hardware: mCP X
	BLH3511 Fast Flight Main Rotor Blade Set with Hardware: mCP X ( <i>not shown</i> )
K	BLH3512 Main Rotor Hub with Hardware: mCP X
L	BLH3513 Feathering Spindle with O-rings, Bushings, and Hardware: mCP X
M	BLH3514 Main Blade Grips with Bearings: mCP X
N	BLH3515 EFLH2215 Main Shaft Bearing 3x6x2mm(2):BMCX/2/MSR, FHX, MH-35, mCP X
O	BLH3603 Tail Rotor (1): mCPX/2



- V (AILE)



U (ELEV)



## Optional Parts

Part #	Description
BLH3519	Complete Green Canopy with Vertical Fin: mCP X <i>(not shown)</i>
BLH3520G	Green Vertical Fin with Decal <i>(not shown)</i>
EFLC1004	Celectra 4 port charger

Part #	Description
P	BLH3518 Complete Red Canopy with Vertical Fin: mCP X
Q	BLH3520R Red Vertical Fin with Decal: mCP X
R	BLH3521 Canopy Mounting Grommets (8): BMCX2/T, MSR, FHX, MH-35, mCP X
S	BLH3522 Rotor Head Linkage Set (8): mCP X
	BLH3523 Hardware Set: mCP X <i>(not shown)</i>
T	EFLB 2001S30 200mAh 1S 3.7V 30C Li-Po Battery
	EFLA 7002UM 1s High Current Ultra Micro Battery Adapter Lead <i>(not shown)</i>
U	SPMAS 2000LBB 1.8-Gram Linear Ultra Micro Servo

Part #	Description
V	SPM6833 1.8-Gram Linear Ultra Micro Servo Replacement Servo Mechanics
	EFLC1005 AC to 6VDC 1.5-Amp Power Supply (US) <i>(not shown)</i>
	EFLC 1005UK AC to 6VDC 1.5-Amp Power Supply (UK) <i>(not shown)</i>
	EFLC 1005EU AC to 6VDC 1.5-Amp Power Supply (EU) <i>(not shown)</i>
	EFLC 1005AU AC to 6VDC 1.5-Amp Power Supply (AU) <i>(not shown)</i>
	EFLC1006 Celectra 1S 3.7 Variable Rate DC Li-Po Charger <i>(not shown)</i>
	EFLH2226 Body/Canopy Mounting O-Ring (8): BMCX/MSR

## Limited Warranty

### What this Warranty Covers

Horizon Hobby, Inc., (Horizon) warranties that the Products purchased by the ("Product") will be free from defects in materials and workmanship at the date of purchase by the Purchaser.

### What is Not Covered

This warranty is not transferable and does not cover (i) cosmetic damage, (ii) damage due to acts of God, accident, misuse, abuse, negligence, commercial use, or due to improper use, installation, operation or maintenance, (iii) modification of or to any part of the Product, (iv) attempted service by anyone other than a Horizon Hobby authorized service center, or (v) Products not purchased from an authorized Horizon dealer.

OTHER THAN THE EXPRESS WARRANTY ABOVE, HORIZON MAKES NO OTHER WARRANTY OR REPRESENTATION, AND HEREBY DISCLAIMS ANY AND ALL IMPLIED WARRANTIES, INCLUDING, WITHOUT LIMITATION, THE IMPLIED WARRANTIES OF NON-INFRINGEMENT, MERCHANTABILITY AND FITNESS FOR A PARTICULAR PURPOSE. THE PURCHASER ACKNOWLEDGES THAT THEY ALONE HAVE DETERMINED THAT THE PRODUCT WILL SUITABLY MEET THE REQUIREMENTS OF THE PURCHASER'S INTENDED USE.

### Purchaser's Remedy

Horizon's sole obligation and purchaser's sole and exclusive remedy shall be that Horizon will, at its option, either (i) service, or (ii) replace, any Product determined by Horizon to be defective. Horizon reserves the right to inspect any and all Product(s) involved in a warranty claim. Service or replacement decisions are at the sole discretion of Horizon. Proof of purchase is required for all warranty claims. SERVICE OR REPLACEMENT AS PROVIDED UNDER THIS WARRANTY IS THE PURCHASER'S SOLE AND EXCLUSIVE REMEDY.

### Limitation of Liability

HORIZON SHALL NOT BE LIABLE FOR SPECIAL, INDIRECT, INCIDENTAL OR CONSEQUENTIAL DAMAGES, LOSS OF PROFITS OR PRODUCTION OR COMMERCIAL LOSS IN ANY WAY, REGARDLESS OF WHETHER SUCH CLAIM IS BASED IN CONTRACT, WARRANTY, TORT, NEGLIGENCE, STRICT LIABILITY OR ANY OTHER THEORY OF LIABILITY, EVEN IF HORIZON HAS BEEN ADVISED OF THE POSSIBILITY OF SUCH DAMAGES. Further, in no event shall the liability of Horizon exceed the individual price of the Product on which liability is asserted. As Horizon has no control over use, setup, final assembly, modification or misuse, no liability shall be assumed nor accepted for any resulting damage or injury. By the act of use, setup or assembly, the user accepts all resulting liability. If you as the purchaser or user are not prepared to accept the liability associated with the use of the Product, purchaser is advised to return the Product immediately in new and unused condition to the place of purchase.

### Law

These terms are governed by Illinois law (without regard to conflict of law principals). This warranty gives you specific legal rights, and you may also have other rights which vary from state to state. Horizon reserves the right to change or modify this warranty at any time without notice.

## WARRANTY SERVICES

### Questions, Assistance, and Services

Your local hobby store and/or place of purchase cannot provide warranty support or service. Once assembly, setup or use of the Product has been started, you must contact your local distributor or Horizon directly. This will enable Horizon to better answer your questions and service you in the event that you may need any assistance. For questions or assistance, please direct your email to [productsupport@horizonhobby.com](mailto:productsupport@horizonhobby.com), or call 877.504.0233 toll free to speak to a Product Support representative. You may also find information on our website at [www.horizonhobby.com](http://www.horizonhobby.com).

### Inspection or Services

If this Product needs to be inspected or serviced, please use the Horizon Online Service Request submission process found on our website or call Horizon to obtain a Return Merchandise Authorization (RMA) number. Pack the Product securely using a shipping carton. Please note that original boxes may be included, but are not designed to withstand the rigors of shipping without additional protection. Ship via a carrier that provides tracking and insurance for lost or damaged parcels, as Horizon is not responsible for merchandise until it arrives and is accepted at our facility. An Online Service Request is available at <http://www.horizonhobby.com> under the Support tab. If you do not have internet access, please contact Horizon Product Support to obtain a RMA number along with instructions for submitting your product for service. When calling Horizon, you will be asked to provide your complete name, street address, email address and phone number where you can be reached during business hours. When sending product into Horizon, please include your RMA number, a list of the included items, and a brief summary of the problem. A copy of your original sales receipt must be included for warranty consideration. Be sure your name, address, and RMA number are clearly written on the outside of the shipping carton.

**Notice: Do not ship LiPo batteries to Horizon. If you have any issue with a LiPo battery, please contact the appropriate Horizon Product Support office.**

### Warranty Requirements

**For Warranty consideration, you must include your original sales receipt verifying the proof-of-purchase date.** Provided warranty conditions have been met, your Product will be serviced or replaced free of charge. Service or replacement decisions are at the sole discretion of Horizon.

### Non-Warranty Service

**Should your service not be covered by warranty service will be completed and payment will be required without notification or estimate of the expense unless the expense exceeds 50% of the retail purchase cost.** By submitting the item for service you are agreeing to payment of the service without notification. Service estimates are available upon request. You must include this request with your item submitted for service. Non-warranty service estimates will be billed a minimum of ½ hour of labor. In addition you will be billed for return freight. Horizon accepts money orders and cashiers checks, as well as Visa, MasterCard, American Express, and Discover cards. By submitting any item to Horizon for service, you are agreeing to Horizon's Terms and Conditions found on our website <http://www.horizonhobby.com/Service/Request/>.

## Warranty and Service Contact Information

Country of Purchase	Horizon Hobby	Address	Phone Number/Email Address
United States of America	Horizon Service Center (Electronics and engines)	4105 Fieldstone Rd Champaign, Illinois 61822 USA	877-504-0233 Online Repair Request: visit <a href="http://www.horizonhobby.com/service">www.horizonhobby.com/service</a>
	Horizon Product Support (All other products)	4105 Fieldstone Rd Champaign, Illinois 61822 USA	877-504-0233 <a href="mailto:productsupport@horizonhobby.com">productsupport@horizonhobby.com</a>
United Kingdom	Horizon Hobby Limited	Units 1-4 Ployters Rd Staple Tye Harlow, Essex CM18 7NS United Kingdom	+44 (0) 1279 641 097 <a href="mailto:sales@horizonhobby.co.uk">sales@horizonhobby.co.uk</a>
Germany	Horizon Technischer Service	Hamburger Str. 10 25335 Elmshorn Germany	+49 4121 46199 66 <a href="mailto:service@horizonhobby.de">service@horizonhobby.de</a>
France	Horizon Hobby SAS	14 Rue Gustave Eiffel Zone d'Activité du Réveil Matin 91230 Montgeron	+33 (0) 1 60 47 44 70 <a href="mailto:infofrance@horizonhobby.com">infofrance@horizonhobby.com</a>

## Customer Service Information

Country of Purchase	Horizon Hobby	Address	Phone Number/Email Address
United States of America	Sales	4105 Fieldstone Rd Champaign, Illinois 61822 USA	(800) 338-4639 <a href="mailto:sales@horizonhobby.com">sales@horizonhobby.com</a>
United Kingdom	Horizon Hobby Limited	Units 1-4 Ployters Rd Staple Tye Harlow, Essex CM18 7NS United Kingdom	+44 (0) 1279 641 097 <a href="mailto:sales@horizonhobby.co.uk">sales@horizonhobby.co.uk</a>
Germany	Horizon Hobby GmbH	Hamburger Str. 10 25335 Elmshorn Germany	+49 4121 46199 60 <a href="mailto:service@horizonhobby.de">service@horizonhobby.de</a>
France	Horizon Hobby SAS	14 Rue Gustave Eiffel Zone d'Activité du Réveil Matin 91230 Montgeron	+33 (0) 1 60 47 44 70 <a href="mailto:infofrance@horizonhobby.com">infofrance@horizonhobby.com</a>

## FCC Information

This device complies with part 15 of the FCC rules. Operation is subject to the following two conditions: (1) This device may not cause harmful interference, and (2) this device must accept any interference received, including interference that may cause undesired operation.

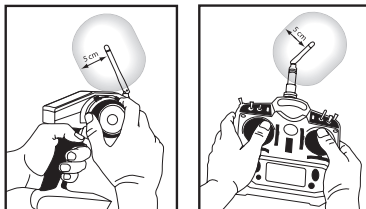
**CAUTION:** Changes or modifications not expressly approved by the party responsible for compliance could void the user's authority to operate the equipment.

This product contains a radio transmitter with wireless technology which has been tested and found to be compliant with the applicable regulations governing a radio transmitter in the 2.400GHz to 2.4835GHz frequency range.

### Antenna Separation Distance

When operating your E-flite transmitter, please be sure to maintain a separation distance of at least 5 cm between your body (excluding fingers, hands, wrists, ankles and feet) and the antenna to meet RF exposure safety requirements as determined by FCC regulations.

These illustrations show the approximate 5 cm RF exposure area and typical hand placement when operating your E-flite transmitter.



## Compliance Information for the European Union

AT	BG	CZ	CY	DE
DK	ES	FI	FR	GR
HU	IE	IT	LT	LU
LV	MT	NL	PL	PT
RO	SE	SI	SK	UK

### Declaration of Conformity

(in accordance with ISO/IEC 17050-1)



No. HH2011081401

Product(s): Blade mCP X 2 RTF (DX4e Transmitter)  
Item Number(s): BLH3600EU1 (EU mode 1), BLH3600EU2 (EU mode 2),  
BLH3600UK1 (UK mode 1), BLH3600UK2 (UK mode 2)  
Equipment class: 2

The object of declaration described above is in conformity with the requirements of the specifications listed below, following the provisions of the European R&TTE Directive 1999/5/EC and EMC Directive 2004/108/EC:

**EN 300-328 V1.7.1**

**EN 301 489-1 V1.7.1: 2006**

**EN 301 489-17 V1.3.2: 2008**

**EN 60950-1:2006+A11**

**EN55022: 2006,**

**EN55024: 1998+A1: 2001+A2: 2003**

**(EN61000-4-2: 2001, EN61000-4-3: 2006, EN61000-4-8: 2001)**

Signed for and on behalf of:

Horizon Hobby, Inc.  
Champaign, IL USA  
Aug 14, 2011

Steven A. Hall  
Vice President  
International Operations and Risk Management  
Horizon Hobby, Inc.



## Declaration of Conformity

(in accordance with ISO/IEC 17050-1)



No. HH2011081402

Product(s): Blade mCP X 2 BNF

Item Number(s): BLH3680EU, BLH3680UK

Equipment class: 1

The object of declaration described above is in conformity with the requirements of the specifications listed below, following the provisions of the European R&TTE Directive 1999/5/EC and EMC Directive 2004/108/EC:

**EN 301 489-1 V1.7.1: 2006**

**EN 301 489-17 V1.3.2: 2008**

**EN55022: 2006,**

**EN55024: 1998+A1: 2001+A2: 2003**

**(EN61000-4-2: 2001, EN61000-4-3: 2006, EN61000-4-8: 2001)**

Signed for and on behalf of:  
Horizon Hobby, Inc.  
Champaign, IL USA  
Aug 14, 2011

Steven A. Hall  
Vice President  
International Operations and Risk Management  
Horizon Hobby, Inc.

### Instructions for disposal of WEEE by users in the European Union



This product must not be disposed of with other waste. Instead, it is the user's responsibility to dispose of their waste equipment by handing it over to a designated collection point for the recycling of waste electrical and electronic equipment. The separate collection and recycling of your waste equipment at the time of disposal will help to conserve natural resources and make sure that it is recycled in a manner that protects human health and the environment. For more information about where you can drop off your waste equipment for recycling, please contact your local city office, your household waste disposal service or where you purchased the product.

©2011 Horizon Hobby, Inc

Blade, E-flite, Celectra, Bind-N-Fly, DSM, JR and ModelMatch are trademarks or registered trademarks of Horizon Hobby, Inc  
The Spektrum trademark is used with permission of Bachmann Industries, Inc.

US 7,391,320, D578,146. US 7,898,130. PRC patent number ZL 200720069025.2. Other patents pending.

Created 8/11 34551 BLH3600/BLH3680