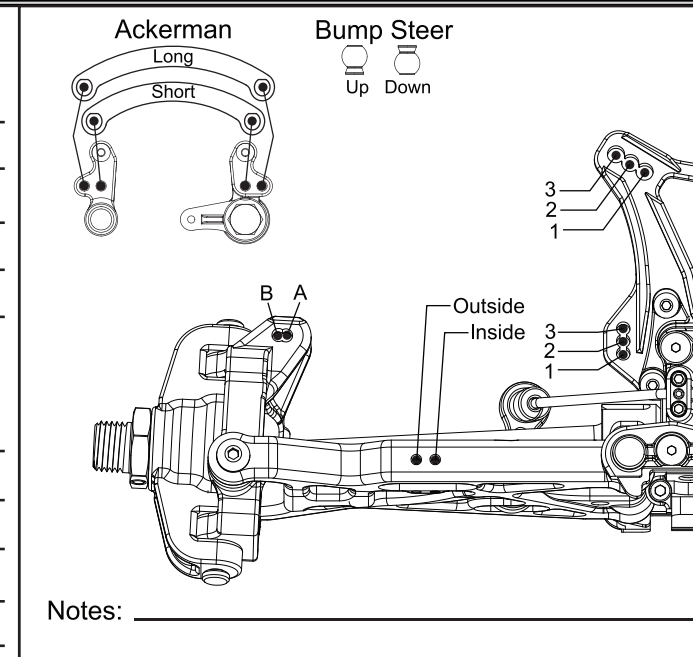
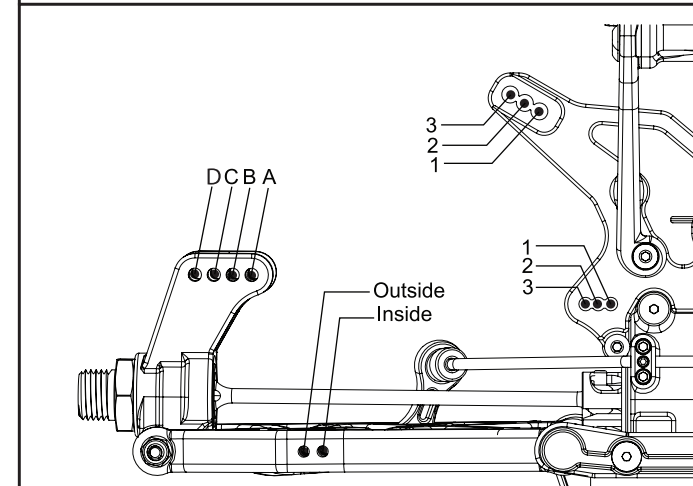


Name: 8IGHT-E 2.0 Race Roller Vehicle Setup		Date: _____	Event: _____
City: _____		Track: _____	
Track Conditions: <input type="checkbox"/> Indoor <input type="checkbox"/> Tight <input type="checkbox"/> Smooth <input type="checkbox"/> Hard Packed <input type="checkbox"/> Blue Groove <input type="checkbox"/> Wet <input type="checkbox"/> Low Bite <input type="checkbox"/> High Bite <input type="checkbox"/> Outdoor <input type="checkbox"/> Open <input type="checkbox"/> Rough <input type="checkbox"/> Loose/Loamy <input type="checkbox"/> Dry <input type="checkbox"/> Dusty <input type="checkbox"/> Med Bite <input type="checkbox"/> Other _____			

**Front Suspension**  
 Toe: 2 degrees of toe out  
 Ride Height: 27mm  
 Camber: -1 degree  
 Caster: Stock(20 degrees)  
 Sway Bar: 2.3mm  
 Piston/Oil: 54/40 wt Losi  
 Spring: Silver 4.4 lbs  
 Limiter/Droop: See shock length  
 Overall Shock Length: 95mm  
 Steering Ackerman: Long  
 Bump Steer: Down  
 Camber Link: 2/B  
 Shock Location: 2/Inside
**Differentials**  
 Front:  Standard  Smart  
 Spring Wire Dia: \_\_\_\_\_  
 Qty of Springs: \_\_\_\_\_  
 Ramp Plate: \_\_\_\_\_  
 Grease: \_\_\_\_\_  
 Diff Fluid: Losi 5000 wt  
 Center:  Standard  Smart  
 Spring Wire Dia: \_\_\_\_\_  
 Qty of Springs: \_\_\_\_\_  
 Ramp Plate: \_\_\_\_\_  
 Grease: \_\_\_\_\_  
 Diff Fluid: Losi 5000 wt

 Notes: \_\_\_\_\_  
 \_\_\_\_\_  
 \_\_\_\_\_

**Rear Suspension**  
 Toe: 3 degrees  
 Anti-Squat: 3 degrees  
 Ride Height: 29mm  
 Camber: -2 degrees  
 Rear Hub Spacing: Back  
 Sway Bar: 2.3mm  
 Piston/Oil: 56/25 wt Losi  
 Spring: Green 3.1 lbs  
 Limiter/Droop: See shock length  
 Overall Shock Length: 106mm  
 Camber Link: 2/B  
 Shock Location: 2/Inside  
 Rear Diff Fluid: Losi 2000 wt
**Power Train**  
 Motor: 1700Kv Battery: 4S 5000mAh LiPo  
 Spur: 45 (Recommended)  
 Pinion: 15

 Notes: \_\_\_\_\_  
 \_\_\_\_\_  
 \_\_\_\_\_

**ESC**  
 Throttle Limit: 0%  
 Motor Timing: Normal  
 Drag Brake: 4%  
 Braking %: 20%  
 BEC Voltage: 6.0V  
 Initial Acceleration: High  
 Neutral Deadband: 3%
**Tires**  
 Type \_\_\_\_\_ Compound \_\_\_\_\_ Insert \_\_\_\_\_  
 Front: \_\_\_\_\_  
 Rear: \_\_\_\_\_  
 Notes: \_\_\_\_\_  
 \_\_\_\_\_  
 \_\_\_\_\_

# EIGHT-E 2.0™

1/8-SCALE 4WD COMPETITION ELECTRIC BUGGY RACE ROLLER®  
 INSTRUCTION MANUAL  
 BEDIENUNGSANLEITUNG  
 MANUEL D'UTILISATION  
 MANUALE DI ISTRUZIONI


**UNITED STATES:**  
 4710 E. Guasti Road  
 Ontario, CA 91761  
 Phone: 909-390-9595  
 Fax: 909-390-5356

**UNITED KINGDOM:**  
 Units 1-4 Ployters Rd  
 Staple Tye  
 Harlow, Essex  
 CM18 7NS  
 Phone: +44 (0) 1279 641 097

**GERMANY:**  
 Hamburger Strasse 10  
 25335 Elmshorn  
 Phone: 49-4121461-9960

**WWW.LOSI.COM**  
 E-mail - feedback@losi.com  
 www.horizonhobby.com


**STEP I-01** Intro to the *8IGHT-E 2.0*™ Manual

## Welcome Team Losi Racing *8IGHT-E 2.0* Owner!

### NOTICE

All instructions, warranties and other collateral documents are subject to change at the sole discretion of Horizon Hobby, Inc. For up-to-date product literature, visit <http://www.horizonhobby.com> and click on the support tab for this product.

### Meaning of Special Language

**WARNING:** Procedures, which if not properly followed, create the probability of property damage, collateral damage, and serious injury OR create a high probability of superficial injury.

**WARNING:** Read the ENTIRE instruction manual to become familiar with the features of the product before operating. Failure to operate the product correctly can result in damage to the product, personal property and cause serious injury. This is a sophisticated hobby product and NOT a toy. It must be operated with caution and common sense and requires some basic mechanical ability. Failure to operate this Product in a safe and responsible manner could result in injury or damage to the product or other property. This product is not intended for use by children without direct adult supervision. Do not attempt disassembly, use with incompatible components or augment product in any way without the approval of Horizon Hobby, Inc. This manual contains instructions for safety, operation and maintenance. It is essential to read and follow all the instructions and warnings in the manual, prior to assembly, setup or use, in order to operate correctly and avoid damage or serious injury.

### Safety Precautions and Warnings

Read and follow all instructions and safety precautions before use. Improper use can result in fire, serious injury and damage to property.

### Components

Some electronic components can become hot while in use. Do not touch parts until cool. Use only with compatible components. Should any compatibility questions exist please refer to the product instructions, the component instructions or contact Horizon Hobby, Inc.

### Batteries

Always follow the manufacturer's instructions when using and disposing of any batteries. Mishandling of Li-Po batteries can result in fire causing serious injury and damage.

### Smal Parts

This kit includes small parts and should not be left unattended near children as choking and serious injury could result.

### Safe Operating Recommendations

- Inspect your model before every run to make certain it is track worthy.
- Be aware of any other radio frequency user who may present an interference problem.
- Always be courteous and respectful of other users of your selected driving area.
- Choose an area clear of obstacles and large enough to safely accommodate your driving activity.
- Make certain this area is clear of friends and spectators prior to running your vehicle.
- Be aware of other activities in the vicinity of your path that could cause potential conflict.

### IMPORTANT SAFETY NOTES:

- Select an area for assembly that is away from the reach of small children. *Some parts in this vehicle are small and can be swallowed by children, causing choking and possible internal injury; PLEASE USE CAUTION!*
- The shock fluid and greases supplied should be kept out of children's reach. *They are not intended for human consumption!*
- Exercise care when using any hand tools, sharp instruments, or power tools during construction.
- Carefully read all manufacturer's warnings and cautions for any chemicals, glues, or paints that may be used for assembly and operating purposes.

Thank you for selecting the *8IGHT-E 2.0* as your new racing buggy. The *8IGHT-E 2.0* has already distinguished itself as a top caliber racing chassis, and as you will see, we have made every effort to produce a vehicle that is not only the most competitive but also easy to maintain. The simple step-by-step assembly sequence and easily followed instructions and drawings combined with Team Losi Racing's world famous quality fitting parts will make using the 8 a most enjoyable experience.

Please take a moment to read through the following instructions. This will familiarize you with the various parts, assembly tips and descriptions as well as the tools needed. Taking an extra moment before using your vehicle will help you understand the dynamics of the *8IGHT-E 2.0* and setup tips to ensure the best possible experience.

Good luck and good racing,

Team Losi Racing

### Register your Losi Product Online:

Register your *8IGHT-E 2.0* now and be the first to find out about the latest options parts, product updates and more. Log on to [www.LOSI.com](http://www.LOSI.com) and follow the product registration link to stay connected.

Name: _____	Date: _____	Event: _____
City: _____	State: _____	Track: _____
Track Conditions	<input type="checkbox"/> Indoor <input type="checkbox"/> Tight <input type="checkbox"/> Smooth <input type="checkbox"/> Hard Packed <input type="checkbox"/> Blue Groove <input type="checkbox"/> Wet <input type="checkbox"/> Low Bite <input type="checkbox"/> High Bite	
	<input type="checkbox"/> Outdoor <input type="checkbox"/> Open <input type="checkbox"/> Rough <input type="checkbox"/> Loose/Loamy <input type="checkbox"/> Dry <input type="checkbox"/> Dusty <input type="checkbox"/> Med Bite <input type="checkbox"/> Other _____	

### Front Suspension

Toe: \_\_\_\_\_

Ride Height: \_\_\_\_\_

Camber: \_\_\_\_\_

Caster: \_\_\_\_\_

Sway Bar: \_\_\_\_\_

Piston/Oil: \_\_\_\_\_

Spring: \_\_\_\_\_

Limiter/Droop: \_\_\_\_\_

Overall Shock Length: \_\_\_\_\_

Steering Ackerman: \_\_\_\_\_

Bump Steer: \_\_\_\_\_

Camber Link: \_\_\_\_\_

Shock Location: \_\_\_\_\_

### Differentials

Front:  Standard  Smart

Spring Wire Dia: \_\_\_\_\_

Qty of Springs: \_\_\_\_\_

Ramp Plate: \_\_\_\_\_

Grease: \_\_\_\_\_

Diff Fluid: \_\_\_\_\_

Center:  Standard  Smart

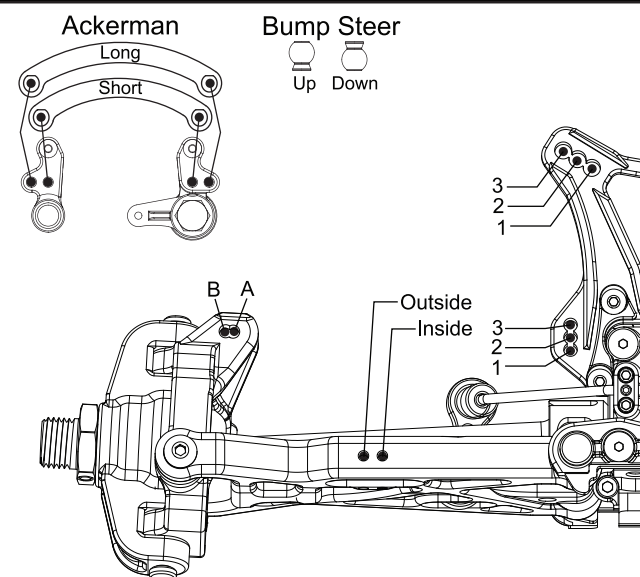
Spring Wire Dia: \_\_\_\_\_

Qty of Springs: \_\_\_\_\_

Ramp Plate: \_\_\_\_\_

Grease: \_\_\_\_\_

Diff Fluid: \_\_\_\_\_



Notes: \_\_\_\_\_

\_\_\_\_\_

\_\_\_\_\_

### Rear Suspension

Toe: \_\_\_\_\_

Anti-Squat: \_\_\_\_\_

Ride Height: \_\_\_\_\_

Camber: \_\_\_\_\_

Rear Hub Spacing: \_\_\_\_\_

Sway Bar: \_\_\_\_\_

Piston/Oil: \_\_\_\_\_

Spring: \_\_\_\_\_

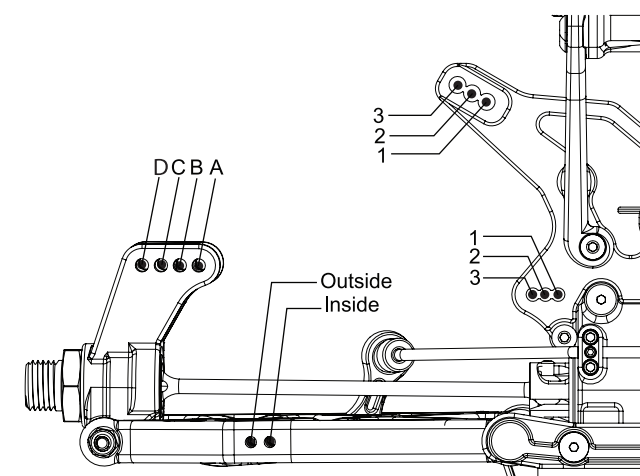
Limiter/Droop: \_\_\_\_\_

Overall Shock Length: \_\_\_\_\_

Camber Link: \_\_\_\_\_

Shock Location: \_\_\_\_\_

Rear Diff Fluid: \_\_\_\_\_



Notes: \_\_\_\_\_

\_\_\_\_\_

\_\_\_\_\_

### Power Train

Motor: \_\_\_\_\_ Battery: \_\_\_\_\_

Spur: \_\_\_\_\_

Pinion: \_\_\_\_\_

### ESC

Throttle Limit: \_\_\_\_\_

Motor Timing: \_\_\_\_\_

Drag Brake: \_\_\_\_\_

Braking %: \_\_\_\_\_

BEC Voltage: \_\_\_\_\_

Initial Acceleration: \_\_\_\_\_

Neutral Deadband: \_\_\_\_\_

### Tires

Type	Compound	Insert
Front: _____	_____	_____
Rear: _____	_____	_____
Notes: _____	_____	_____
_____	_____	_____
_____	_____	_____

<h3>Cap Head</h3> <ul style="list-style-type: none"> <li>2-56 x 1/4" (A6232)</li> <li>2-56 x 1/2" (A6254)</li> <li>4-40 x 3/8" (A6206)</li> <li>4-40 x 1/2" (A6204)</li> <li>4-40 x 5/8" (A6221)</li> <li>5-40 x 1/2" (A6240)</li> <li>5-40 x 7/8" w/ 5/8" Shoulder (A4414)</li> </ul>	<h3>Flat Head 1</h3> <ul style="list-style-type: none"> <li>3 x 8mm (A9106)</li> <li>3 x 12mm (A3500)</li> <li>5-40 x 3/8" (A6270)</li> <li>5-40 x 1/2" (A6271)</li> <li>5-40 x 5/8" (A6275)</li> <li>5-40 x 3/4" (A6272)</li> <li>5-40 x 7/8" (A6273)</li> </ul>	<h3>Flat Head 2</h3> <ul style="list-style-type: none"> <li>8-32 x 3/8" (A6264)</li> <li>8-32 x 1/2" (A6262)</li> <li>4mm x 12mm (A6259)</li> <li>5-40 x 1-7/8" (A6273)</li> </ul>	<h3>Button Head</h3> <ul style="list-style-type: none"> <li>2-56 x 1/4" (A6255)</li> <li>4-40 x 1/4" (A6234)</li> <li>4-40 x 1/2" (A6256)</li> <li>5-40 x 3/8" (A6277)</li> <li>5-40 x 1/2" (A6278)</li> <li>5-40 x 20mm (A6281)</li> <li>5-40 x 3/4" (A6279)</li> <li>5-40 x 1" (A6280)</li> <li>8-32 x 3/4" (A6263)</li> </ul>
<h3>Set</h3> <ul style="list-style-type: none"> <li>F 5-40 x 1/8" (A6228)</li> <li>C 4-40 x 1/8" (A6227)</li> <li>C 5-40 x 3/16" (A6299)</li> <li>C 8-32 x 1/8" (A6298)</li> <li>F 5-40 x 1/8" (A6297)</li> <li>F 8-32 x 1/8" (A6296)</li> <li>O10-32 x 3/8" (A6295)</li> <li>5-40 x 22mm (A6045)</li> </ul>	<h3>Ball Bearings 1</h3> <ul style="list-style-type: none"> <li>5x10x4mm (A6949)</li> <li>6x10x3mm (A6946)</li> <li>5x11x4mm (A6947)</li> <li>F 5x11x4mm (A6948)</li> </ul>	<h3>Ball Bearings 2</h3> <ul style="list-style-type: none"> <li>5x13x4mm (A6949)</li> <li>8x14x4mm (A6945)</li> <li>1/2" x 3/4" (A6953)</li> </ul>	<h3>Pins</h3> <ul style="list-style-type: none"> <li>2.5 x 14mm (A3518)</li> <li>2.5 x 12.37mm (A3518)</li> <li>3 x 17mm (A3518)</li> <li>2.5 x 12.8mm (A3518)</li> <li>4 x 66mm (A6500)</li> <li>3.5 x 53mm (A6503)</li> </ul>
<h3>Washers</h3> <ul style="list-style-type: none"> <li>Ball Stud (A6215)</li> <li>#4 x .030" (A6350)</li> <li>.250 x .094 x .020" (A9166)</li> </ul>	<h3>Shims</h3> <ul style="list-style-type: none"> <li>5x7x.2mm (A6356)</li> <li>6x11x.2mm (A3501)</li> <li>14x17x.1mm (A4452)</li> <li>14x17x.25mm (A4452)</li> </ul>	<h3>Retaining Clips</h3> <ul style="list-style-type: none"> <li>5mm E-clip (A6109)</li> <li>Body Clip (A8200)</li> </ul>	<h3>Nuts (Lock/Plain)</h3> <ul style="list-style-type: none"> <li>#4-40 (Mini) (A6306)</li> <li>#5-40 (A6302)</li> <li>#8-32 (A6311)</li> </ul>

## DETAIL ICON REFERENCE KEY

1 These numbers are used to identify the critical order in which assembly must occur. \*Note: They will not call out every stage of the assembly process.

Apply Losi-Lok™	Apply High Pressure Black Grease	Apply CA Glue	Degrease with Motor Spray	Fill With Silicone Oil	Pre-Tap
Pay Special Attention	Cut/Trim	Ensure Free Movement	Ensure Free Rotation	Ensure Proper Orientation	Push Firm
Side Shown	Assemble Other Side the Same	Repeat/Build Multiple	Screw Partially	<b>DO NOT</b> Over-Tighten/ Snug Tight	Tighten

## 8IGHT-E 2.0 COMPLETED KIT SPECIFICATIONS

*\*All measurements taken at ride height (32mm).*

Overall Chassis Length: 16.35" (415mm)	Wheelbase: 12.71"-12.87" (323-327mm)	*Front Track Width: 12.13" (308mm)
Overall Length w/Tires: 19.5" (497mm)	*Overall Height: 6.625" (168mm)	*Rear Track Width: 12.13" (308mm)

Note: Final vehicle weight will vary depending on accessories used.

Table 1: 8IGHT-E 2.0 Completed Vehicle Specifications.

### Vehicle/Manual Organization:

The vehicle is composed of different steps marked A through H. Each step contains all of the parts necessary to complete a particular section of the vehicle. Some of these steps have sub-assembly steps within them. It is helpful to read through the instructions for an entire step prior to working on your vehicle. Next to each of the step numbers is a check box. At the completion of each step, place a check in this box so that if you must stop and come back to the assembly, you will be able to pick up where you left off.

For your convenience, an actual-size Hardware Identification Guide is included as a fold-out page at the back of this manual. Hardware that is not easily differentiable in each step is called out with an icon which contains a small picture of the part genre (referenced on the Hardware Identification Guide), the quantity of that part required for what is shown in the step, and the size or name of that part. To check a part, hold it against the silhouette until the correct part is identified. Associated with each of these parts, in the Hardware Identification Guide, is a LOSA-Number which is used when ordering replacement parts for your 8IGHT-E 2.0. In some cases, extra hardware has been supplied for parts that may be easy to lose.



Components used in each step are identified by their relative LOSA-Number and the component's name. With the exception of a few parts, these are not referenced in the Hardware Identification Guide.

The molded parts in Team Losi Racing vehicles are manufactured to demanding tolerances. When screws are tightened to the point of being snug, the parts are held firmly in place. For this reason, it is very important that screws not be overtightened in any of the plastic parts.

In some steps there will be a filled black circle with a white number. These indicate the specific order by which assembly must occur. In cases where steps are repeated (front/rear or left/right) these numbers may be omitted. Please note that these numbers will not call out every sub-step required for the step's assembly procedures, they will only highlight the critical order required for assembly.

In each step, there are specific "Detail Icons" (shaped like a stop sign) that call out critical precautions or assembly tips for the process. There is a reference key that describes the meaning of each of the icons located on the fold-out Hardware Identification Guide at the back of this manual.

To ensure that parts are not lost during construction, it is recommended that you work over a towel or mat to prevent parts from rolling away.

### TOOLS REQUIRED FOR ASSEMBLY

Team Losi Racing has supplied all necessary Allen wrenches and special wrenches that are needed for assembly and adjustments. The following common tools will also be required: needle-nose pliers, regular pliers, hobby knife, scissors or other body cutting/trimming tools, and a soldering iron may be necessary for radio installation. 3/16", 1/4", 5/16" and 11/32" nut drivers are optional.

### RADIO/ELECTRONICS

A suggested radio layout is provided in this manual. Your high-performance RC center should be consulted regarding specific questions pertaining to radio/electrical equipment.

### HARDWARE IDENTIFICATION

When in question, use the Hardware Identification Guide at the back of this manual.

- For screws, the prefix number designates the thread size and number of threads per inch (e.g., 4-40 is a #4 size thread with 40 threads per inch). The second number, or fraction, designates the length of the screw. For cap head and button head screws, this number refers to the length of the threaded portion of the screw. For flat head and setscrews, this number refers to the overall length of the screw.
- Bearings and bushings are referenced by the inside diameter (I.D.) x outside diameter (O.D.).
- Shafts and pins are designated by type (Roll, Solid) and referenced by diameter x length.
- Washers, Spacers and Shims are described by inside diameter or the screw size that will pass through the inside diameter x the thickness or by their designated application (e.g., Ball Stud washer is primarily used under a Ball Stud).
- Retaining Clips are sized by the shaft diameter that they attach to or by type (Body). The Hardware Icon associated with E/C-clips only designates the part genre of clips, not the actual part.
- Nuts come in four types, Non-Flanged, Flanged (F), Plain and Locking (L) (designated on the Hardware Icons). The prefix number designates the thread size and number of threads per inch. The second number, or fraction, designates the size of the hex. For example, L 4-40 x 1/4" designates a locknut that will thread onto a 4-40 screw using a 1/4" nut driver.
- Setscrews come in three types, Cup (C), Flat (F) and Oval (O) (designated on the hardware Icons). The prefix number designates the thread size and number of thread per inch. The second number, or fraction, designates the length of the threaded portion of the screw.

# TABLE OF CONTENTS

## SECTIONS

1. INTRODUCTION.....	i
Vehicle/Manual Organization .....	i
Important Safety Notes .....	i
Tools Required for Assembly.....	ii
Radio/Electronics .....	ii
Hardware Identification .....	ii
2. Step A: Steering Assembly .....	1-2
3. Step B: Front Clip .....	3-8
4. Step C: Center Transmission.....	9-11
5. Step D: Rear Clip .....	12-17

6. Step E: Shocks .....	18-20
7. Step F: Radio Tray .....	21-24
8. Step G: Tire and Wheel Installation .....	25-26
9. Checklist Before Your First Run .....	27
10. Setup Guide .....	28-29
11. Warranty Information.....	30-31
12. Blank 8IGHT-E 2.0 Setup Sheet .....	32
13. Hardware Identification Guide.....	33
14. Filled-out 8IGHT-E 2.0 Vehicle Setup Sheet.....	34

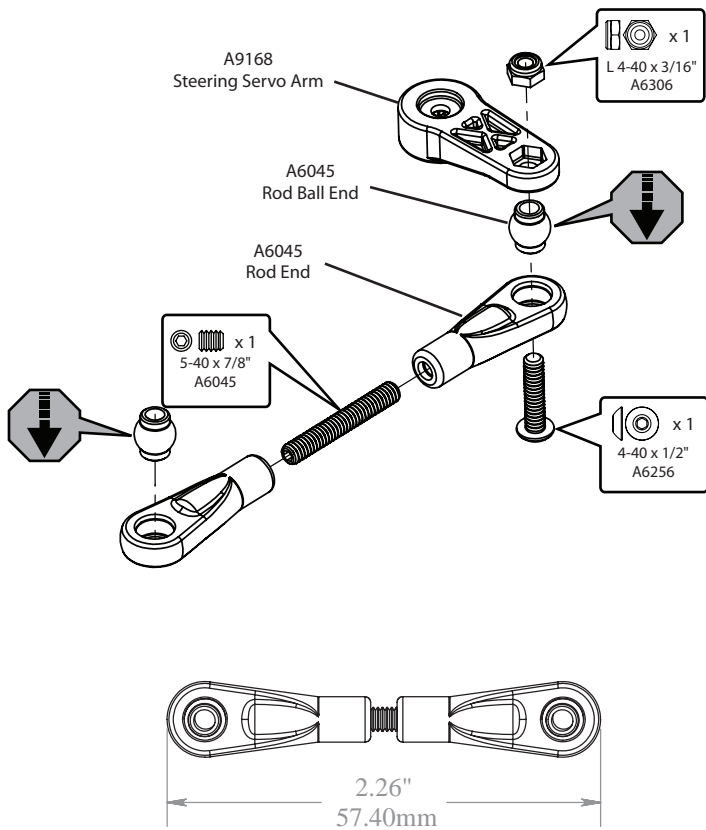
## TABLES

Table 1: 8IGHT-E 2.0 Completed Vehicle Specifications	ii
Table 2: Servo Installation .....	21

Team Losi Racing is continually changing and improving designs; therefore, the actual part may appear slightly different than the illustrated part. Illustrations of parts and assemblies may be slightly distorted to enhance pertinent details.

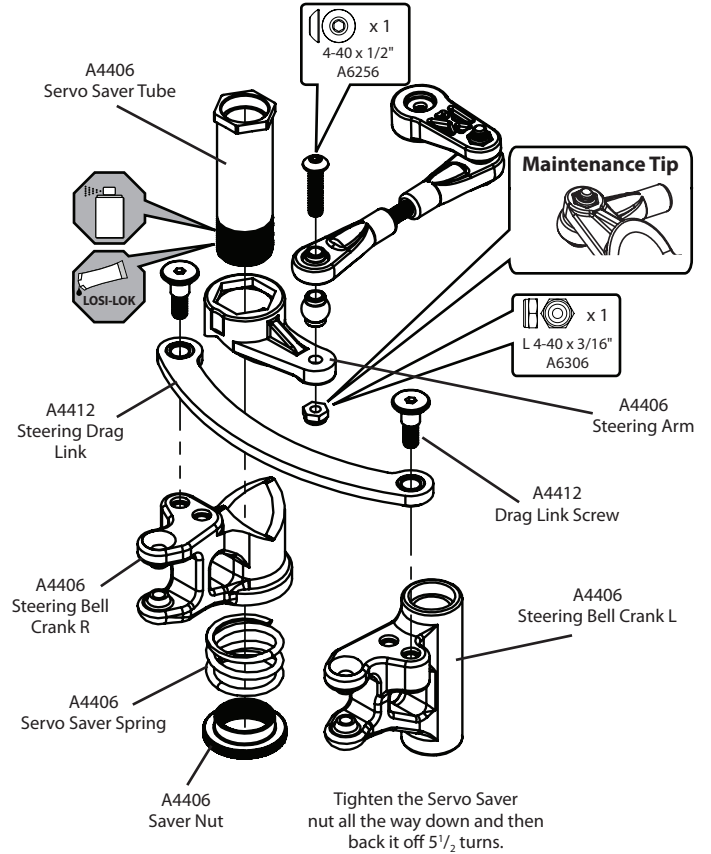
**STEP A-01**

**Steering Link Assembly**



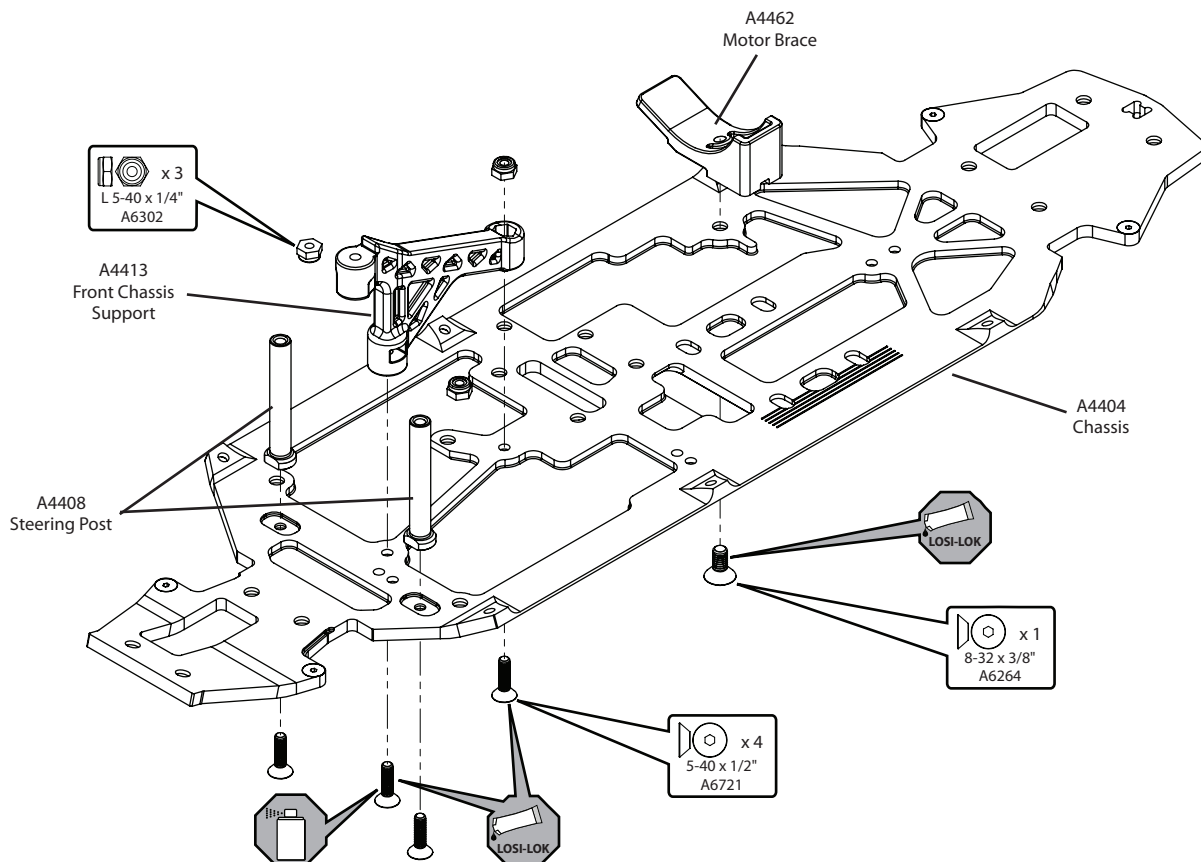
**STEP A-02**

**Servo Saver Assembly**



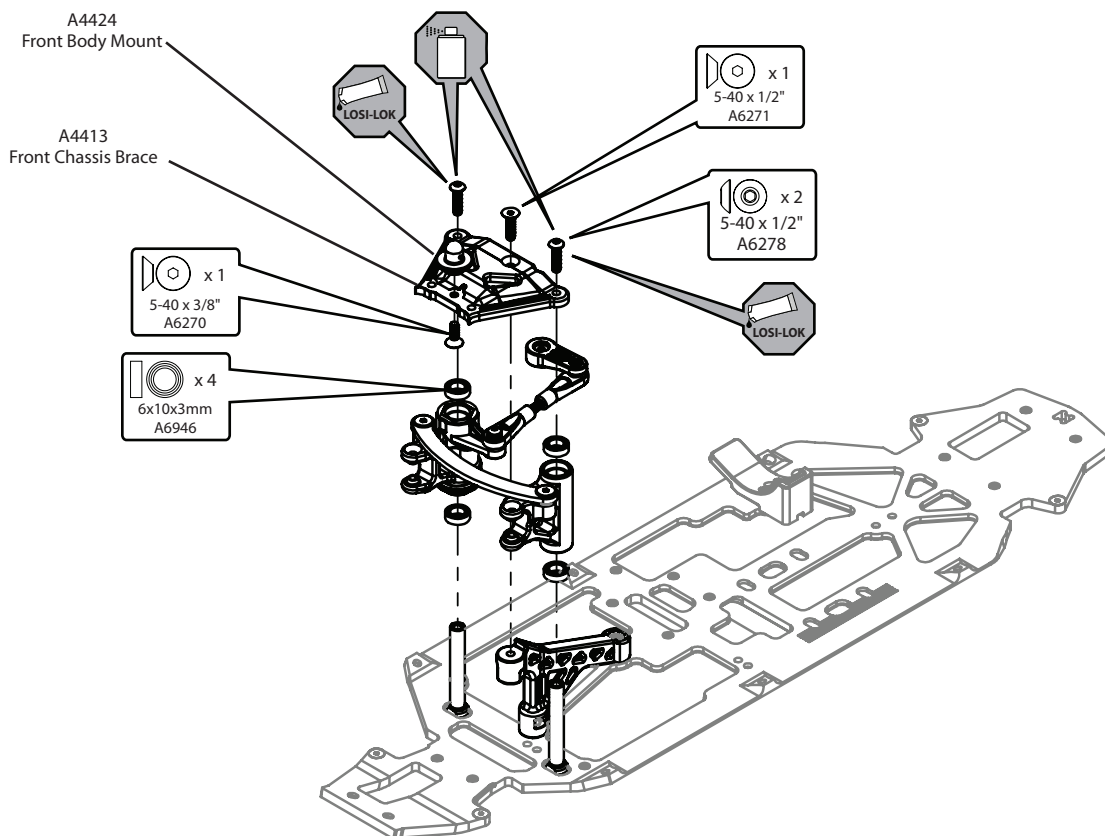
**STEP A-03**

**Chassis and Motor Brace Assembly**



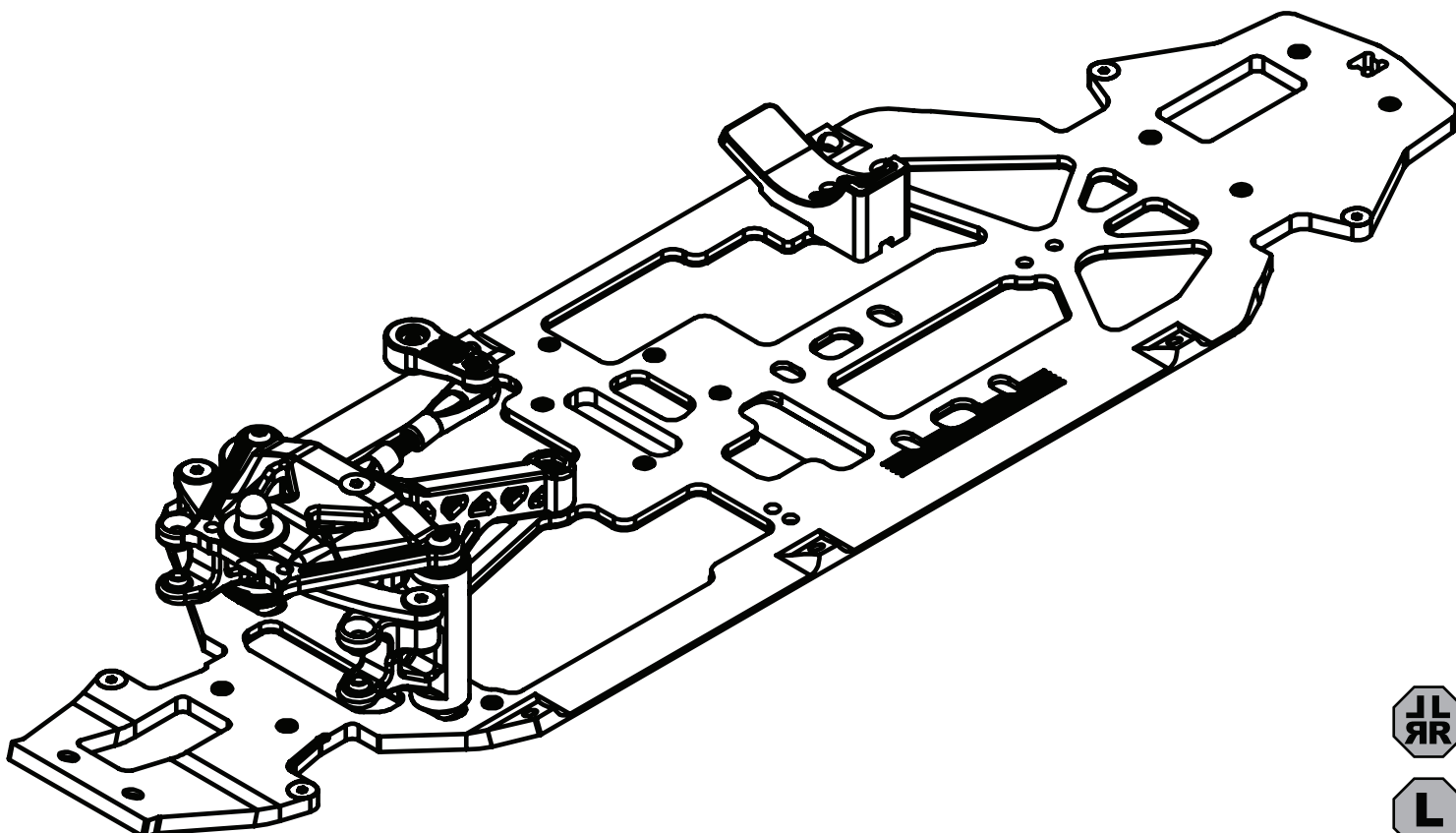
**STEP A-04**

*Steering/Top Plate Assembly*



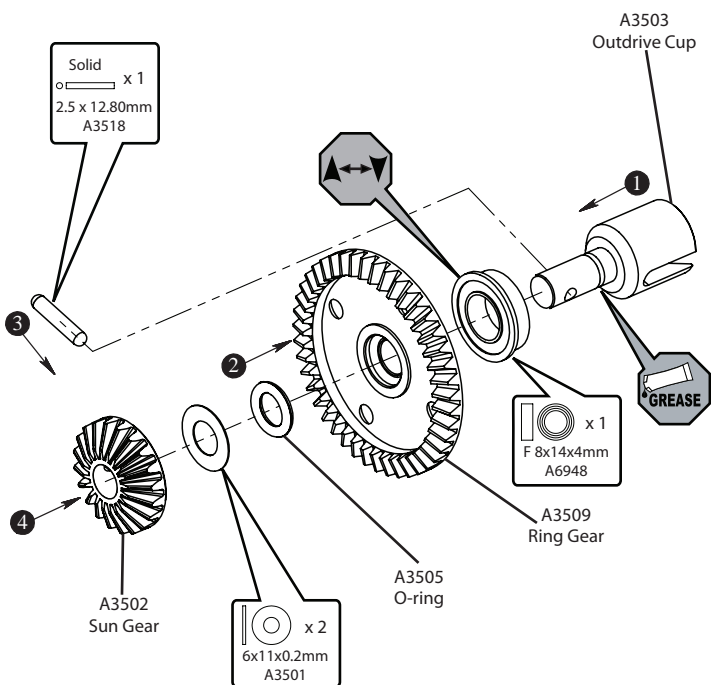
**STEP A-05**

*Completed Steering Assembly*



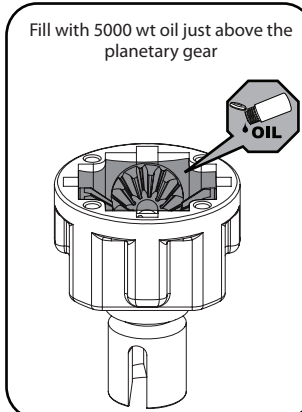
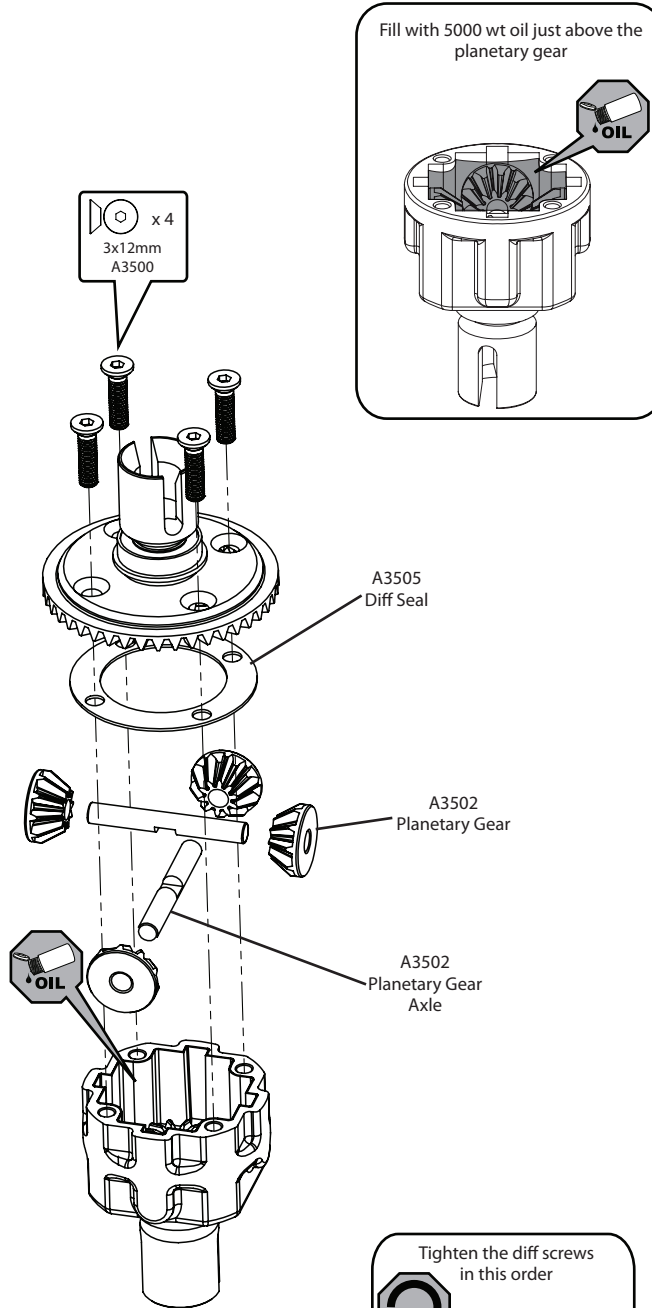
**STEP B-01**

**Ring Gear Assembly**



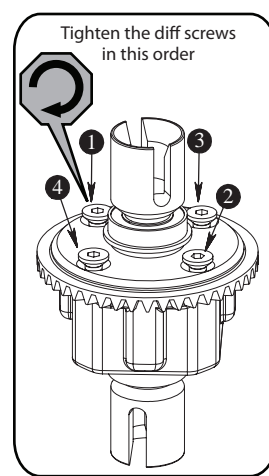
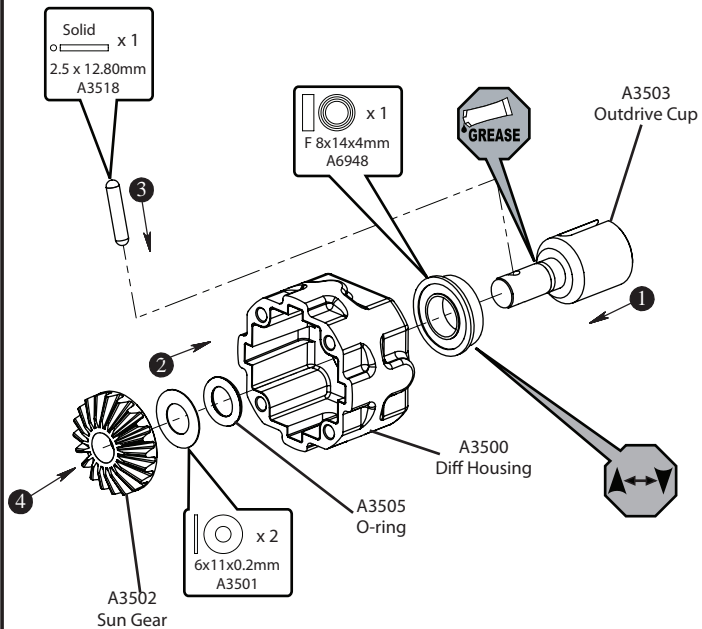
**STEP B-03**

**Complete Diff Assembly**



**STEP B-02**

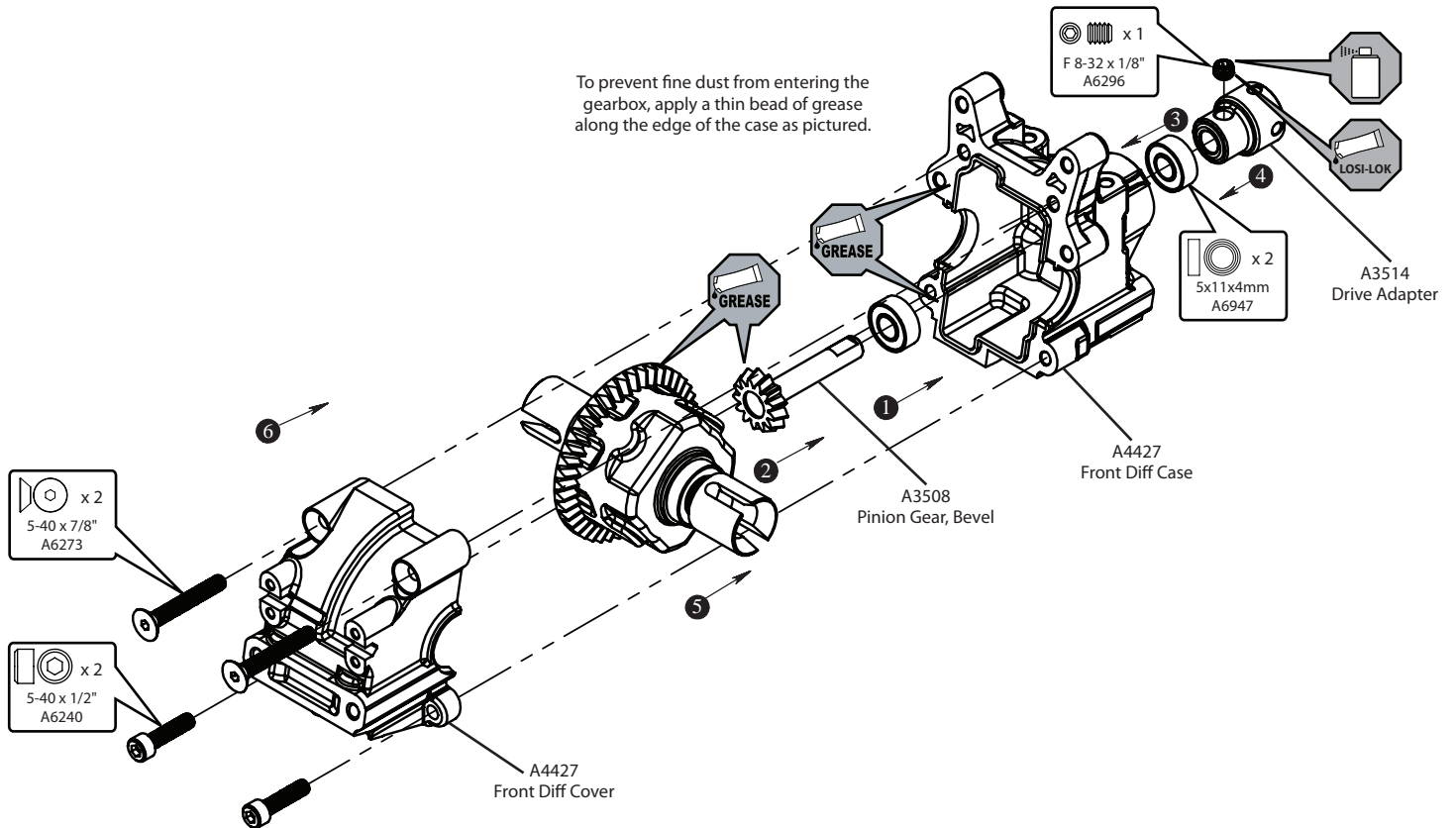
**Diff Case Assembly**



**STEP B-04**

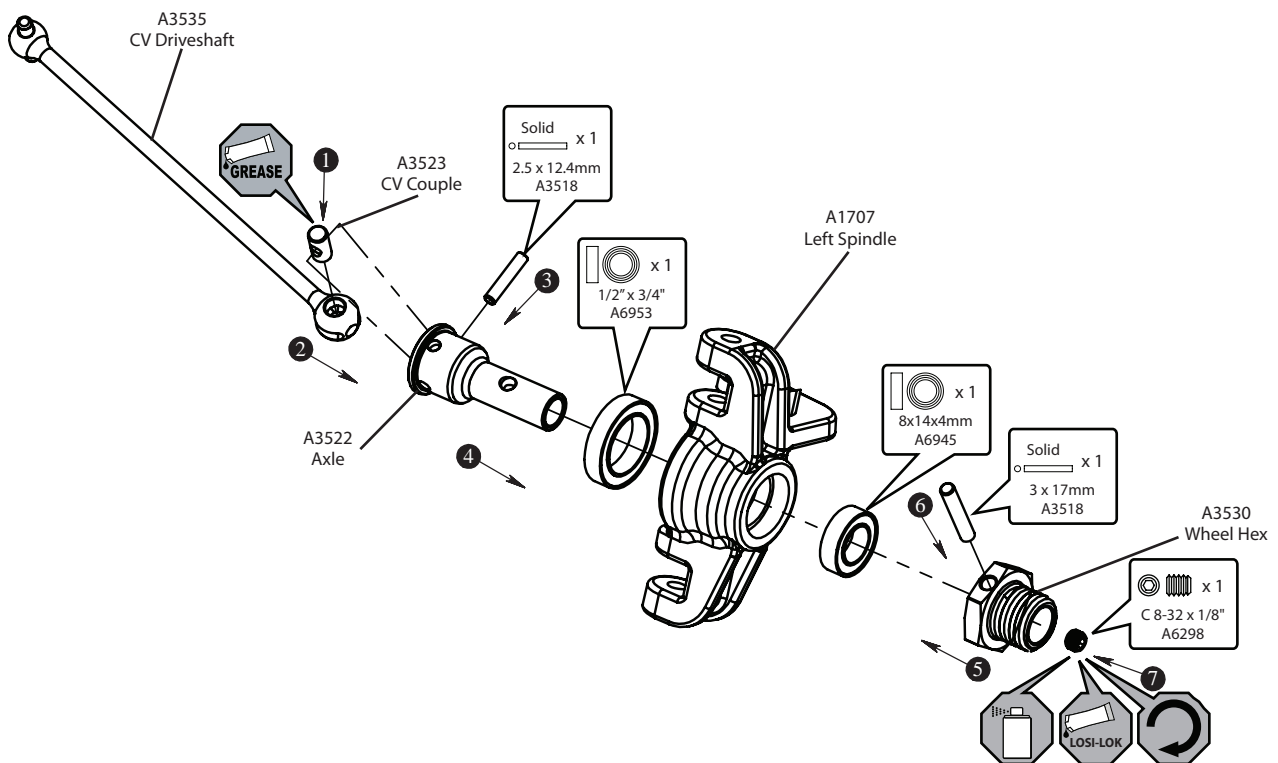
**Front Diff Installation**

To prevent fine dust from entering the gearbox, apply a thin bead of grease along the edge of the case as pictured.



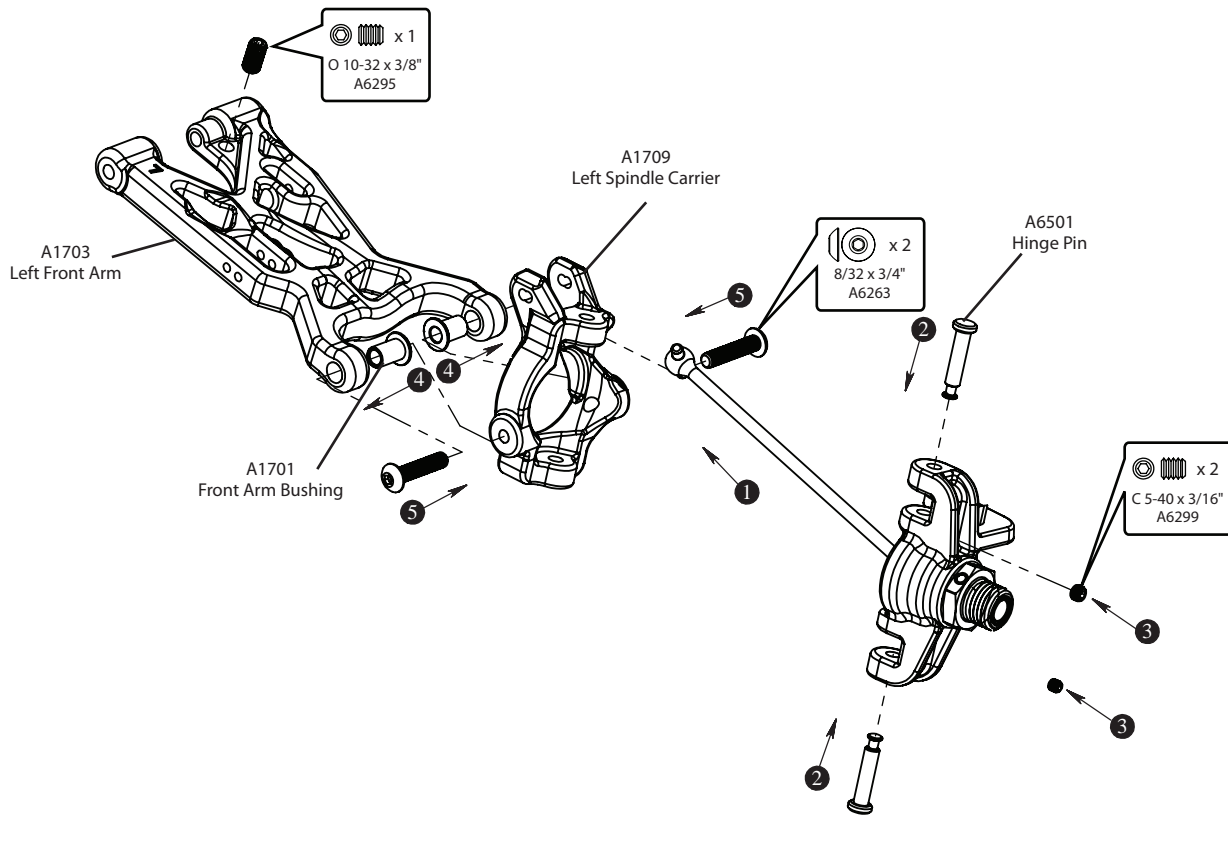
**STEP B-05**

**Front Spindle & CV Assembly**



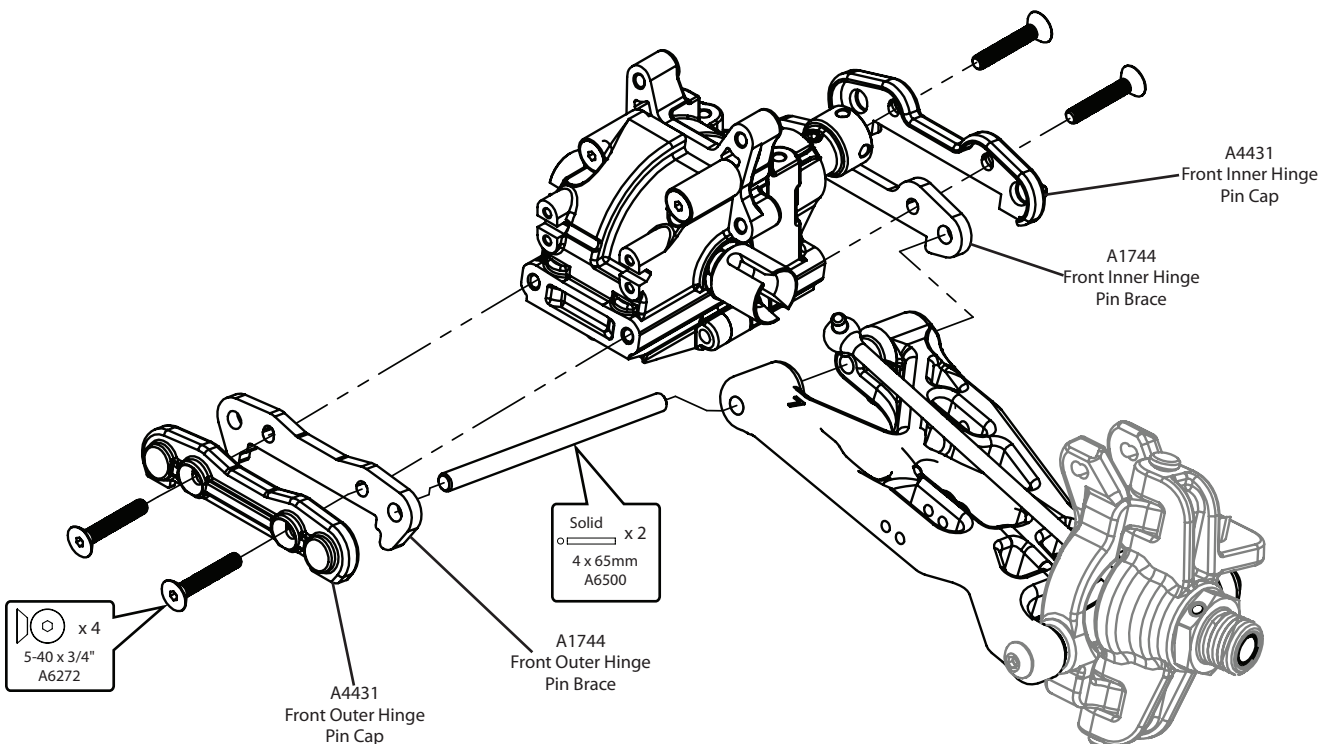
**STEP B-06**

*Spindle/Carrier Assembly*



**STEP B-07**

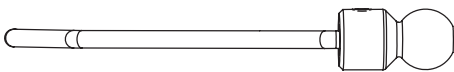
*Front Suspension Arms Assembly*



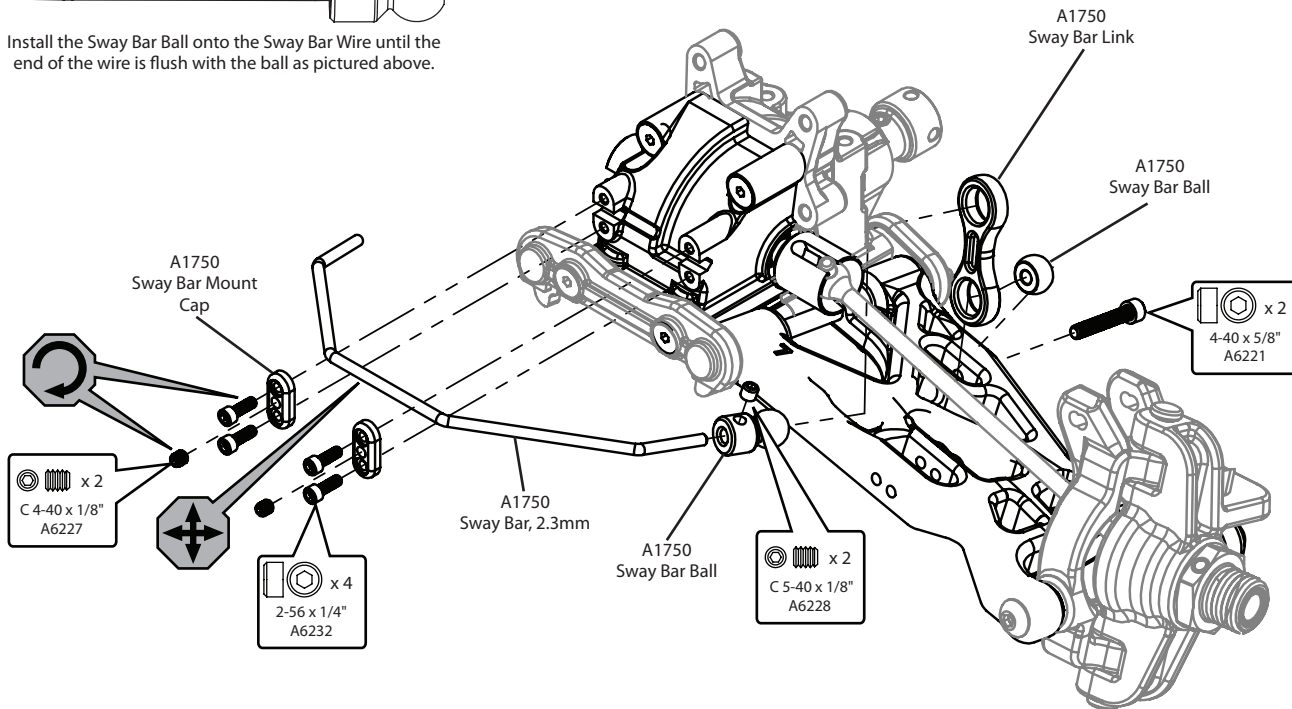


**STEP B-08**

**Sway Bar Assembly**

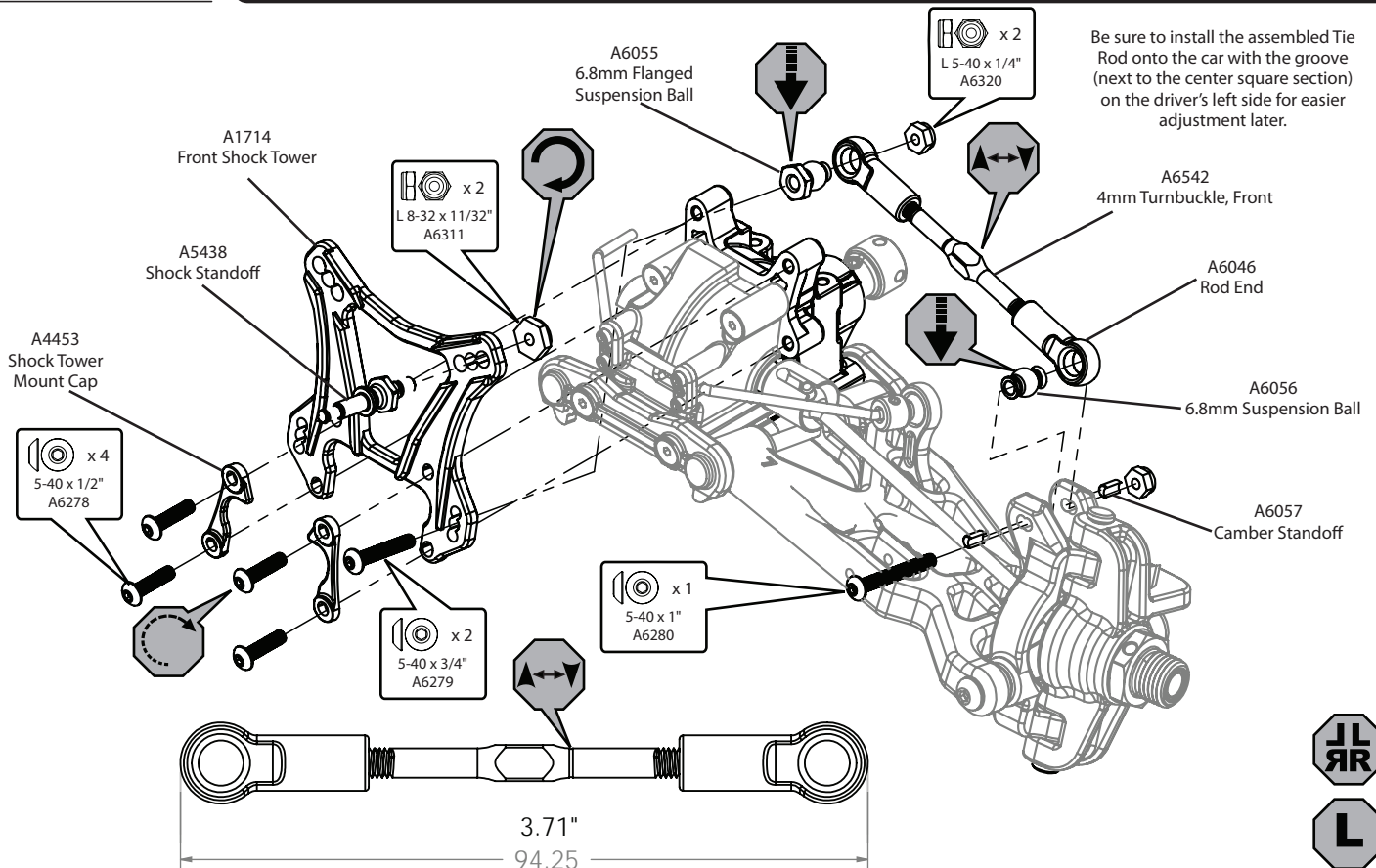


Install the Sway Bar Ball onto the Sway Bar Wire until the end of the wire is flush with the ball as pictured above.



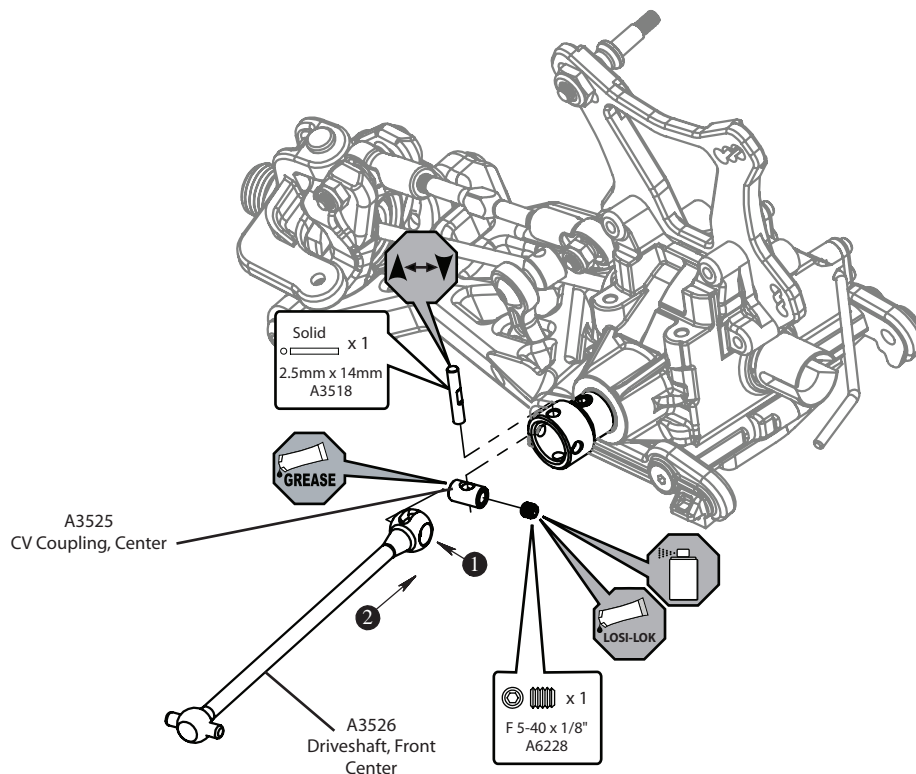
**STEP B-09**

**Tie Rod/Shock Tower Assembly**



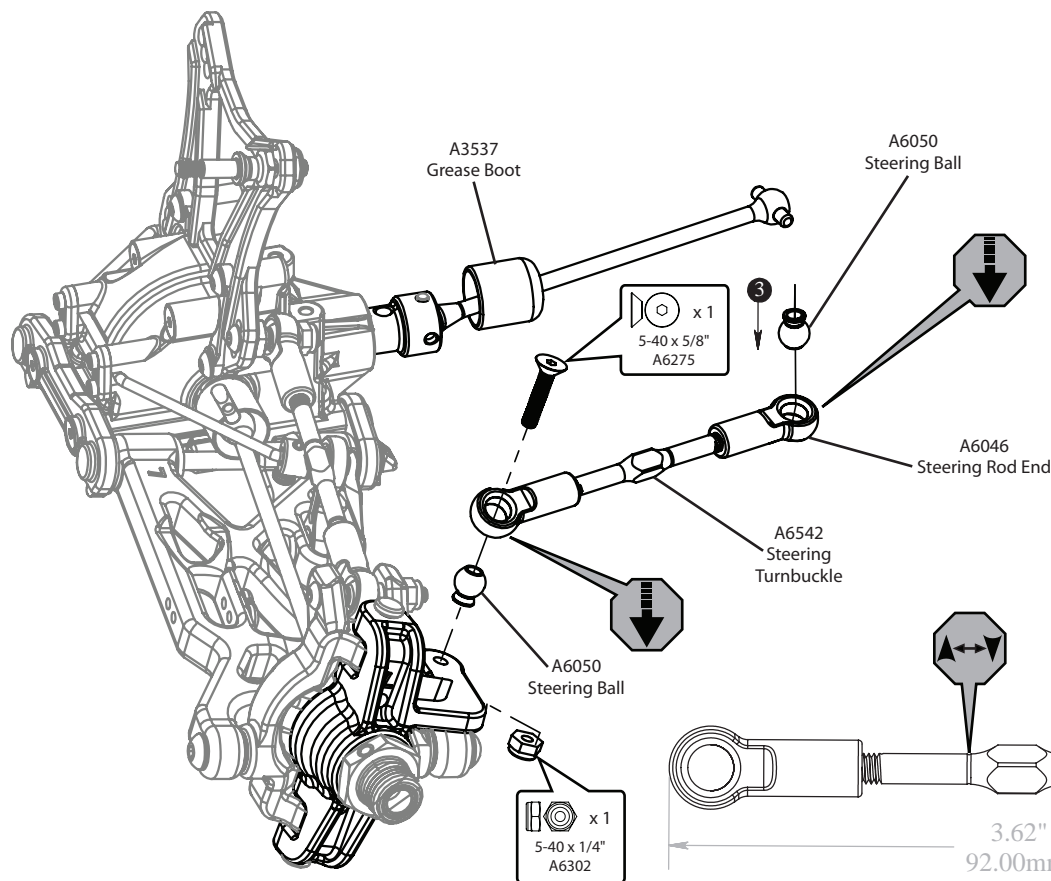
**STEP B-10**

*Center CV Assembly*



**STEP B-11**

*Steering Rod Assembly*

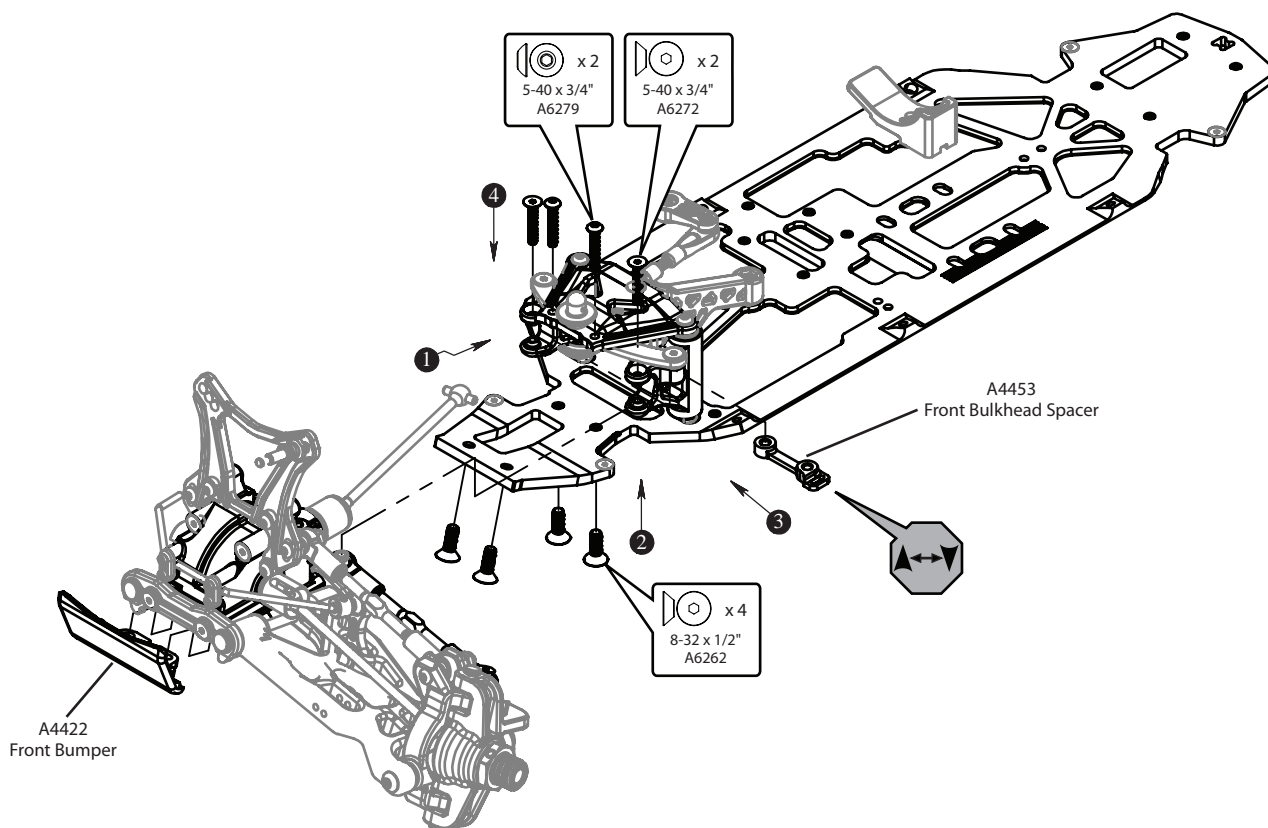


Be sure to install the assembled Tie Rod onto the car with the groove (next to the center square section) on the driver's left side for easier adjustment later.



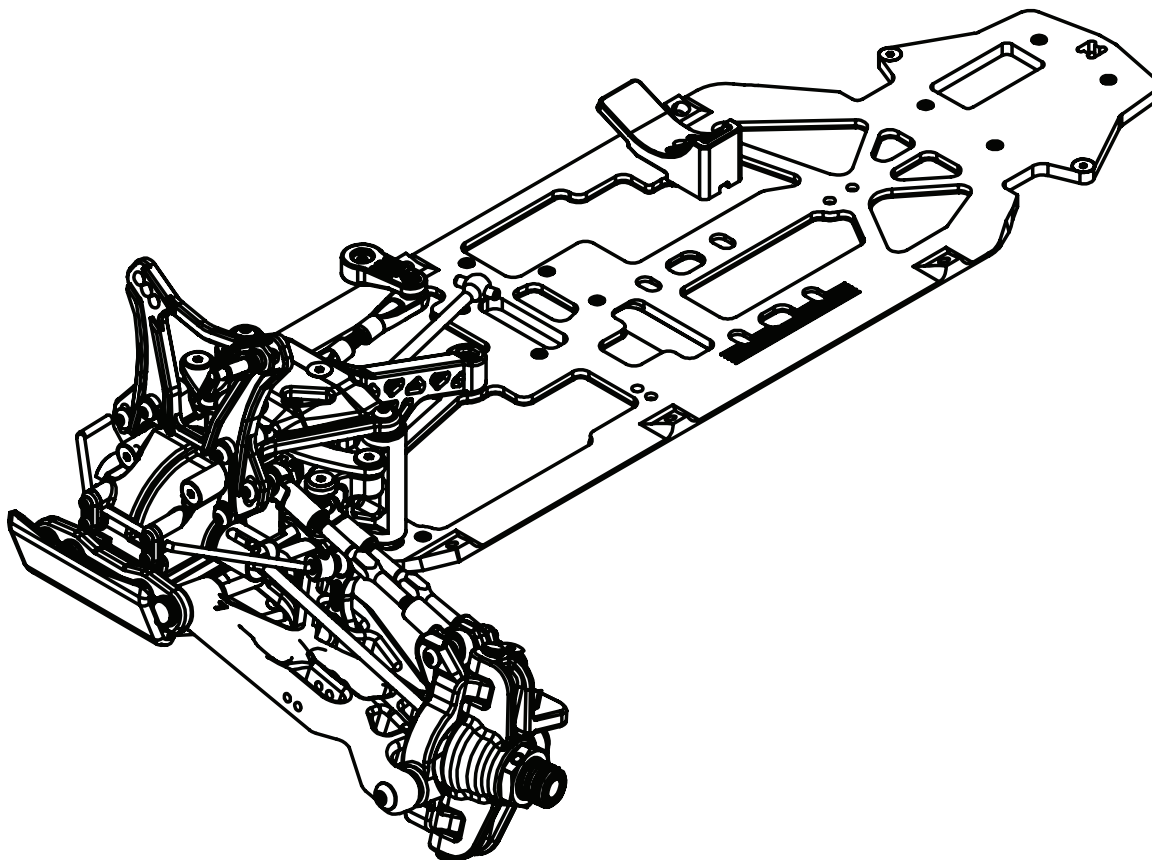
**STEP B-12**

*Front Clip Assembly*



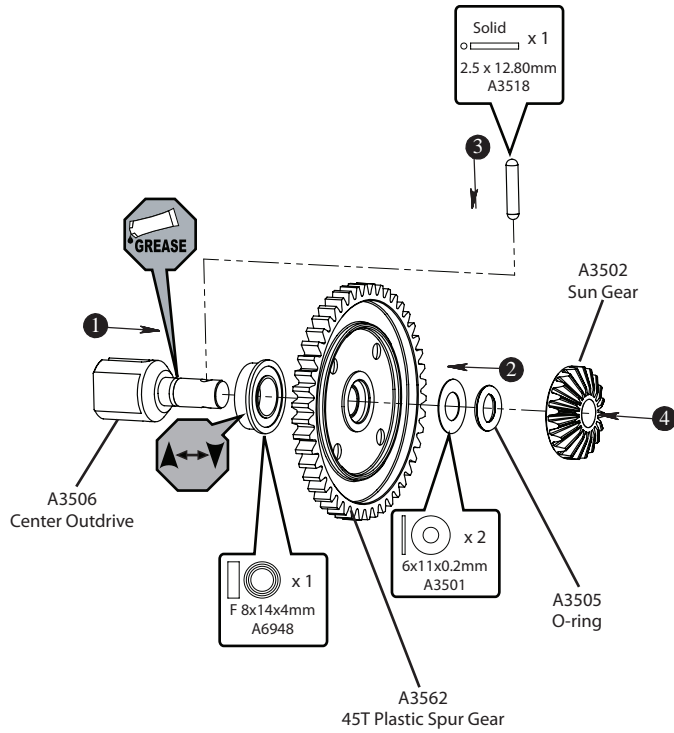
**STEP B-13**

*Completed Front Assembly*



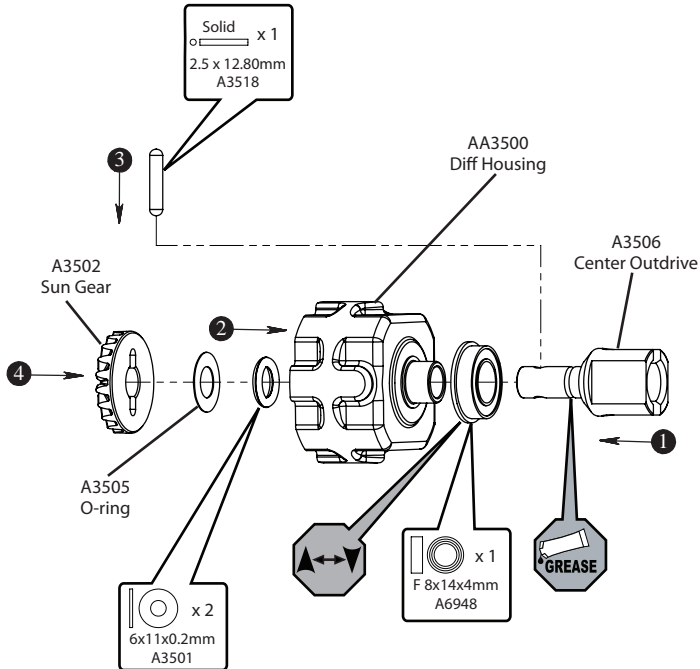
**STEP C-01**

**Ring Gear Assembly**



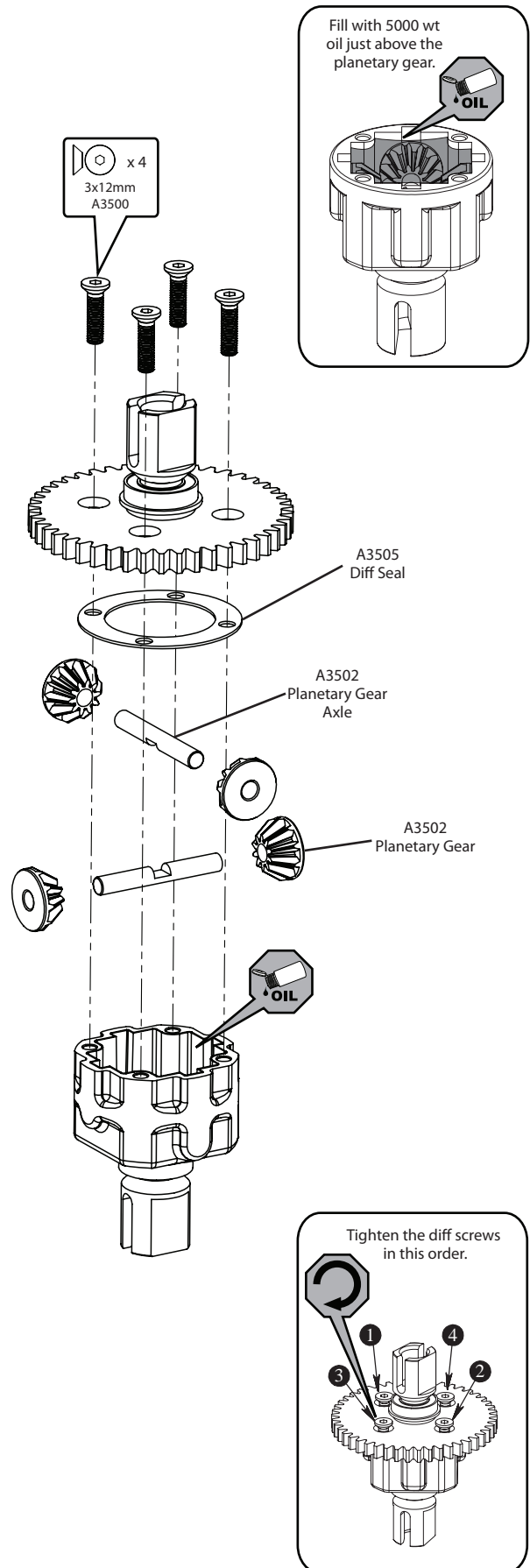
**STEP C-02**

**Diff Case Assembly**



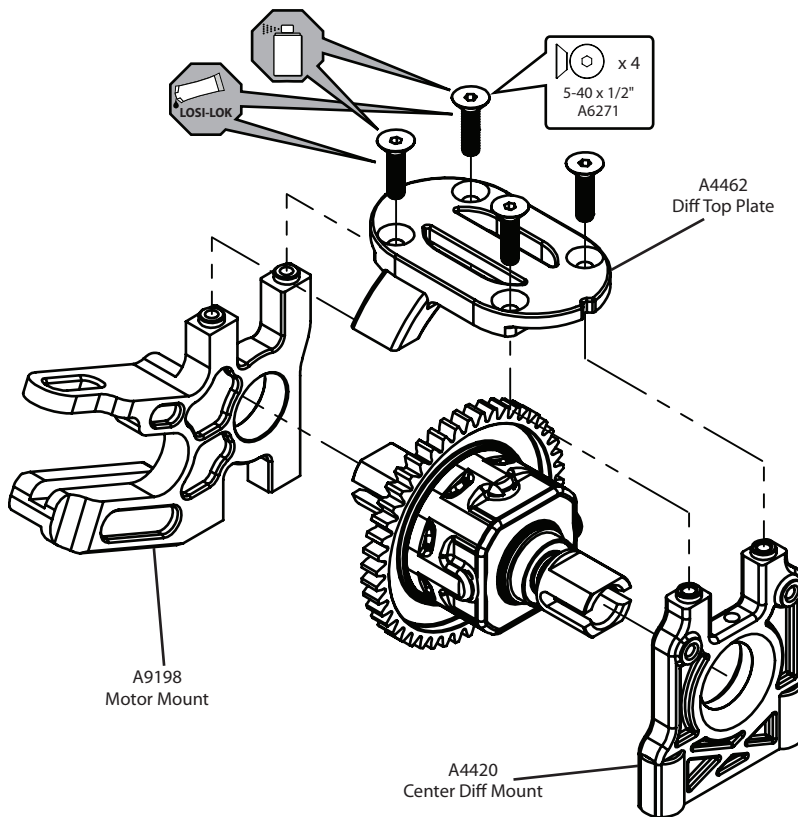
**STEP C-03**

**Complete Diff Assembly**



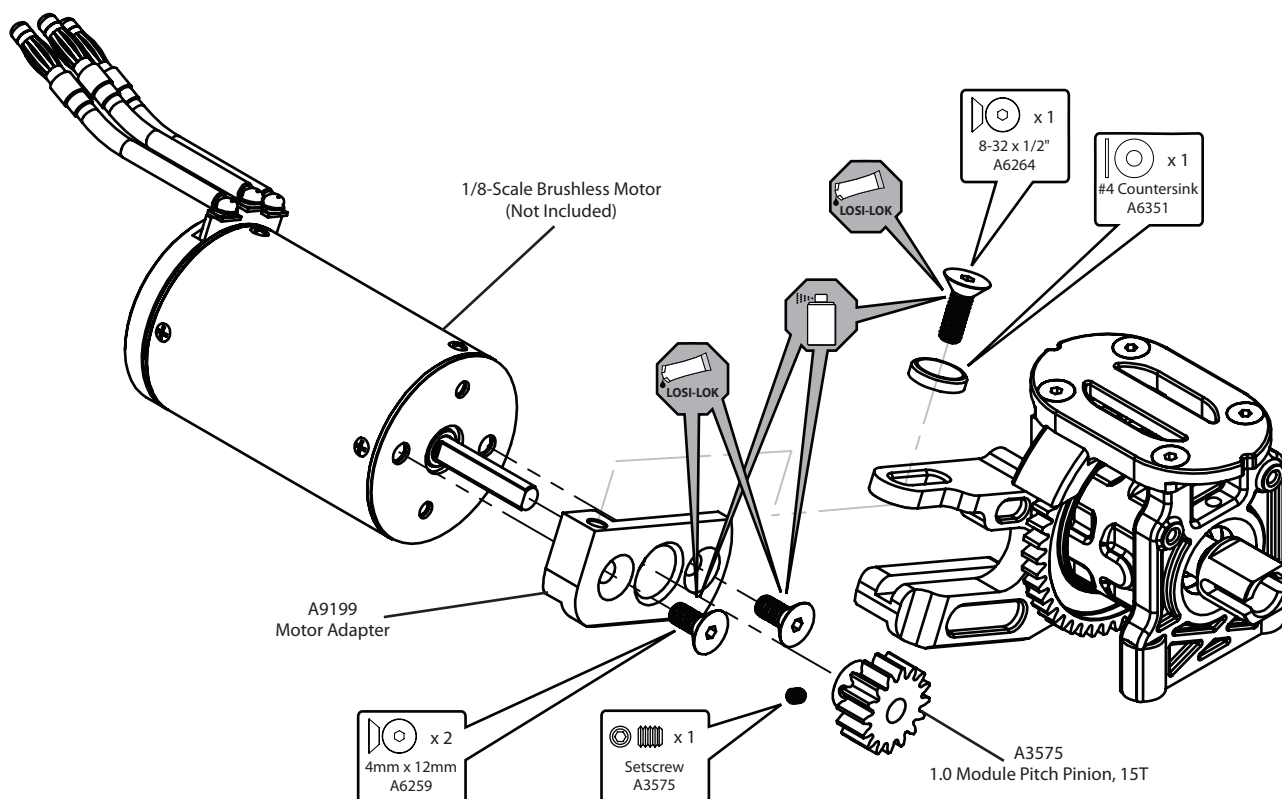
**STEP C-04**

*Center Motor Mount Assembly*



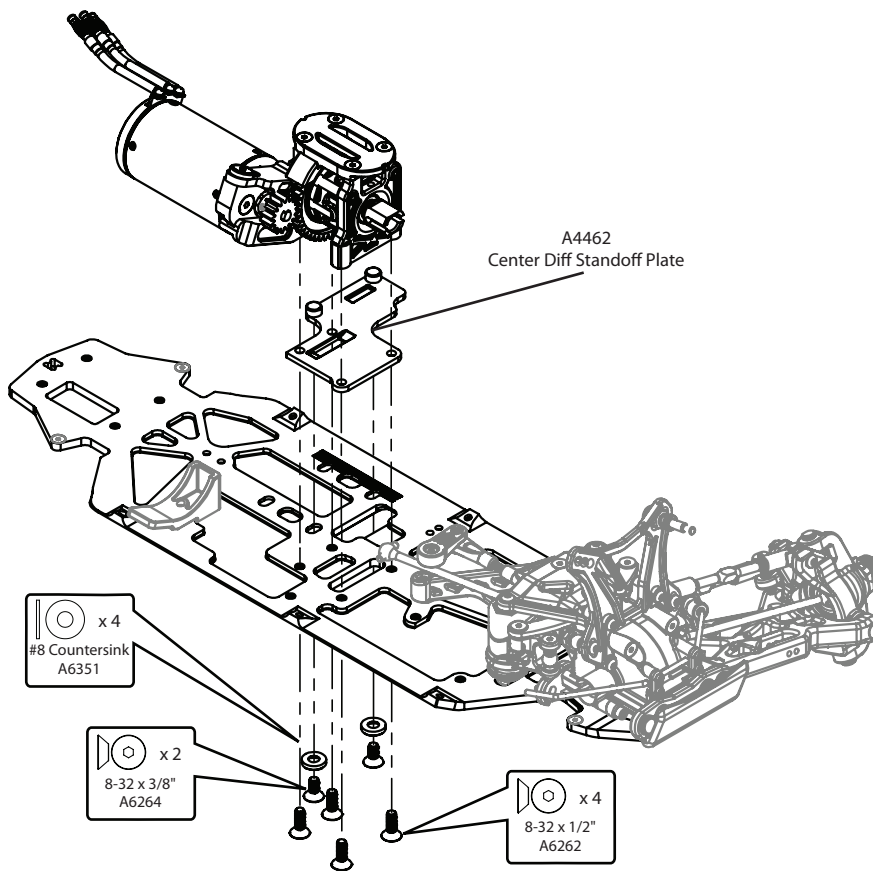
**STEP C-05**

*Motor Installation*



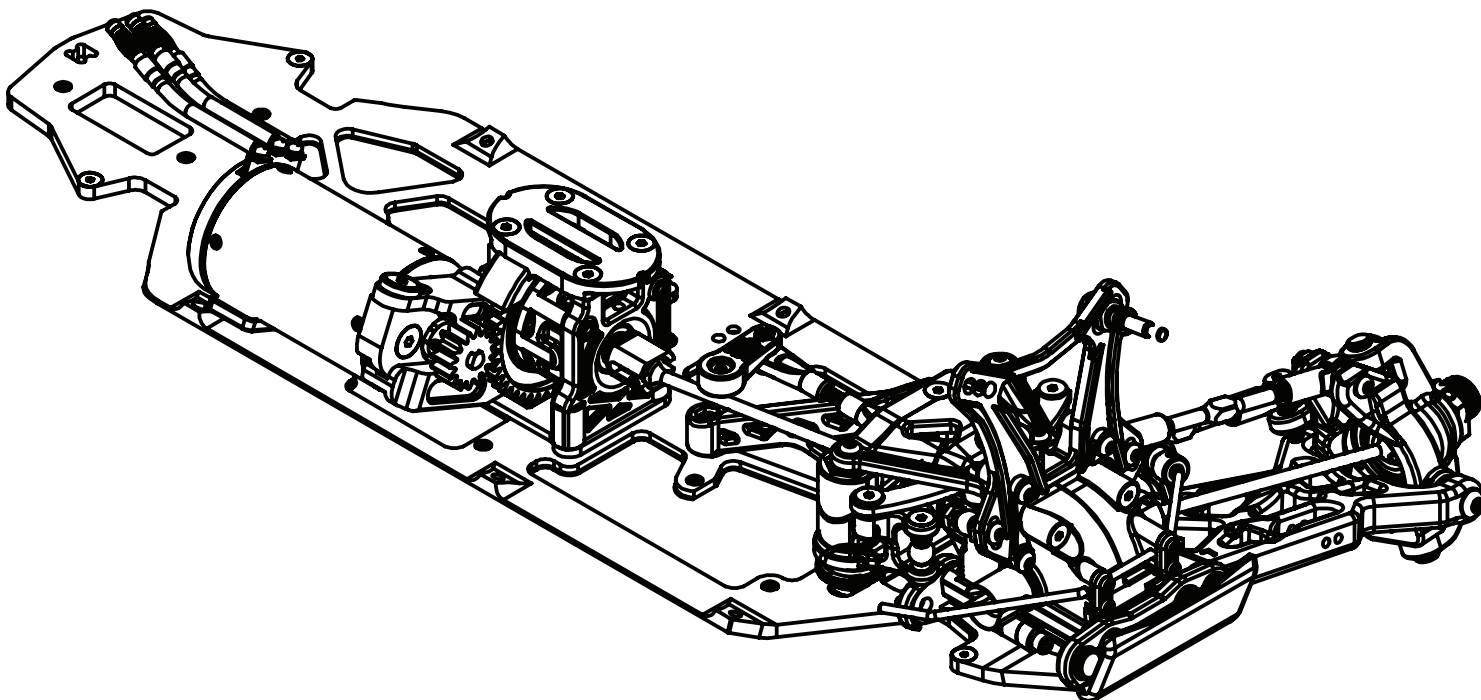
**STEP C-06**

*Center Differential Installation*



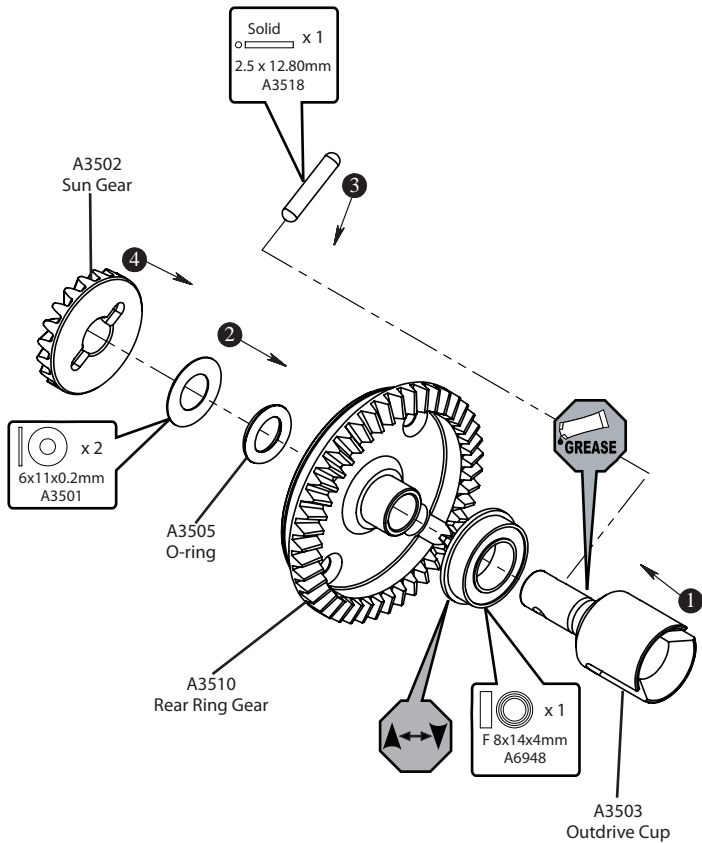
**STEP C-07**

*Completed Center Diff Assembly*



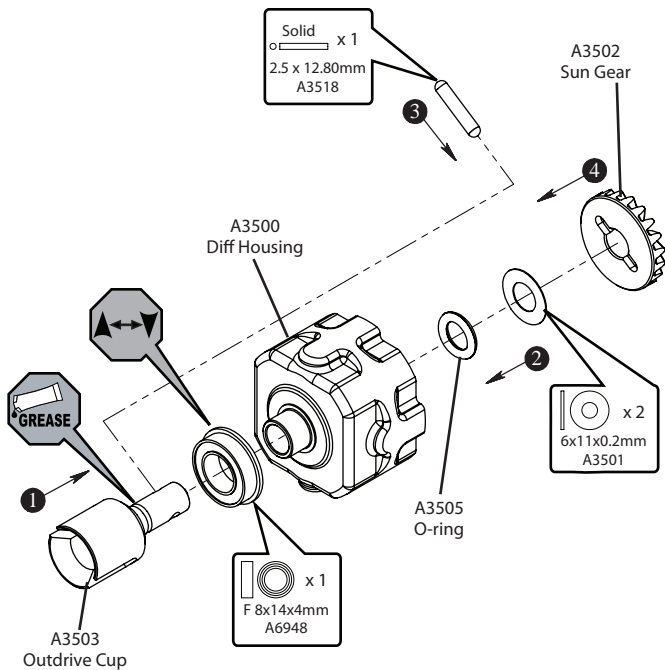
**STEP D-01**

**Ring Gear Assembly**



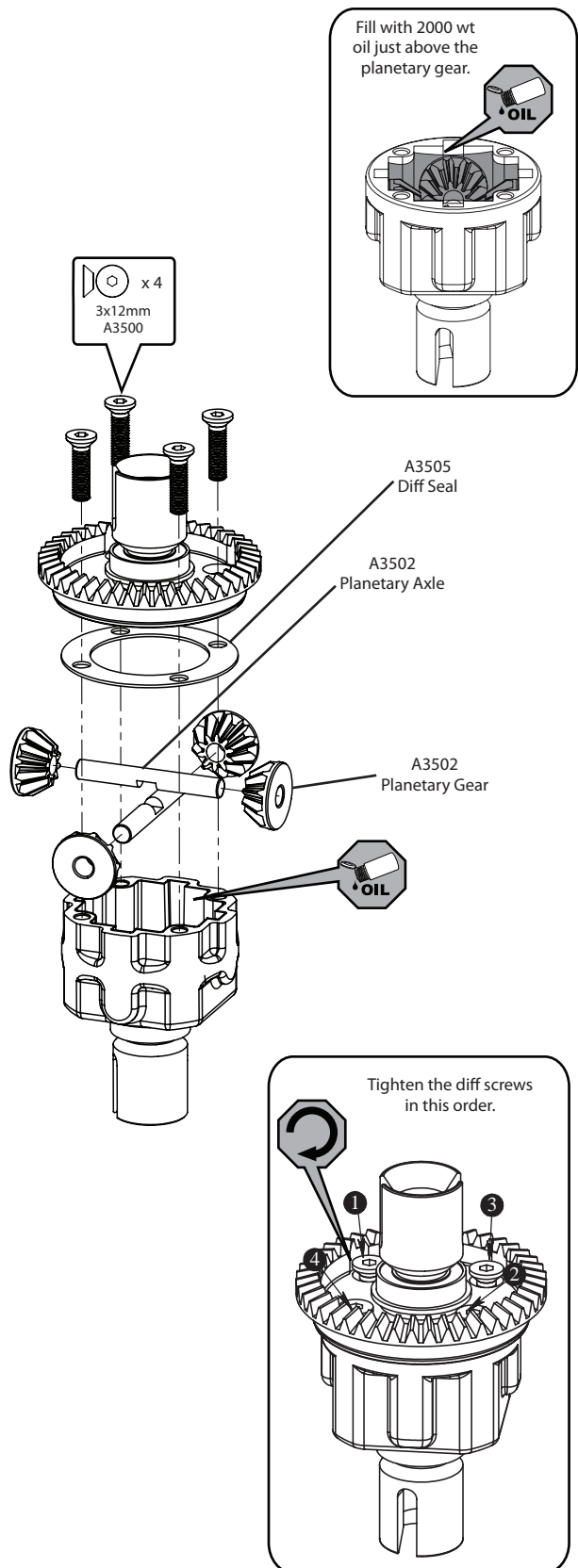
**STEP D-02**

**Diff Case Assembly**



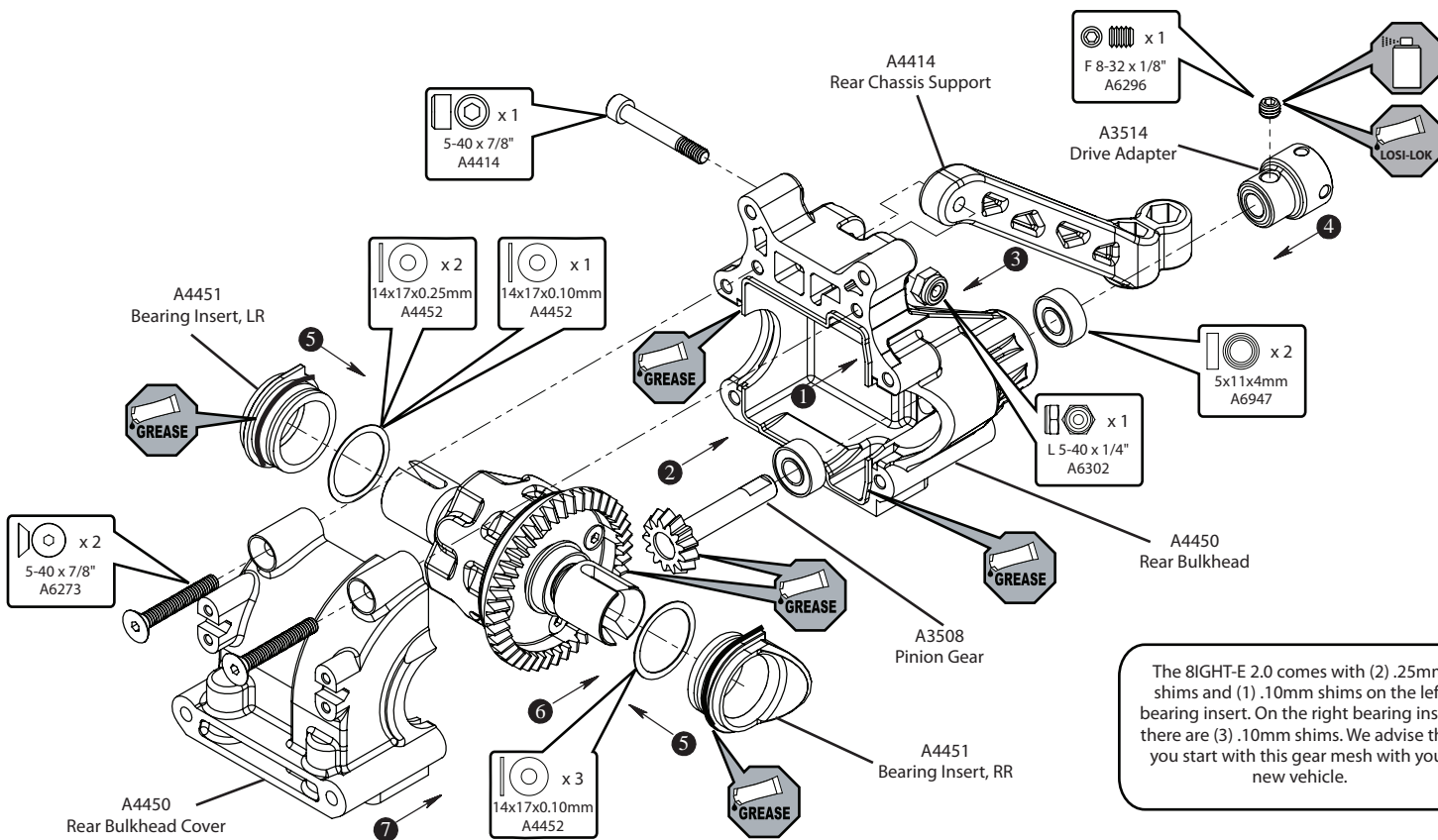
**STEP D-03**

**Complete Diff Assembly**



### STEP D-04

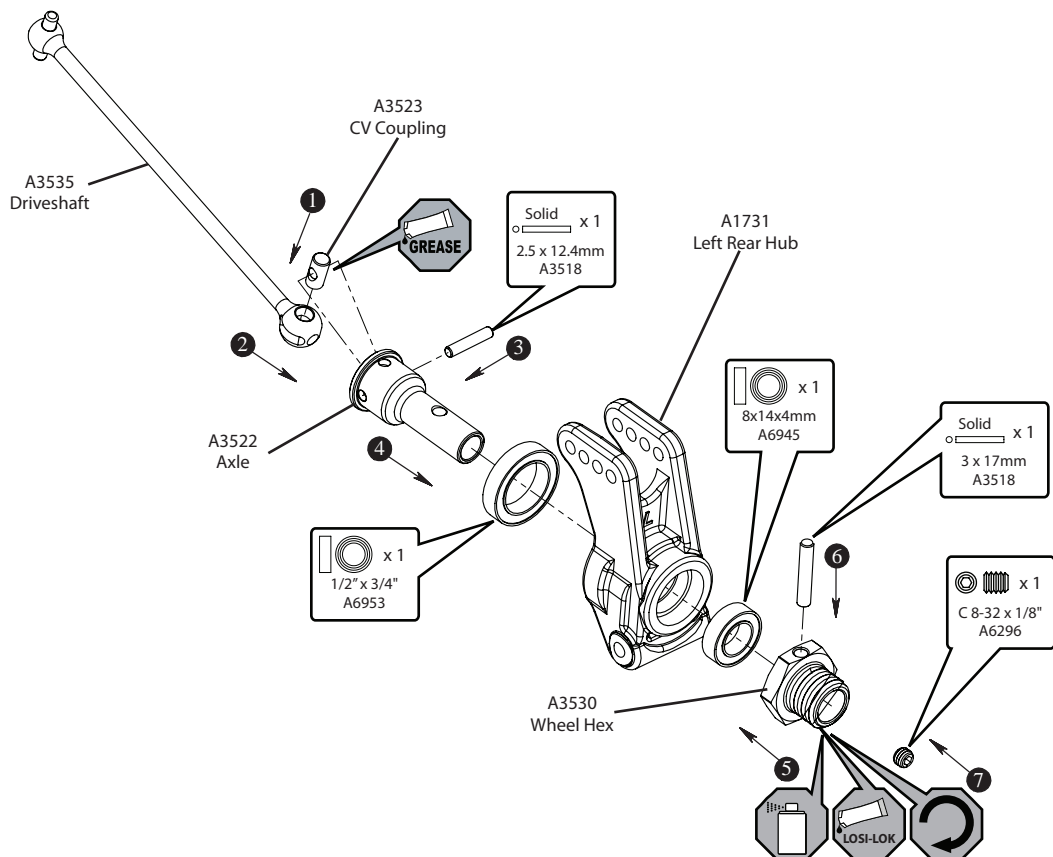
### Rear Diff Installation



The 8IGHT-E 2.0 comes with (2) .25mm shims and (1) .10mm shims on the left bearing insert. On the right bearing insert there are (3) .10mm shims. We advise that you start with this gear mesh with your new vehicle.

### STEP D-05

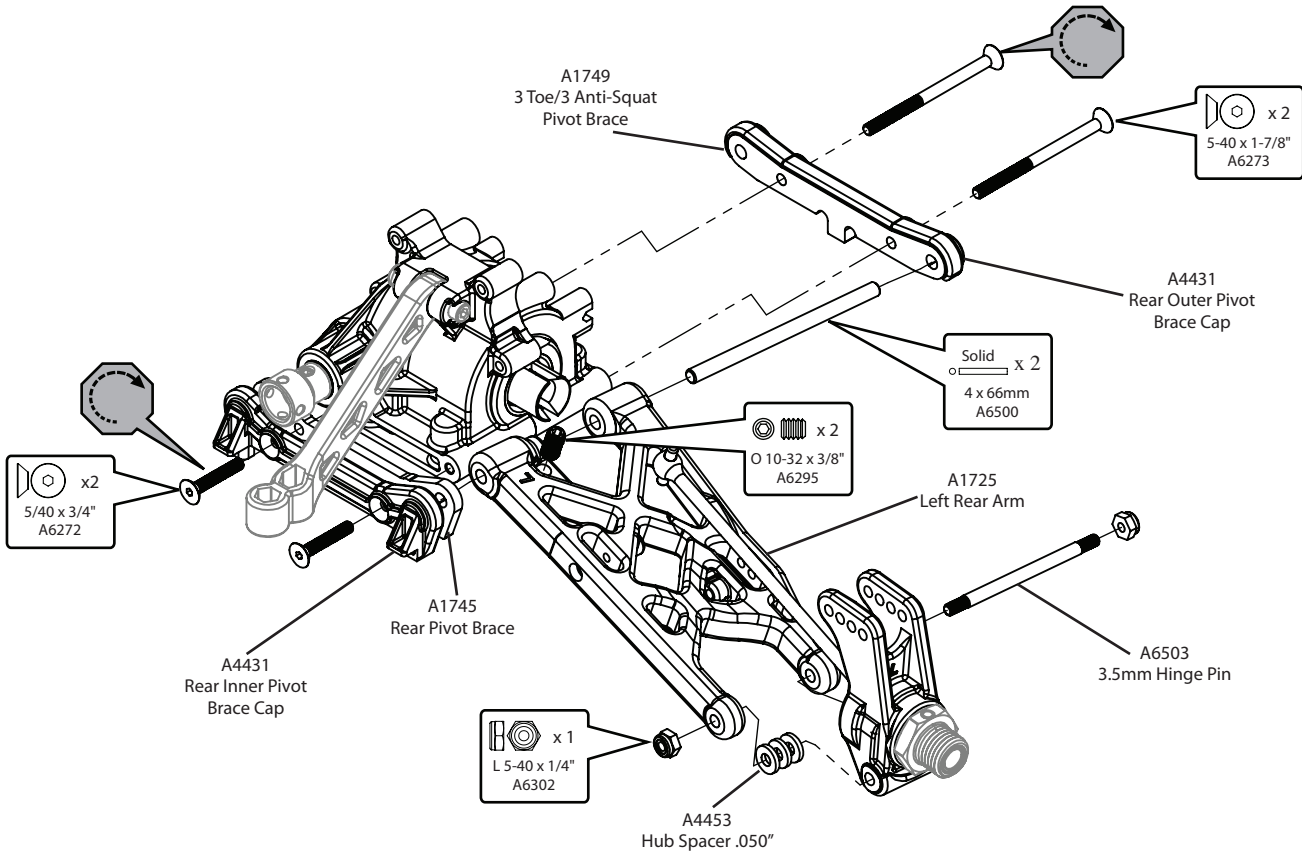
### Rear Hub & CV Assembly





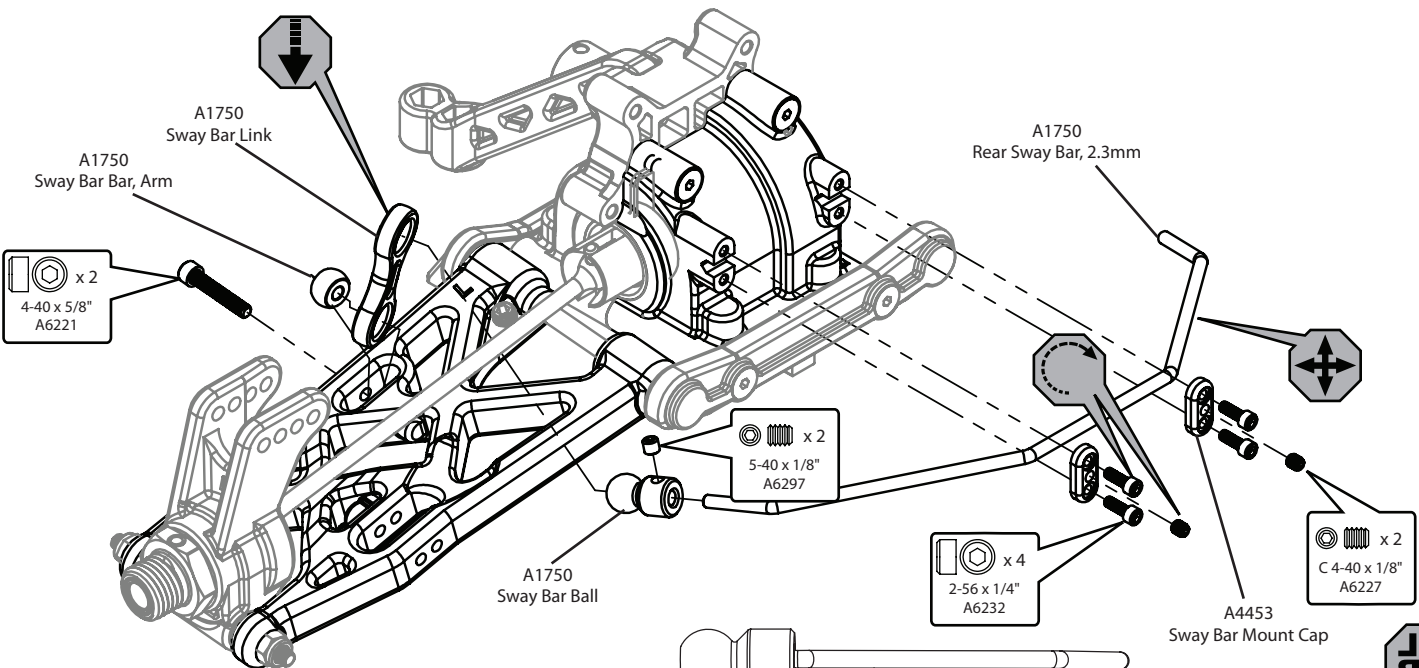
**STEP D-06**

**Rear Suspension Arm Assembly**



**STEP D-07**

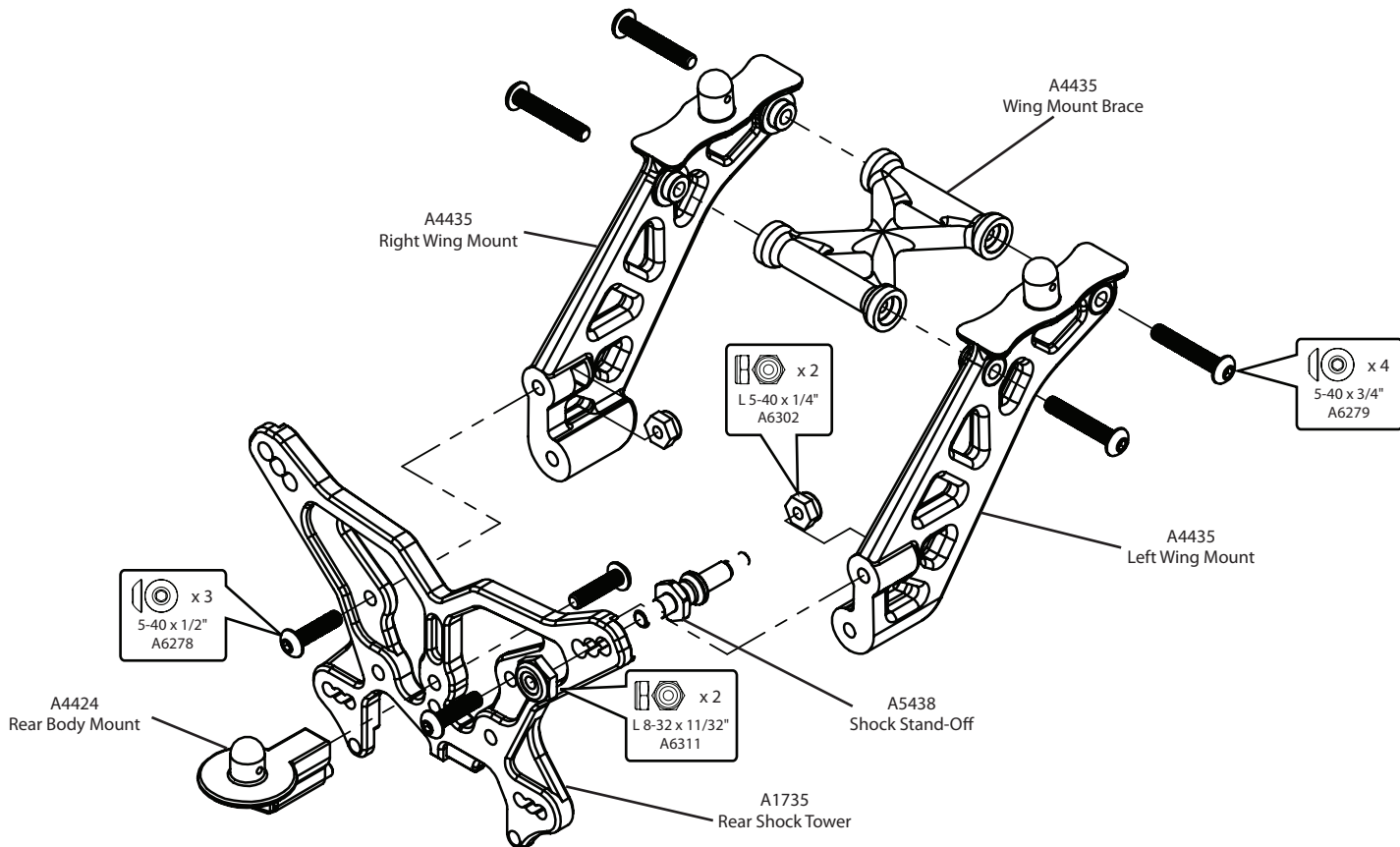
**Sway Bar Assembly**



Install the Sway Bar Ball onto the Sway Bar Wire until the end of the wire is flush with the ball as pictured above.

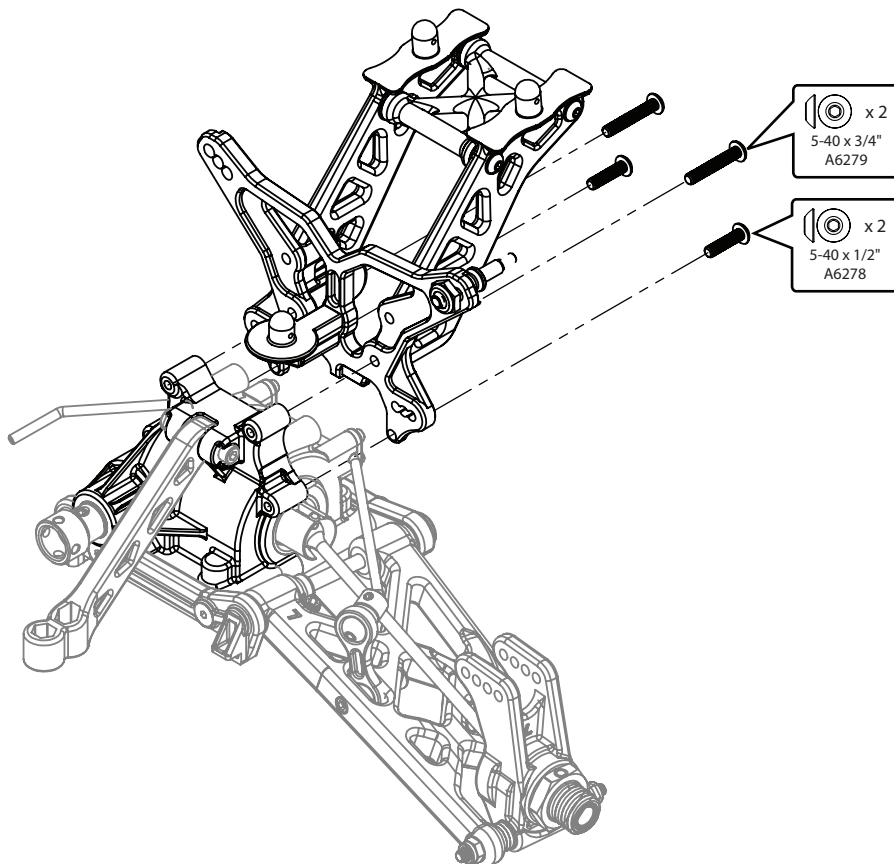
**STEP D-08**

**Wing Mount Assembly**



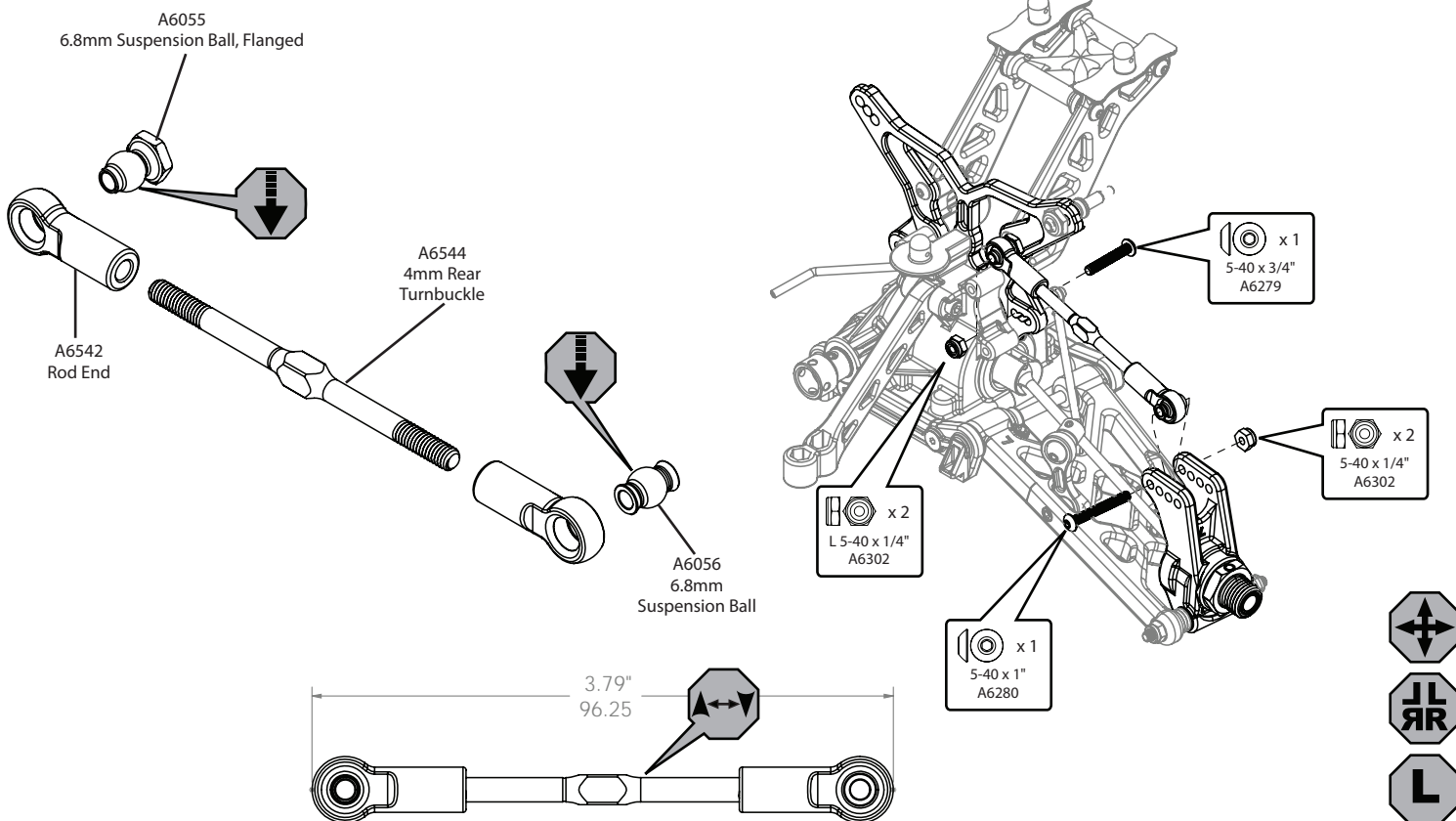
**STEP D-09**

**Rear Shock Tower Installation**



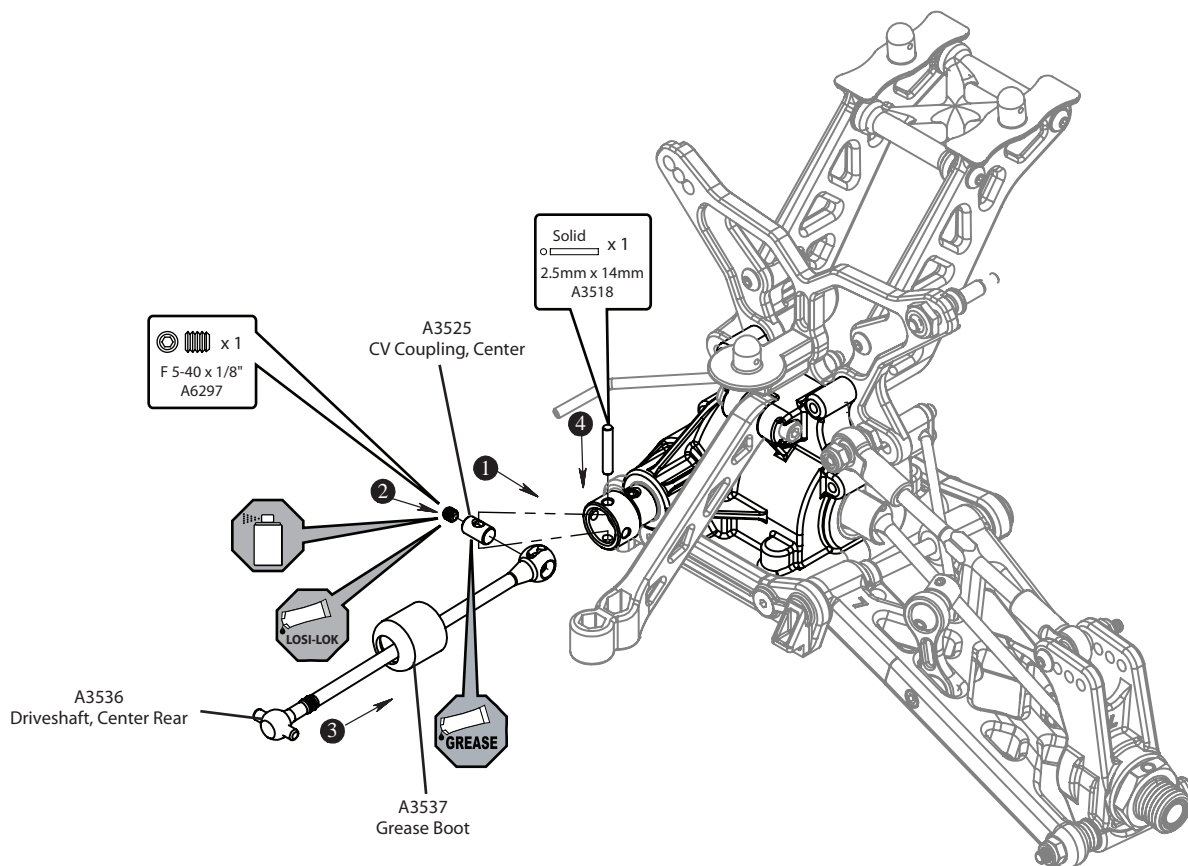
**STEP D-10**

**Tie Rod Installation**



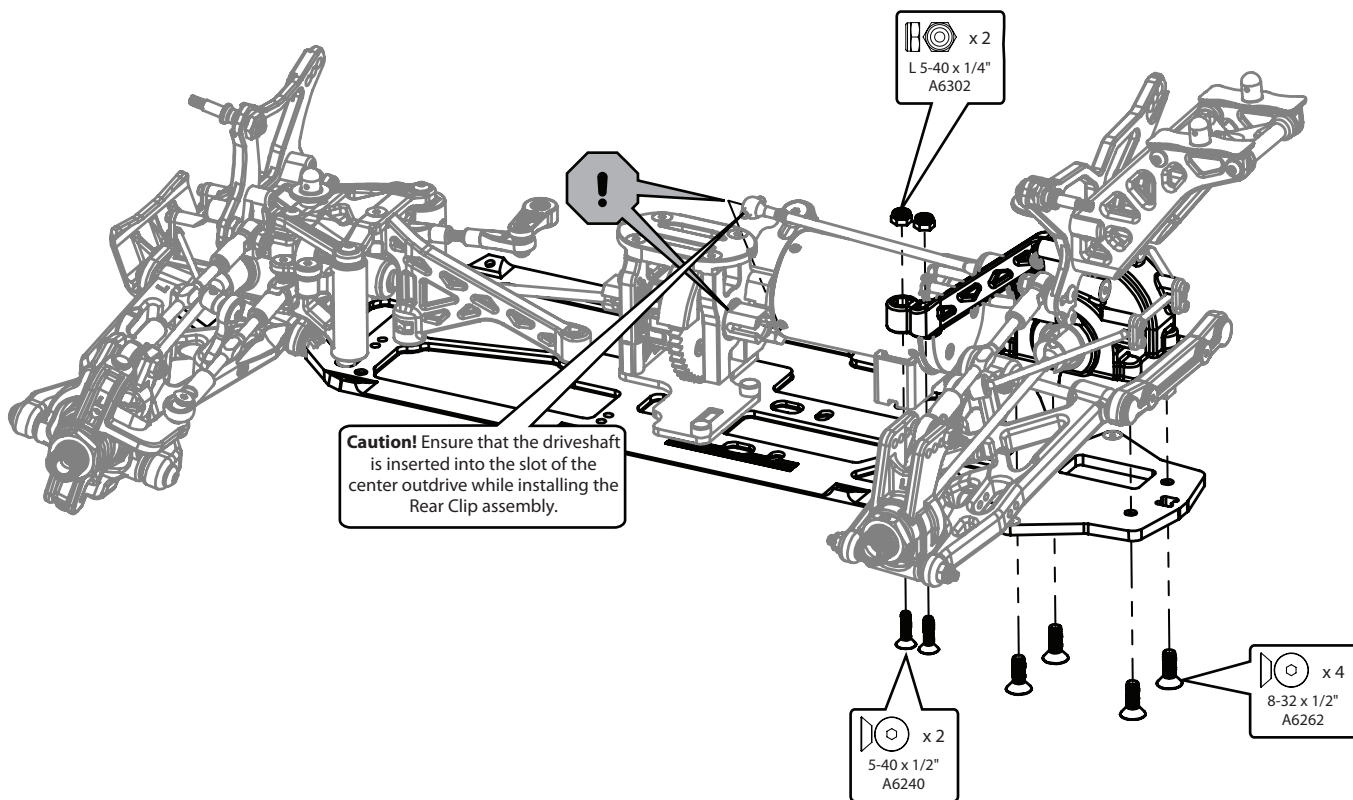
**STEP D-11**

**Center CV Assembly**



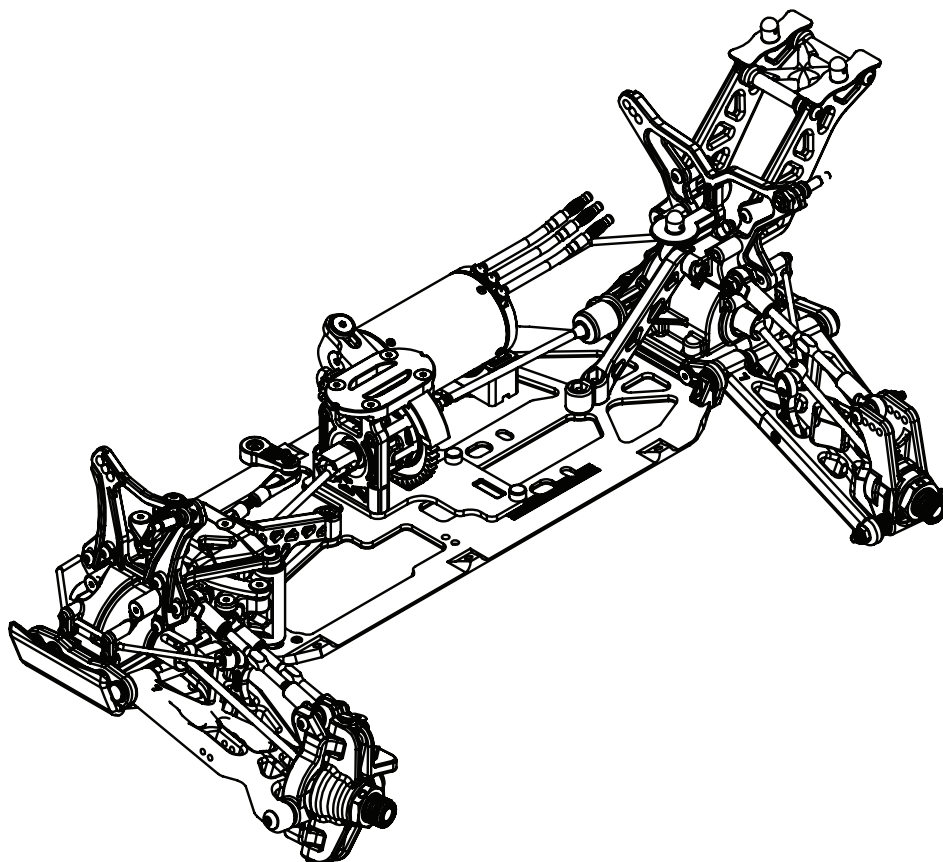
**STEP D-12**

*Rear Clip Assembly*



**STEP D-13**

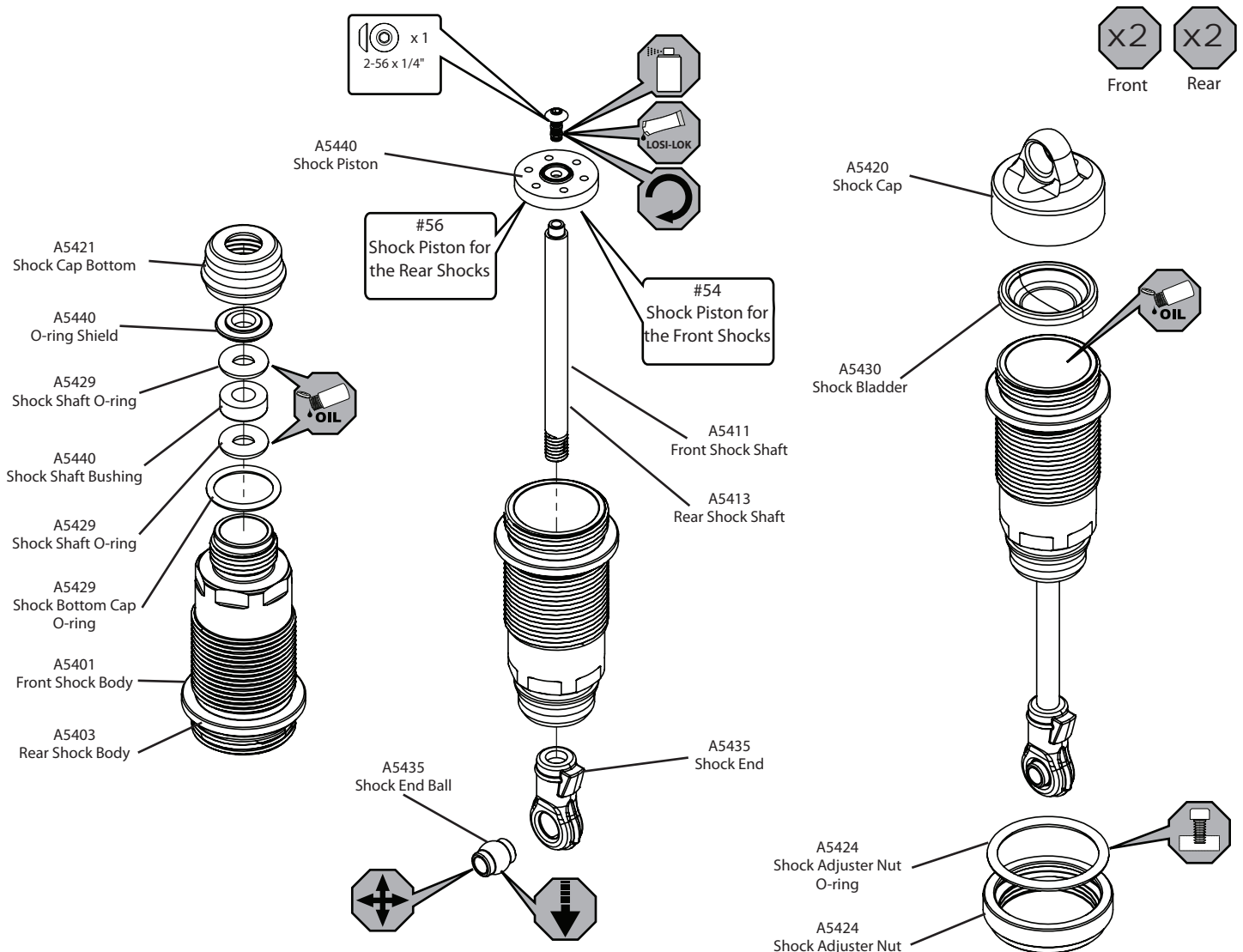
*Completed Rear Assembly*



## STEP E-01

### Shock Assembly

- Clean the 2-56 x 1/4" Button Head Screws and apply Losi-Lok to the threads.
- Install the #54 Shock Piston on the front shock shaft, and a #56 Shock Piston on the rear shock shaft, using the 2-56 x 1/4" Button Screws threaded into the Shock Shaft with a .050" Allen Wrench.
- Place a drop of Shock Oil into the bottom of the Shock Body to lubricate the Shock Seals.
- Thread the Shock Shaft into the Shock End using pliers. Use caution when threading the Shock Ends onto the Shafts. Avoid gouging or scratching the Shock Shaft while gripping the Shock Shaft with pliers by placing the edge of a towel over the shaft, then gripping the portion of the shaft covered by the towel. This method will work very well to protect the Shock Shafts from damage.
- Ensure the Shaft is fully extended when filling the shock.
- Fill the Front Shock Body with 40 wt Shock Oil and the Rear Shock Body with 25 wt until the oil is to the top of the body.
- "Work" the Shock Shaft up and down 8 times. This will release the air bubbles trapped beneath the piston. Place the filled shock, in the upright position, off to the side for a few minutes until the air bubbles escape from the oil.
- Once all the air bubbles are out of the oil, gently place the Shock Bladder onto the shock as shown. Some oil should "bleed" from the shock.
- Screw the Shock Cap onto the Body until some resistance is felt.
- Slowly push the Shock Shaft up. This will bleed excess oil from the shock.
- Tighten the cap all the way down using the shock tools included in your vehicle.
- Move the Shock Shaft up and down. The shaft should be easy to push up into the body of the shock. If increased pressure is felt towards the top, there is too much oil in the shock. Loosen the Shock Cap and "bleed" the shock as done previously.
- Make sure each pair (front/rear) of Shocks have the same rebound and compression. This is checked by holding one shock in each hand horizontally and pushing them together by the Shock End. Watch carefully to ensure that both compress evenly. Now release both shocks and again watch carefully as they should rebound the same.
- Install the Shock Adjustment Nut O-ring into the Shock Adjustment Nut before installing the Nut onto the Shock Body.

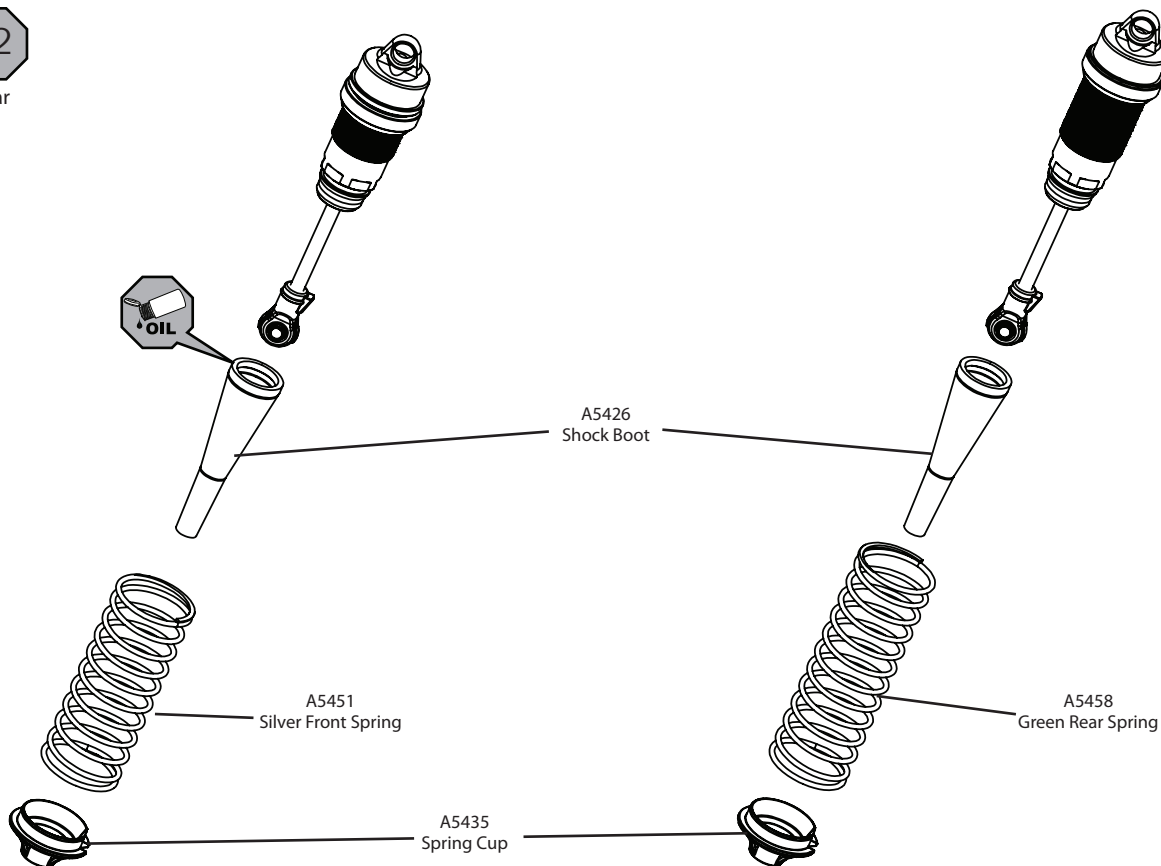


**STEP E-02**

**Shock Boot & Spring Assembly**

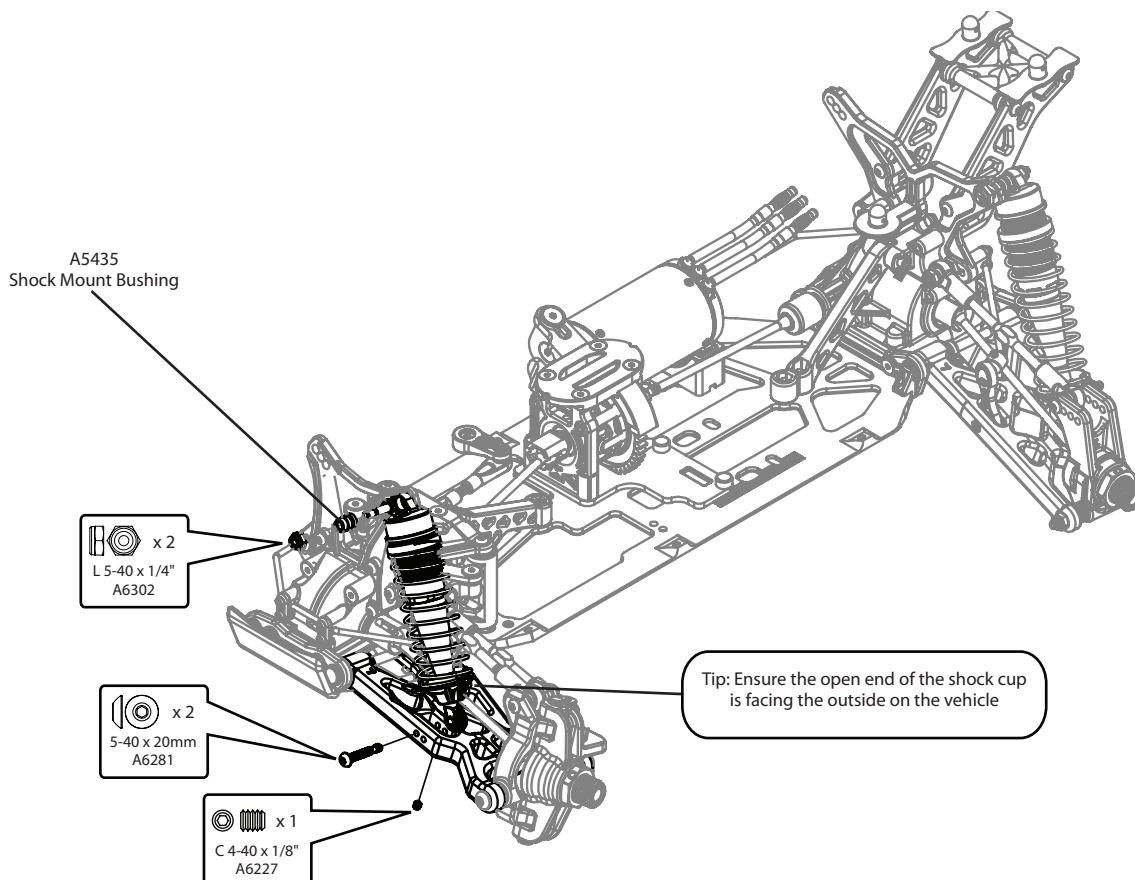
**x2**  
Front

**x2**  
Rear



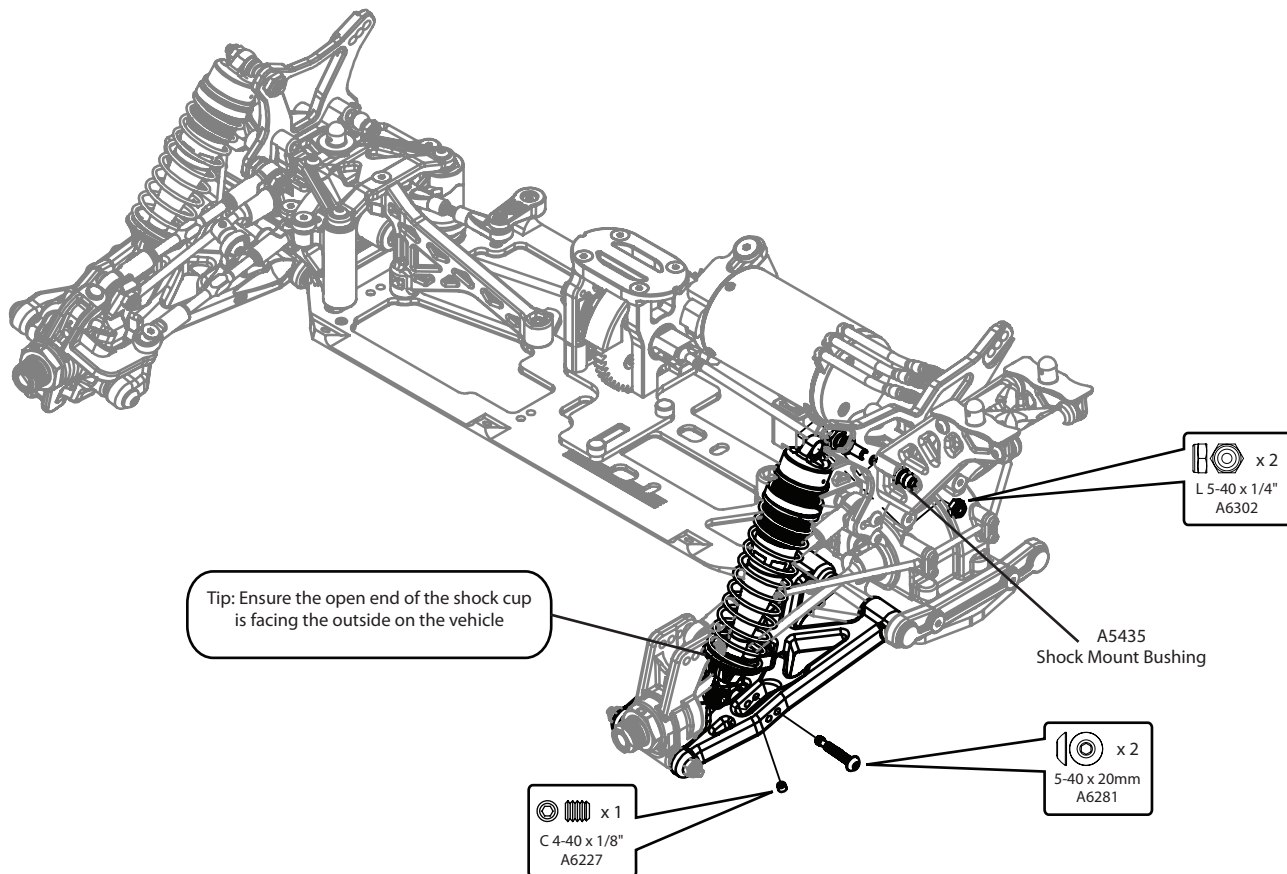
**STEP E-03**

**Front Shock Installation**



STEP E-04


Rear Shock Installation




Tip: Ensure the open end of the shock cup is facing the outside on the vehicle

 x 2  
L 5-40 x 1/4"  
A6302

A5435  
Shock Mount Bushing

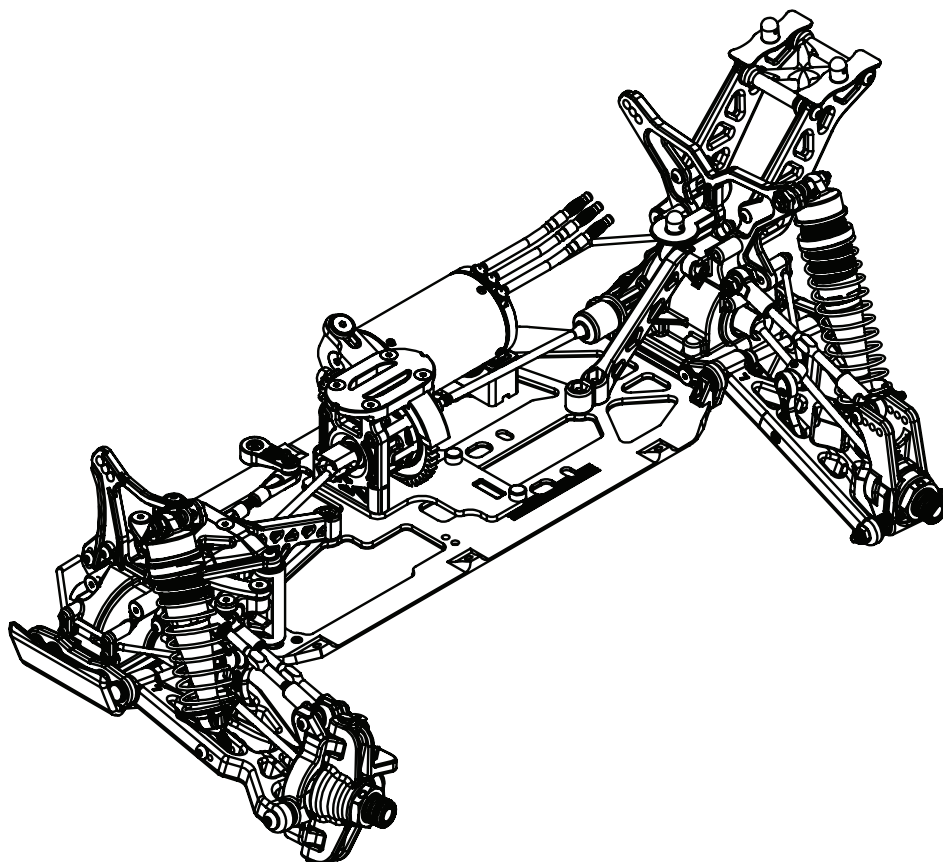
 x 2  
5-40 x 20mm  
A6281

 x 1  
C 4-40 x 1/8"  
A6227



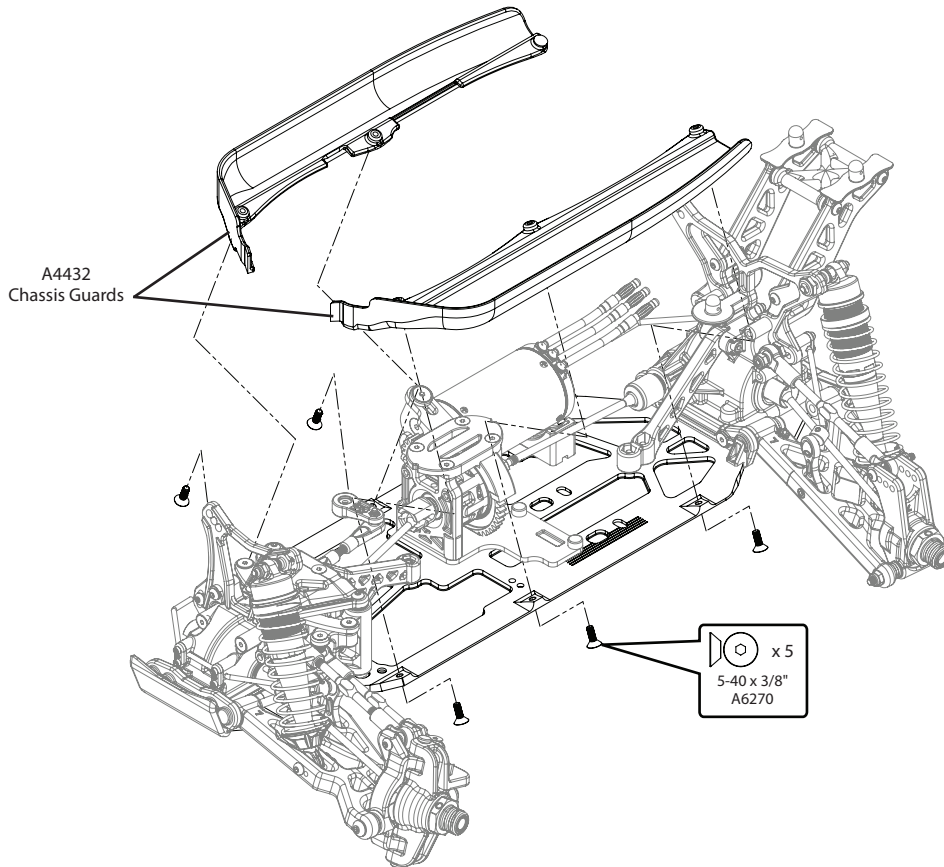
STEP E-05

Completed Shock Assembly



**STEP F-01**

**Chassis Guard Installation**

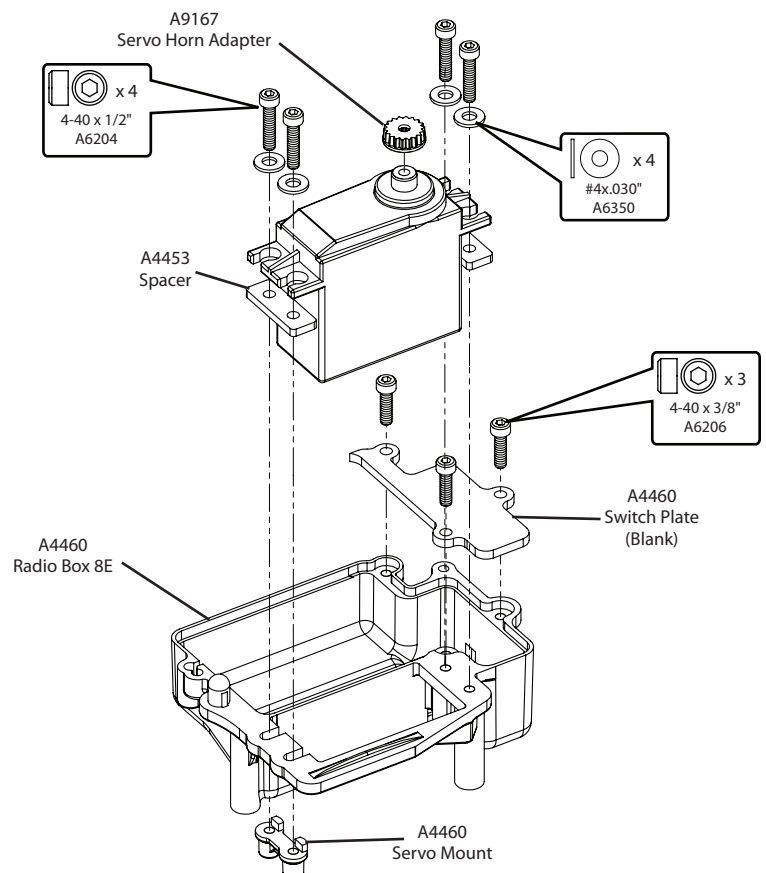


**STEP F-02**

**Steering Servo Installation**

Servo Manufacturer, Make/Model		Servo Spacer	Servo Horn
JR	All (DZ9100T/S Needs Spacer)	No	23T
Airtronics Sanwa	94357Z, 94358Z, 94649Z, 94360Z, 94452Z, 94758Z, 94737Z, 94738Z	Yes	23T
	94102Z, 94112Z	Yes	
Hitec	All	No	24T
Futaba	All (S9102 DOES NOT FIT)	No	25T
KO PROPO	PDS-2123, 2344, 2363, 2365, 2366	No	23T
		No	

Table2: Servo assembly and installation



Airtronics® is a registered mark of Sanwa Electronic Instrument Co., Ltd., Osaka, Japan.

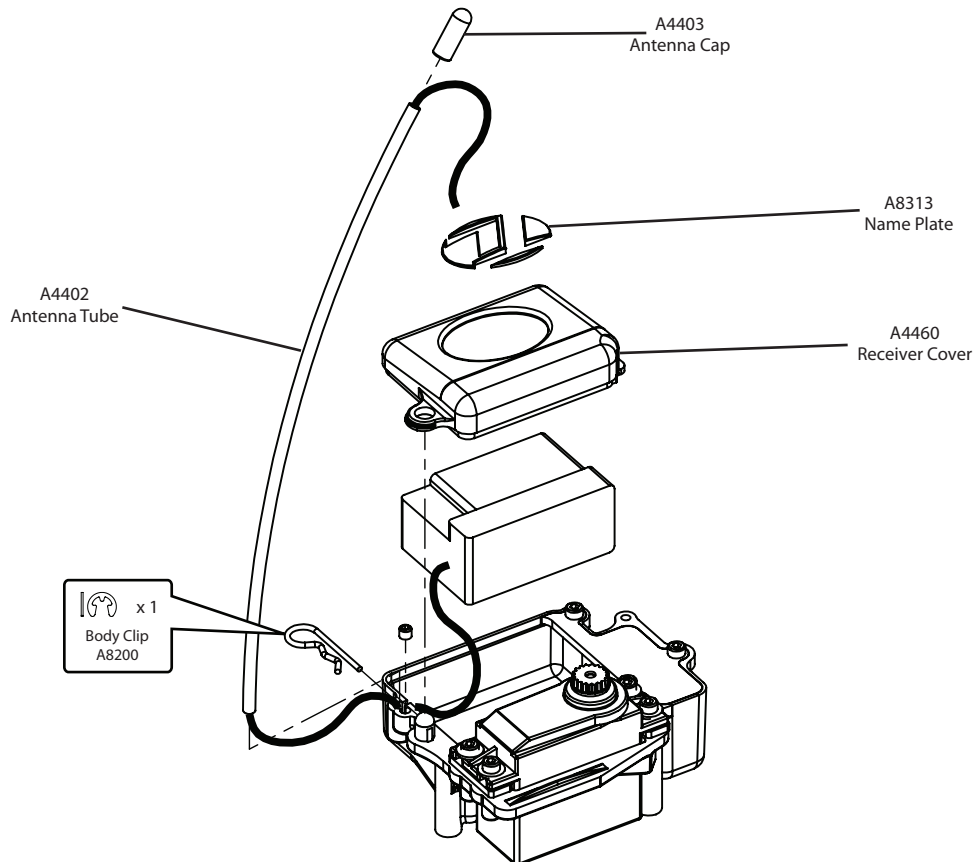
Futaba is a registered trademark of Futaba Denshi Kogyo Kabushiki Kaisha Corporation of Japan

KO PROPO® is a registered trademark of Kondo Kagaku Co., Ltd., Tokyo, Japan.



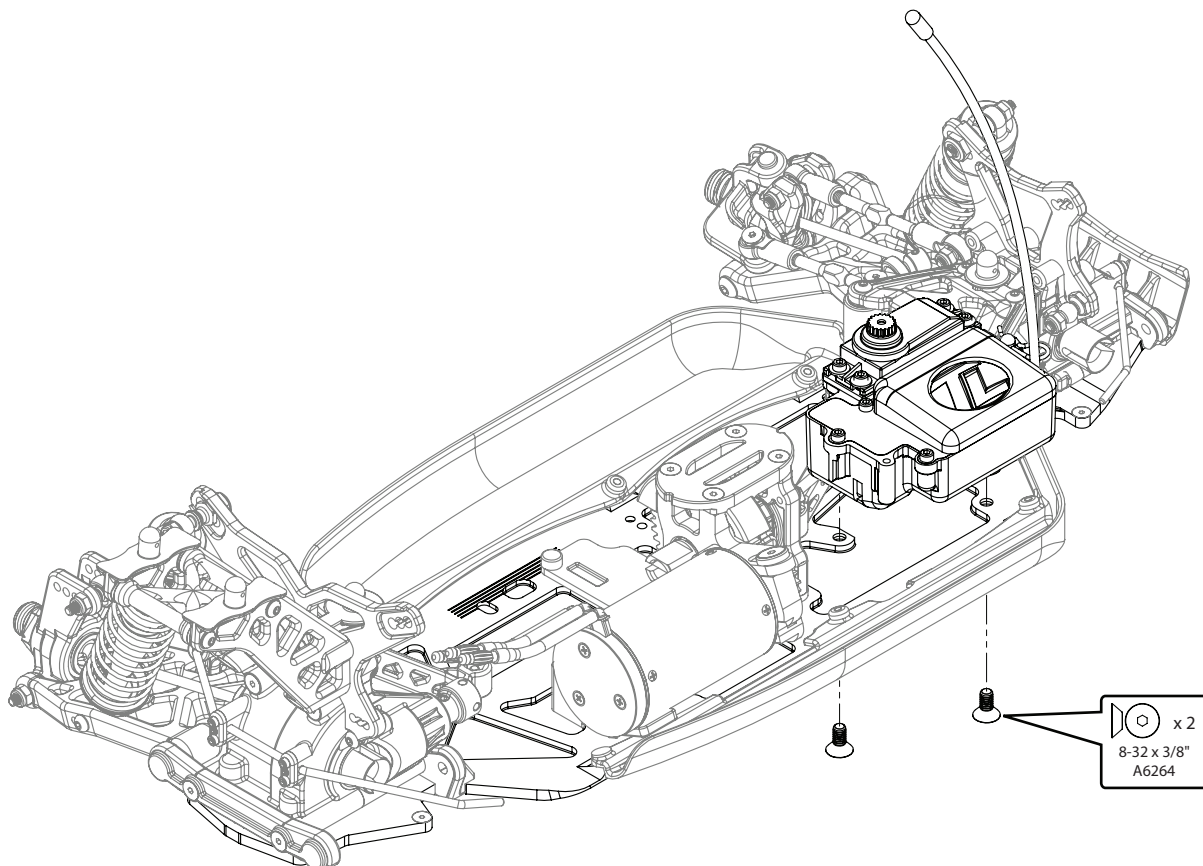
**STEP F-03**

*Receiver/Antenna Tube Assembly*



**STEP F-04**

*Radio Tray Installation*

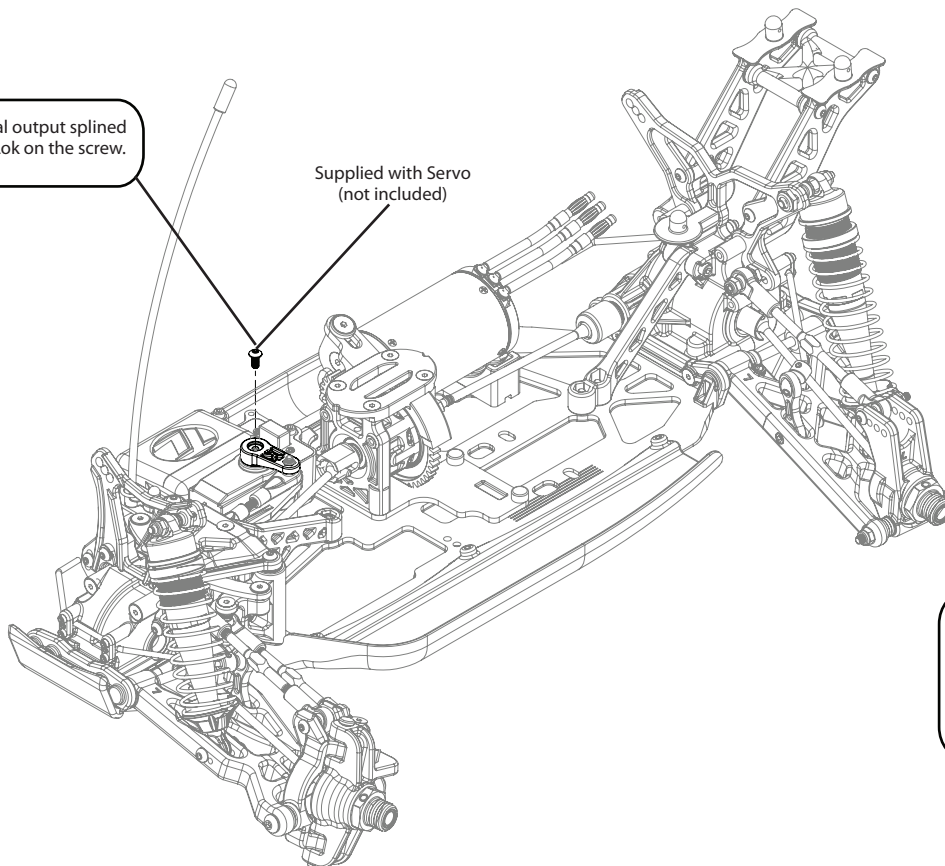


**STEP F-05**

*Servo Horn Installation*

Tip: If you are using a metal output splined servo be sure to use Losi-Lok on the screw.

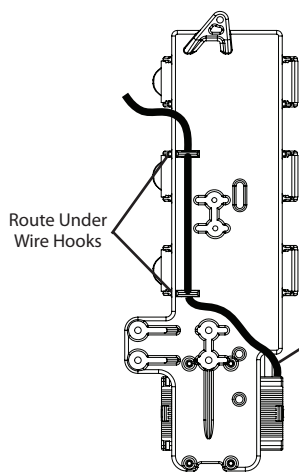
Supplied with Servo  
(not included)



Ensure the servo gear is centered before attaching the Servo Horns. This is best accomplished by connecting the servo to the radio system and setting the trim to center.

**STEP F-06**

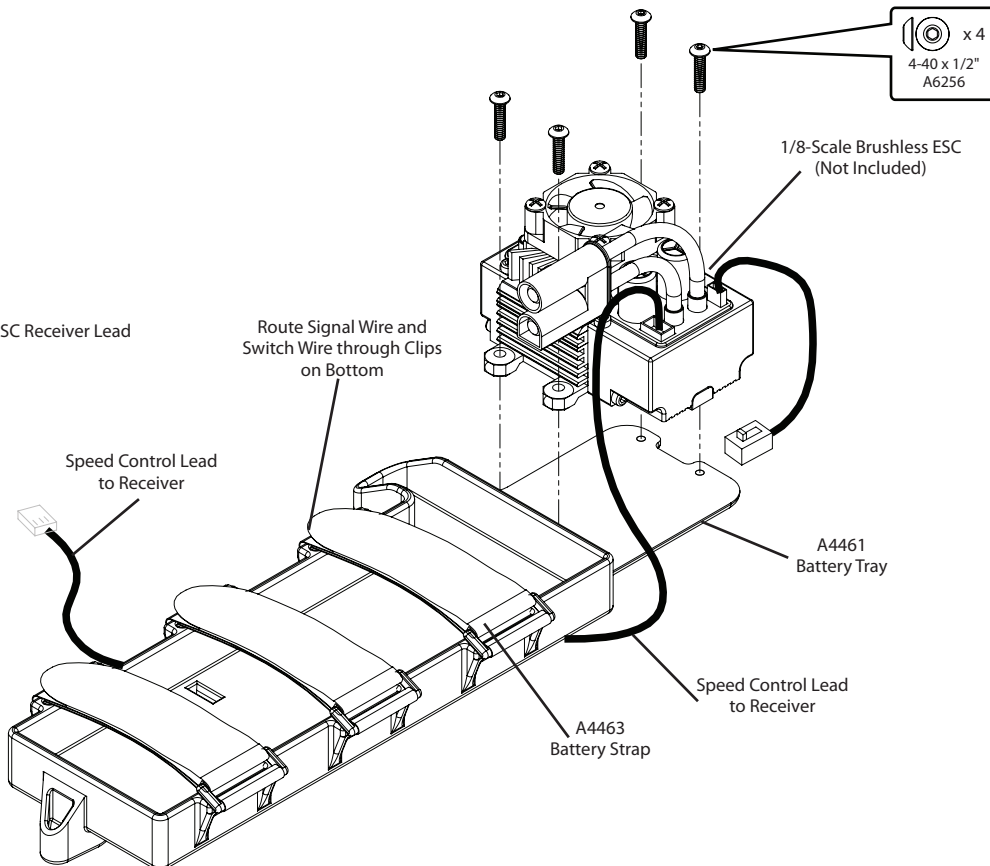
*ESC Installation*



Route Under Wire Hooks

ESC Receiver Lead

BOTTOM VIEW



x 4  
4-40 x 1/2"  
A6256

1/8-Scale Brushless ESC  
(Not Included)

Route Signal Wire and  
Switch Wire through Clips  
on Bottom

Speed Control Lead  
to Receiver

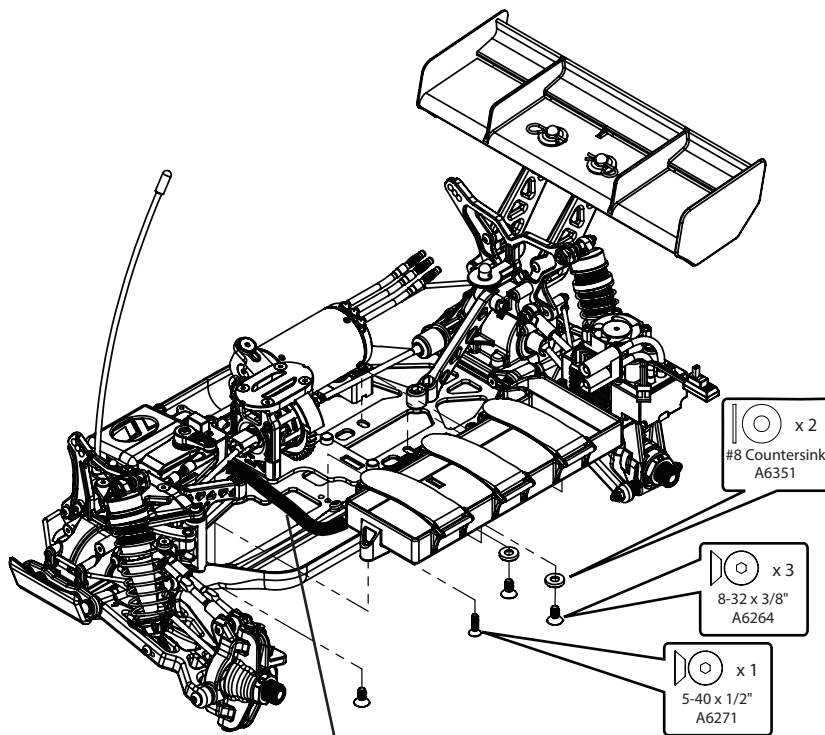
A4461  
Battery Tray

Speed Control Lead  
to Receiver

A4463  
Battery Strap

**STEP F-07**

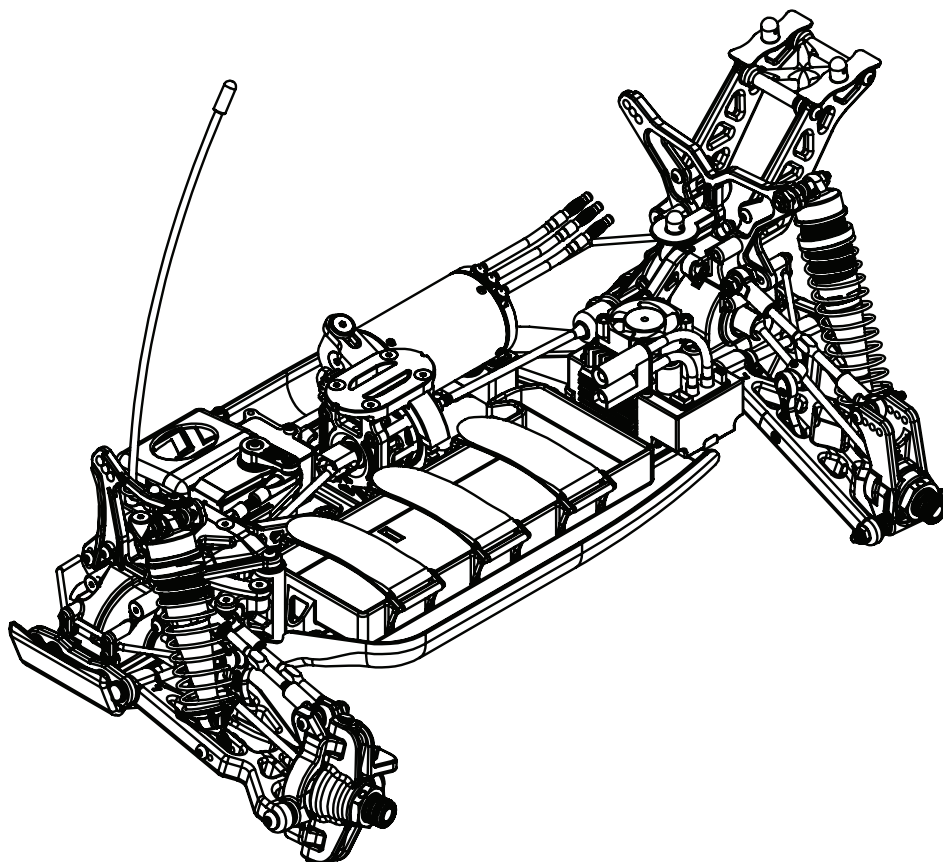
*Battery Tray Installation*



Speed Controller Lead Wire  
(Connect to Channel 2 in Receiver)

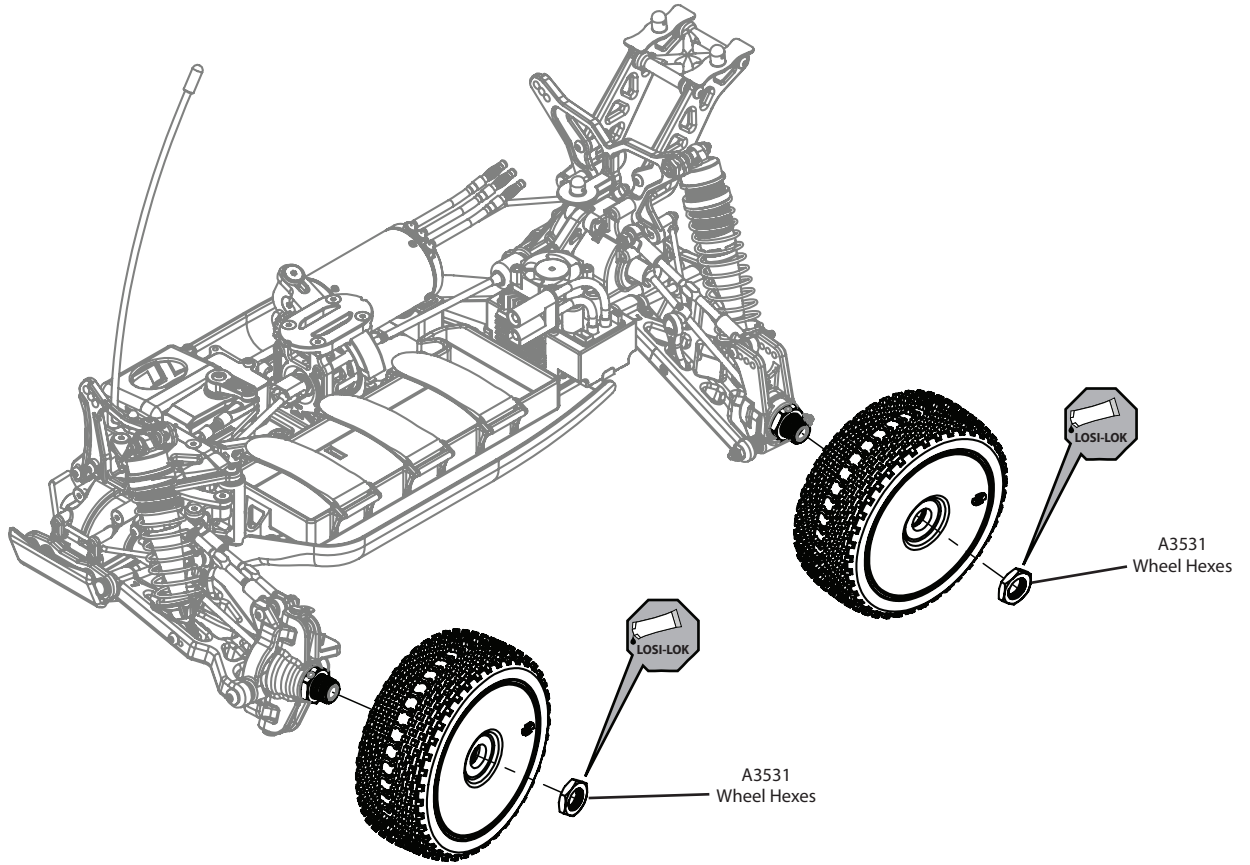
**STEP F-08**

*Completed Radio Tray and Battery Installation*



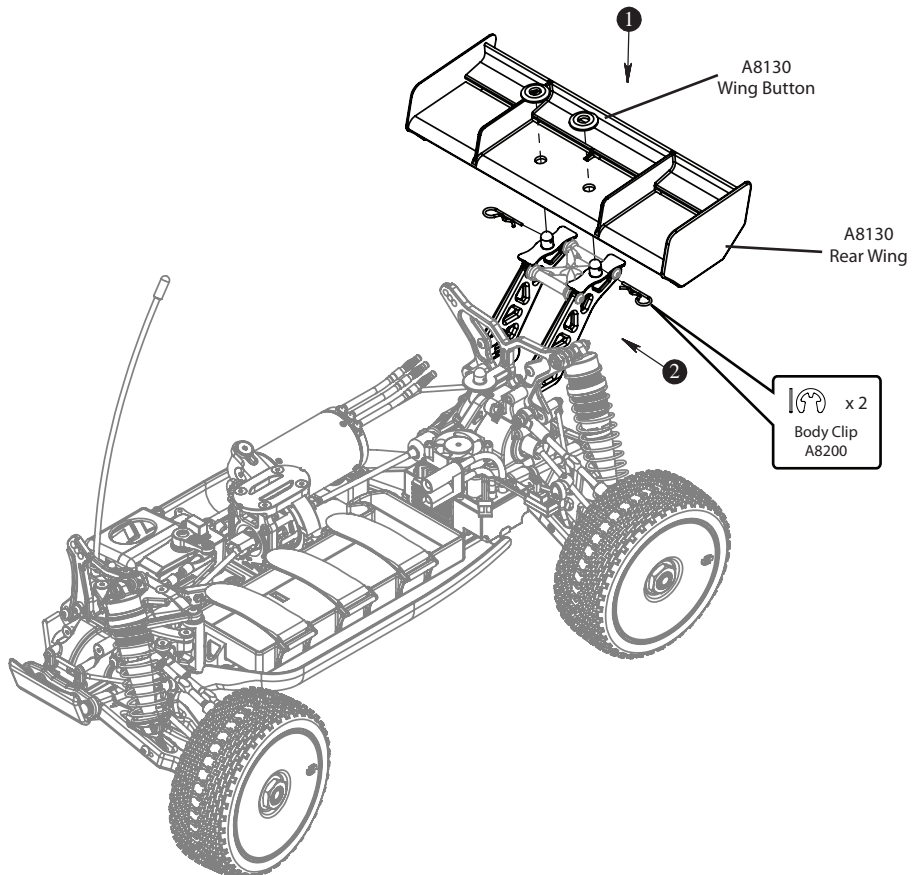
**STEP G-01**

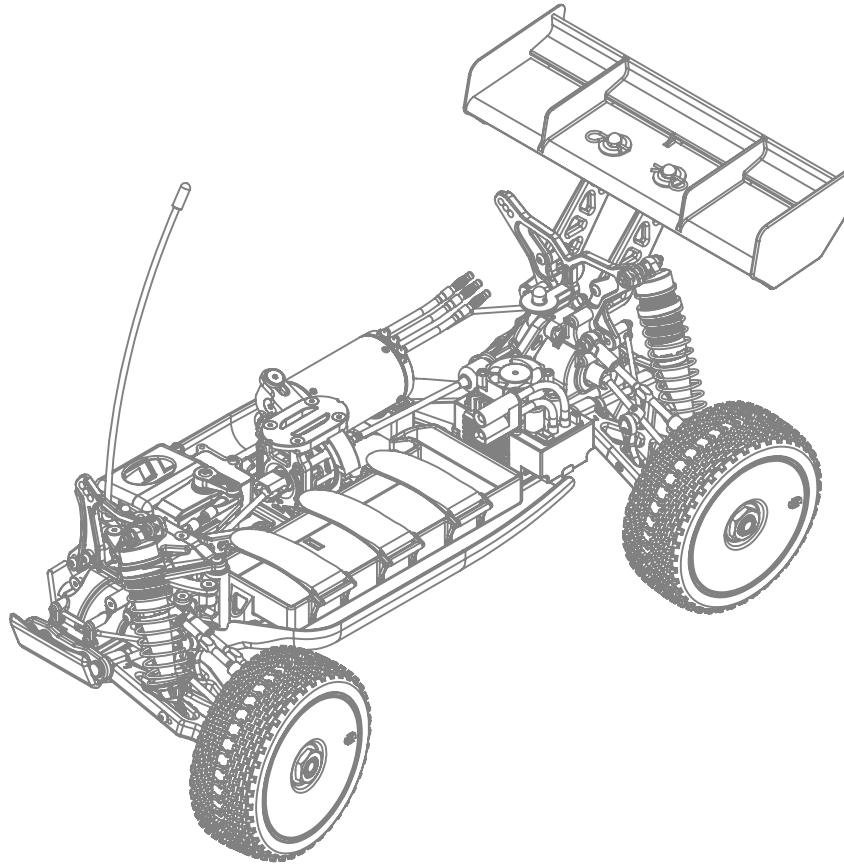
*Tire Installation*



**STEP G-02**

*Wing Installation*



**STEP G-03***Completed Chassis Assembly***STEP G-04***Painting the Body****Painting:***

Prepare the Lexan Body for painting by washing it thoroughly (inside and out) with warm water and liquid detergent. Dry the body with a clean, soft cloth. Use the supplied window masks to cover the windows from the inside. A high-quality masking tape should be used on the inside of the body to mask off any stripes, panels, or designs that you wish to paint on the body. Use acrylic lacquer or other paints recommended for Lexan (polycarbonate). (NOTE: LEXAN RC CAR BODIES ARE MEANT TO BE PAINTED FROM THE INSIDE!) Apply paint to the inside of the Body. Remove the masking tape for the next color and continue. Try to use darker colors first. If you use a dark color after a light color, apply a coat of white paint over the lighter color before applying the darker color, or if you are painting over white, coat it with silver. This will help prevent the darker color from bleeding through the lighter color.

***Mounting:***

The body is already cut out for mounting. However, you will need to cut out the area for the pipe stinger. This should be done before you paint your body so you can easily see where it exactly needs trimmed.

***Stickers:***

After the body is mounted, REMOVE THE PROTECTIVE FILM ON THE OUTER SURFACE, now you can apply the stickers.

**BEFORE RUNNING YOUR NEW 8IGHT-E 2.0 OFF-ROAD RACING BUGGY** for the first time, you should run down the following checklist in order and complete the listed tasks. We're sure you're anxious to get out and run your new 8IGHT-E 2.0 now that it's built, but please note that fine-tuning of the initial setup is an essential part of building a high-performance racing buggy such as your new 8IGHT-E 2.0. Following this simple Checklist and the Team Tips will help to make the first run with your new car much more enjoyable.

**1. *Break in the differential:***

While holding the chassis with **only** the left side tires firmly on the ground, give the car about one eighth throttle, for 30 seconds. The right side tires should spin freely during this time. Repeat this with **only** the right side tires held firmly to the ground, allowing the left tires to spin. Repeat these steps at least two more times.

**2. *Check for free suspension movement:***

All suspension arms and steering components should move freely. Any binds will cause the car to handle poorly.

**3. *Set the ride height:***

Set the ride height on your buggy so that the bottom of the chassis is 27mm from the ground in front and 29mm in the rear by adjusting the shock adjustment nuts, effectively increasing or decreasing preload on the springs. See the Setup Guide for additional information on ride height adjustment.

**4. *Set the camber:***

Adjusting the camber tie rod length changes the amount of camber. Use the Losi wrench to adjust the tie rods once installed. Rotating the tie rods towards the front end of the vehicle will shorten the length, increasing negative camber. Rotating the tie rods towards the back of the car will lengthen them, increasing negative camber. Set the front tires to have 1 degree of negative camber and ensure that they are adjusted equally, left to right. Set the rear tires to have 2 degrees of negative camber and ensure that they are adjusted equally, left to right.

**5. *Set the front toe-in:***

Adjust the front steering tie rods so that when the servo is centered on the transmitter, the front tires are both pointing slightly out with 2 degrees of toe-out. Refer to the Setup Guide for more information on toe-in/out.

**6. *Charge a battery pack:***

Charge a battery pack as per the battery manufacturer's and/or charger manufacturer's instructions. Never plug the battery into the speed controller backwards as this will damage the speed controller.

**7. *Adjust the electronic speed control (ESC):***

Follow the manufacturer's instructions, adjust your speed control and set the throttle trim so that the buggy does not creep forward when no transmitter input is applied. Make sure there is not much brake being applied when the throttle input is at the neutral position. Some speed controls have a high/low setting for brakes.

**8. *Set the transmitter steering trim:***

The steering trim tab on the transmitter should be adjusted so that the car rolls straight when you are not touching the steering wheel/stick. If the servo and steering link were installed correctly, the wheels should turn equally to the left and right. If this is not the case, refer to Table 2 and ensure that the steering servo and horn were properly installed. Also check the steering link length as noted in Step A-01. Make sure the throttle trim is set so that the brakes are not "dragging" in the neutral position.

# TIPS AND HINTS FROM THE TEAM

Before you start making changes on your 8IGHT-E 2.0 Off-Road Racing buggy, you need to make a few decisions. First of all, tires, and how they are set up, have a tremendous impact on overall performance. Before you start making changes on the chassis setup, take a moment to observe a few of the fastest cars at the track and what type of tire and inner liner they are running. You will find the best adjustment will become a personal decision based on the "feel" that each of these adjustments yield. Never make more than one change at a time; if the change you made works adversely, or doesn't address your need, return to the previous position and try something else. Team Losi Racing development team has put hundreds of hours on the 8IGHT-E 2.0 to arrive at the setup we put in the instruction manual. If you find that you have lost the "handle" go back to the vehicle (stock) setup, as this setup has proven to be reliable, consistent and easy to drive.

All of us at Losi are sure that you will find the 8IGHT-E 2.0 Off-Road Racing Buggy to be the most versatile and easiest car to drive fast, with great consistency. We hope the information in the following guide helps you to enjoy your 8IGHT-E 2.0, and racing it, as much as we do. For the latest in setup and accessory parts information, visit the Losi web site at: [www.losi.com](http://www.losi.com) regularly. Please check the Losi web site periodically to find out new setup information as we are always testing on all types of tracks and surfaces. Also note that there are many ways to set up a car. The rules we follow can reverse sometimes with different driving styles or different setup styles, so test for yourself and you will find a setup that works right for you.

## ***Droop:***

Always measure the droop of the 8IGHT-E 2.0 with the shocks on the buggy. Droop is always measured from the center of the top shock mount to the center of the bottom shock screw. More droop (travel) in the front will have more on-power steering and allow the buggy to roll more on the rear when on throttle. More droop (travel) in the rear will increase off-power steering and allow the buggy to roll on the front when off throttle. More front and rear droop will accelerate better in bumps when going straight, but can cause the buggy to traction roll in rough turns. Less front and rear droop will slide over bumps better in turns and may be better on high-speed and high-traction tracks.

## ***Front Camber Links:***

The lower camber link locations on the tower have more camber gain (total camber change through the suspension travel). Running the camber tie rod in the lower holes will increase off-power steering and make the vehicle more aggressive; however, you may lose some consistency. More camber gain is good on small tight tracks. We have found that running less camber gain in the front suits the car the best for consistency and steering balance. On the 8IGHT-E 2.0 we offer a longer camber link on the spindle carrier. A longer front camber link will make the vehicle feel stiffer and this will keep the buggy flatter with less roll and increase high-speed steering. A short front camber link will roll more and make the vehicle more aggressive. Too short of a front link may make the vehicle feel twitchy.

## ***Rear Camber Links:***

The 8IGHT-E 2.0 now has only three camber locations on the rear tower, however, we have added another inside hole on the rear hub. The stock camber link setup for the 8IGHT-E 2.0 is location #2 on the tower and B in the hub. By using a longer rear camber link you will have less roll and improve stability and traction. A shorter rear camber link will have more roll and increase steering and better handling in the bumps. Running "A" in the rear hub will generate more corner rotation entering the turn, but decrease steering on exit. Running "B" in the hub will be more stable entering the turn and increase steering on exit.

## ***Pistons:***

Generally smaller hole pistons, #56, have stiffer damping, slower weight transfer, slower response, and will land large jumps better. Larger hole pistons, #54, have softer damping, increased traction, quicker weight transfer/response, and bottom out easier off large jumps.

## ***Shock Oil:***

Lighter shock oil has more overall traction and responds quicker. Thicker oil has less overall traction and reacts slower. On high-bite/smooth tracks, thicker oil is easier to drive. Make sure you adjust oil when there is a drastic temperature change (20-25 degrees). If it gets cold outside you need to go to lighter shock oil. If it gets hotter outside you need to go to thicker weight shock oil.

## ***Front Toe:***

You never want to run toe-in on the front of the 8IGHT-E 2.0. Front toe-in (longer steering rods) decreases steering response entering and in the middle of the turn but will increase on-power steering. Toe-out (shorter steering rods) increases steering response when entering the turn and increases straight line stability, however, it will decrease on-power steering.

## ***Rear Toe-in:***

The 8IGHT-E 2.0 is equipped with 3 degrees of toe-in per side. Less rear toe-in will increase the wheel base of the buggy and decrease forward traction, but will increase top speed and side traction in the middle of a turn. More toe-in will increase forward traction, have more off-power steering and less side traction.

## ***Wheel Base:***

The 8IGHT-E 2.0 is equipped with a long wheelbase. A shorter wheelbase (spacers behind the rear hubs) increases on-power traction, rear weight transfer, and has more off-power steering. A shorter wheelbase is better on tight or slick tracks. A longer wheelbase (spacers in front of the rear hubs) decreases off-power steering, is more stable, better in bumps, and has more on-power steering.

## ***Sway Bars:***

The 8IGHT-E 2.0 is equipped with 2.3mm sway bars on the front and rear. A thinner front sway bar increases front off-power traction, but has less on-power steering. A thicker front sway bar decreases front off-power traction making the steering smoother entering the turn, but has more on-power steering. A thinner rear sway bar increases rear traction and decreases on-power steering. A thicker rear sway bar increases stability in the middle of the turn and increases on-power steering. Thicker sway bars are more stable on high-speed, high-traction tracks.

### Differentials:

The 8IGHT-E 2.0 comes equipped with 5000 wt in the front and center diff, and 2000 wt in the rear diff. Thinner front differential oil increases off-power steering, but if the oil is too thin the steering will become grabby and inconsistent. Thicker front differential oil increases off-power stability and increases on-power steering. Thinner center differential has less forward drive, can unload more under acceleration and is easier to drive on rough and slick tracks. Thicker center differential has more acceleration, increases on-power steering, and less off-power steering. Thicker center differential is better on high-bite/smooth tracks. Thinner rear differential has more cornering traction and increases steering in the middle of the turn. Thicker rear differential has less steering in the middle of the turn and more forward traction.

### Shock Mounting Positions:

More inclined (moving the shocks in on the tower) has softer initial damping and is more forgiving. Less inclined (moving the shocks out on the tower) makes the car more responsive and is better for technical tracks.

### Ackerman:

A long Ackerman plate will have smooth off-power steering and is more forgiving. The long Ackerman plate will have more steering on-power. A short Ackerman plate responds quicker and has more steering in the middle of the turn. A short Ackerman plate is better suited for tight technical tracks.

### Camber:

More negative camber in the front has more steering and is more responsive. Less negative camber in the front will have less steering and will be smoother. More negative camber in the rear will have less rear traction, but will increase on-power steering and will be less grabby in bumps. Less negative camber in the rear will have more rear traction and make the rear of the buggy stay flatter, but if traction is lost it will be more violent. To ensure your 8IGHT-E 2.0 has the correct camber we recommend using our Losi Camber Gauge (LOSA99172).

### Gearing:

The stock gearing for the 8IGHT-E 2.0 is 15-tooth pinion with a 45-tooth spur gear. This gearing is recommended to be used with a 4S LiPo, and a 1700Kx brushless motor. If a 5S LiPo is desired, gearing must be reduced down to 13-tooth pinion (LOSA3753). If you are running on a very large sweeping track a 16-tooth pinion (LOSA3756) is recommended. See gear chart below for other Kv rated motors and their recommended gearing.

8IGHT-E 2.0 with 45T Spur		
Motor Kv	Recommended Pinion	
	4S Li-Po	5S Li-Po
1300	17	15
1700	15	14
2100	15	13
2400	13	11

8IGHT-E 2.0 Gear Ratio Chart										
	Pinion									
		10	11	12	13	14	15	16	17	18
Spur	43	14.23	12.94	11.86	10.95	10.17	9.49	8.90	8.37	7.91
	44	14.56	13.24	12.14	11.20	10.40	9.71	9.10	8.57	8.09
	45	14.90	13.54	12.41	11.46	10.64	9.93	9.31	8.76	8.28
	46	15.23	13.87	12.74	11.79	10.97	10.26	9.63	9.08	8.59

### Battery Selection:

Team Losi Racing recommends using a Losi 14.8V 5000mAh 4S 25C LiPo (LOSB9864) with the 8IGHT-E 2.0 with its respective gearing. Generally with a 4S 5000mAh LiPo in the 8IGHT-E 2.0 we have experienced up to 13 to 15 minutes of run time; however, this varies with track size and the amount of traction that is available. An 18.5V 4000mAh 5S 25C LiPo (LOSB9834) can be used to increase overall power however a lower gearing is required. On small indoor tracks we have found that a 5S LiPo with a 1300Kv (LOSB9420) motor geared at 13-tooth has offered good power with great drivability.

### Outdrives and Traction:

When your 8IGHT-E 2.0 is new it will have a lot of chassis roll and be a little loose on throttle due to lack of friction in the outdrives and crossbones. After about 45-60 minutes of running, the 8IGHT-E 2.0 will gain traction and stability. Once your 8IGHT-E 2.0 is broken in, replacing the outdrives and crossbones with new parts will have more corner speed.

### Bump steer:

Running the bump steer ball down you will have smoother steering in the middle of the turn. With the bump steer ball up, this will increase steering in the middle of the turn.

### Rear Squat:

The 8IGHT-E 2.0 comes with three degrees of anti-squat. Running less anti-squat will have less off-power steering and roll (side to side) more on the rear. Less anti-squat will accelerate better in small bumps. More anti-squat will have more support (side to side) and be better on rough tracks with big jumps.

### Ride Height:

Measuring from a flat surface to the bottom face of the chassis, adjust the front of the chassis with 27mm of ride height and 29mm in the rear. We have found the 8IGHT-E 2.0 handles best when the front ride height is 1mm to 2mm lower or at least level than the rear of the truck. To measure your ride height properly we recommend using the Losi Ride Height Gauge (LOSA99173).



## Warranty and Repair Policy

### Warranty Period:

Exclusive Warranty- Horizon Hobby, Inc., (Horizon) warrants that the Products purchased (the "Product") will be free from defects in materials and workmanship at the date of purchase by the Purchaser.

### Limited Warranty

Horizon reserves the right to change or modify this warranty without notice and disclaims all other warranties, express or implied.

- (a) This warranty is limited to the original Purchaser ("Purchaser") and is not transferable. REPAIR OR REPLACEMENT AS PROVIDED UNDER THIS WARRANTY IS THE EXCLUSIVE REMEDY OF THE PURCHASER. This warranty covers only those Products purchased from an authorized Horizon dealer. Third party transactions are not covered by this warranty. Proof of purchase is required for all warranty claims.
- (b) Limitations- HORIZON MAKES NO WARRANTY OR REPRESENTATION, EXPRESS OR IMPLIED, ABOUT NON-INFRINGEMENT, MERCHANTABILITY OR FITNESS FOR A PARTICULAR PURPOSE OF THE PRODUCT. THE PURCHASER ACKNOWLEDGES THAT THEY ALONE HAVE DETERMINED THAT THE PRODUCT WILL SUITABLY MEET THE REQUIREMENTS OF THE PURCHASER'S INTENDED USE.
- (c) Purchaser Remedy- Horizon's sole obligation hereunder shall be that Horizon will, at its option, (i) repair or (ii) replace, any Product determined by Horizon to be defective. In the event of a defect, these are the Purchaser's exclusive remedies. Horizon reserves the right to inspect any and all equipment involved in a warranty claim. Repair or replacement decisions are at the sole discretion of Horizon. This warranty does not cover cosmetic damage or damage due to acts of God, accident, misuse, abuse, negligence, commercial use, or modification of or to any part of the Product. This warranty does not cover damage due to improper installation, operation, maintenance, or attempted repair by anyone other than Horizon. Return of any Product by Purchaser must be approved in writing by Horizon before shipment.

### Damage Limits

HORIZON SHALL NOT BE LIABLE FOR SPECIAL, INDIRECT OR CONSEQUENTIAL DAMAGES, LOSS OF PROFITS OR PRODUCTION OR COMMERCIAL LOSS IN ANY WAY CONNECTED WITH THE PRODUCT, WHETHER SUCH CLAIM IS BASED IN CONTRACT, WARRANTY, NEGLIGENCE, OR STRICT LIABILITY. Further, in no event shall the liability of Horizon exceed the individual price of the Product on which liability is asserted. As Horizon has no control over use, setup, final assembly, modification or misuse, no liability shall be assumed nor accepted for any resulting damage or injury. By the act of use, setup or assembly, the user accepts all resulting liability.

If you as the Purchaser or user are not prepared to accept the liability associated with the use of this Product, you are advised to return this Product immediately in new and unused condition to the place of purchase.

Law: These Terms are governed by Illinois law (without regard to conflict of law principals).

## WARRANTY SERVICES

### Questions, Assistance, and Repairs

Your local hobby store and/or place of purchase cannot provide warranty support or repair. Once assembly, setup or use of the Product has been started, you must contact Horizon directly. This will enable Horizon to better answer your questions and service you in the event that you may need any assistance. For questions or assistance, please direct your email to [feedback@teamlosi.com](mailto:feedback@teamlosi.com), or call 888.899.LOSI (5674) toll free to speak to a Product Support representative. You may also find information on our website at [www.horizonhobby.com](http://www.horizonhobby.com).

### Inspection or Repairs

**If this Product needs to be inspected or repaired, please use the Horizon Online Repair Request submission process found on our website or call Horizon to obtain a Return Merchandise Authorization (RMA) number. Pack the Product securely using a shipping carton.** Please note that original boxes may be included, but are not designed to withstand the rigors of shipping without additional protection. Ship via a carrier that provides tracking and insurance for lost or damaged parcels, as Horizon is not responsible for merchandise until it arrives and is accepted at our facility. An Online Repair Request is available at [www.horizonhobby.com](http://www.horizonhobby.com) <http://www.horizonhobby.com> under the Repairs tab. If you do not have internet access, please contact Horizon Product Support to obtain a RMA number along with instructions for submitting your product for repair. When calling Horizon, you will be asked to provide your complete name, street address, email address and phone number where you can be reached during business hours. When sending product into Horizon, please include your RMA number, a list of the included items, and a brief summary of the problem. A copy of your original sales receipt must be included for warranty consideration. Be sure your name, address, and RMA number are clearly written on the outside of the shipping carton.

**Notice: Do not ship batteries to Horizon. If you have any issue with a battery, please contact the appropriate Horizon Product Support office.**

### Warranty Inspection and Repairs

To receive warranty service, you must include your original sales receipt verifying the proof-of-purchase date. Provided warranty conditions have been met, your Product will be repaired or replaced free of charge. Repair or replacement decisions are at the sole discretion of Horizon.

### Non-Warranty Repairs

Should your repair not be covered by warranty the repair will be completed and payment will be required without notification or estimate of the expense unless the expense exceeds 50% of the retail purchase cost. By submitting the item for repair you are agreeing to payment of the repair without notification. Repair estimates are available upon request. You must include this request with your repair. Non-warranty repair estimates will be billed a minimum of ½ hour of labor. In addition you will be billed for return freight. Horizon accepts money orders and cashiers checks, as well as Visa, MasterCard, American Express, and Discover cards. By submitting any item to Horizon for inspection or repair, you are agreeing to Horizon's Terms and Conditions found on our website under the Repairs tab.

Country of Purchase	Horizon Hobby	Address	Phone Number / Email Address
United States of America	Horizon Product Support	4105 Fieldstone Rd Champaign, Illinois 61822 USA	877-504-0233 productsupport@horizonhobby.com
United States of America	Horizon Service Center	4105 Fieldstone Rd Champaign, Illinois 61822 USA	877-504-0233 productsupport@horizonhobby.com
United Kingdom	Horizon Hobby Limited	Units 1-4 Ployters Rd Staple Tye Harlow, Essex CM18 7NS United Kingdom	+44 (0) 1279 641 097 sales@horizonhobby.co.uk
Germany	Horizon Technischer Service	Hamburger Str. 10 25335 Elmshorn Germany	+49 4121 46199 66 service@horizonhobby.de
France	Horizon Hobby SAS	14 Rue Gustave Eiffel Zone d'Activité du Réveil Matin 91230 Montgeron	+33 (0) 1 60 47 44 70

### **Instructions for Disposal of WEEE by Users in the European Union**



This product must not be disposed of with other waste. Instead, it is the user's responsibility to dispose of their waste equipment by handing it over to a designated collection point for the recycling of waste electrical and electronic equipment. The separate collection and recycling of your waste equipment at the time of disposal will help to conserve natural resources and ensure that it is recycled in a manner that protects human health and the environment. For more information about where you can drop off your waste equipment for recycling, please contact your local city office, your household waste disposal service or where you purchased the product.