

# MICRO RALLY CAR

## 1/24-SCALE ELECTRIC RTR 4WD RALLY CAR



### Replacement Parts for Micro Rally

LOS0817 Servo w/Servo Saver: Micro SCT, Rally  
LOS0843 AM Receiver/ESC Unit: Micro SCT, Rally  
LOS0846 4.8V 220mAh NiMH Pack: MC SCT, Rally  
LOS0879 Micro Wall Charger NiMH: Micro SCT, Rally  
LOS1523 Wheel Nuts  
LOS1584 Tires, Mounted, Black: Micro Rally  
LOS1586 Tires, Mounted, Gold: Micro Rally  
LOS1730 Bearing Set: Micro SCT, Rally  
LOS1740 Chassis Set: Micro SCT, Rally  
LOS1741 Suspension Arm Set: Micro SCT, Rally  
LOS1742 Spindles, Carriers, Hubs: Micro SCT, Rally  
LOS1743 Diff Covers & Shock Towers: Micro SCT, Rally  
LOS1744 Steering & Servo Saver Hardware: Micro SCT, Rally  
LOS1746 Bumper Set: Micro Rally  
LOS1747 Side Bumpers & Mounts: Micro SCT, Rally  
LOS1748 Main Drive Shaft & Hardware: Micro SCT, Rally  
LOS1749 Hinge Pin Kit: Micro SCT, Rally  
LOS1751 Motor: Micro SCT & Rally  
LOS1752 Pinion & Spur Set: Micro SCT, Rally  
LOS1754 Complete Front Gearbox: Micro SCT, Rally  
LOS1755 Complete Rear Gearbox: Micro SCT, Rally  
LOS1757 Diff Outdrive Set: Micro SCT, Rally  
LOS1758 Dogbone Set: Micro SCT, Rally  
LOS1759 Axle Set: Micro SCT, Rally  
LOS1760 Ring & Pinion Gear Set: Micro SCT, Rally  
LOS1762 Oil Filled Damper (Shock) Set: Micro SCT, Rally  
LOS1763 Damper Spring Set, Hard (4): Micro SCT, Rally  
LOS1764 Screw Set: Micro SCT, Rally  
LOS1786 1/24 4WD Rally Painted Body, Gray  
LOS1787 1/24 4WD Rally Painted Body, Orange  
LOS1788 1/24 4WD Rally Painted Body, Red  
LOS1789 1/24 4WD Rally Painted Body, Blue  
LOS1798 Micro Rally Decal Sheet Set  
LOS4605 Wrench Set: Micro SCT, Rally

### Option Parts

LOS1765 Damper Spring, Soft (4): Micro SCT, Rally  
LOS1766 Damper Spring, Medium (4): Micro SCT, Rally  
LOS1785 Micro Rally Body, Clear  
LOS9635 LiPo Charger & 7.4V 205mAh LiPo Battery Combo  
LOS9825 7.4V 250mAh LiPo: Micro SCT, Rally



**WWW.LOSI.COM**

©2010 Losi, a Division of Horizon Hobby, Inc.

### NOTICE

All instructions, warranties and other collateral documents are subject to change at the sole discretion of Horizon Hobby, Inc. For up-to-date product literature, visit <http://WWW.LOSI.COM/SUPPORT>.

### Meaning of Special Language

The following terms are used throughout the product literature to indicate various levels of potential harm when operating this product:

**NOTICE:** Procedures, which if not properly followed, create a possibility of physical property damage AND a little or no possibility of injury.

**WARNING:** Procedures, which if not properly followed, create the probability of property damage, collateral damage, and serious injury OR create a high probability of superficial injury.

**! WARNING:** Read the ENTIRE instruction manual to become familiar with the features of the product before operating. Failure to operate the product correctly can result in damage to the product, personal property and cause serious injury.

This is a sophisticated hobby product and NOT a toy. It must be operated with caution and common sense and requires some basic mechanical ability. Failure to operate this Product in a safe and responsible manner could result in injury or damage to the product or other property. This product is not intended for use by children without direct adult supervision. Do not attempt disassemble, use with incompatible components or augment product in any way without the approval of Horizon Hobby, Inc. This manual contains instructions for safety, operation and maintenance. It is essential to read and follow all the instructions and warnings in the manual, prior to assembly, setup or use, in order to operate correctly and avoid damage or serious injury.

# Operations Guide

## Introduction

Thank you for choosing the 1/24 Micro 4WD Rally Car. This guide contains the basic instructions for operating the vehicle. Read all of the instructions and all accompanying printed material in order to operate your model correctly and avoid unnecessary damage. Please take a moment to look them over before running your model.

**DO NOT RUN YOUR MICRO 4WD RALLY CAR ON PLUSH CARPET, GRASS OR SAND.**

**NOTICE:** Although the best materials and components are used, and due to the size of this model, using anything other than genuine Losi replacement and performance parts specifically designed for the Losi Micro 4WD Rally Car could cause damage.

### CONNECT - REGISTER - WIN

Register your product online so we can notify you about the latest option parts, product updates, tech tips, service bulletins and more. Visit [WWW.LOSI.COM](http://WWW.LOSI.COM) and follow the Product Registration link to stay connected.

For registering your Losi Product you will be automatically entered for a chance to win the Losi Pick Your Prize Sweepstakes. The winner will be allowed to select a total prize package of \$1,000 (retail value) based on their preference.

**[WWW.LOSI.COM/REGISTER](http://WWW.LOSI.COM/REGISTER)**

## Safety Guidelines and Warnings

**Age Recommendation: 14 years or over. This is not a toy. This product is not intended for use by children without direct adult supervision.** This is a sophisticated radio controlled model that must be operated with caution and common sense. Failure to operate your Micro 4WD Rally Car in a safe and responsible manner could result in damage to the model and property.

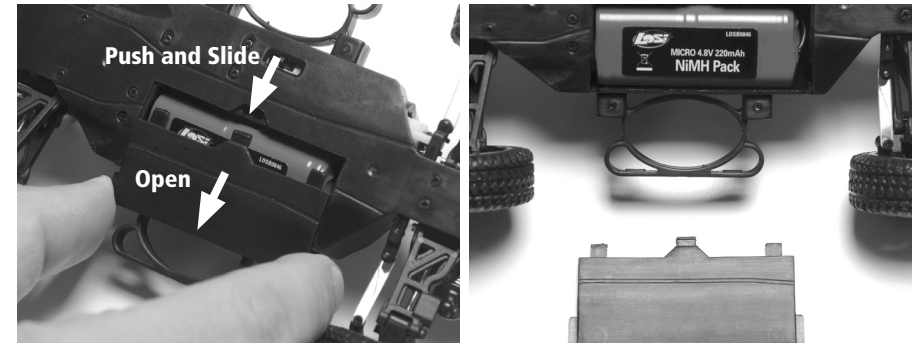
Losi and Horizon Hobby, Inc. shall not be liable for any loss or damages, whether direct, indirect, special, incidental, or consequential, arising from the use, misuse, or abuse of this product or any product required to operate it.

- This model is controlled by a radio signal that is subject to interference from many sources outside your control. This interference can cause momentary loss of control so it is advisable to always keep a safety margin in all directions to avoid collisions.
- Always operate your model in an open area away from cars, traffic and people.
- Never run out into the street for any reason.
- Never run your Micro 4WD Rally Car with low transmitter batteries.
- Carefully follow the directions and warnings for this and any optional support equipment that you use.
- Keep all chemicals, small parts and anything electrical out of the reach of children.
- Never leave vehicle on when not in use. By doing so, damage to the battery may occur.

### Tools and Items You Will Find Handy

- Soft bristle brush for cleaning
- Losi Micro Phillips Screwdriver - LOSB1602
- Losi Nutdriver: 4.5mm - LOSA99160
- Small flat blade screwdriver

1.



2. Plug the AC charger into the proper wall receptacle (110V - US version). Plug the battery pack into the charger and let it charge for 1 hour for the first time. Charge for 1 hour thereafter for a full charge. **Battery charged for over 1 hour may cause an overcharge.**



## Battery and Charging Guidelines and Warnings

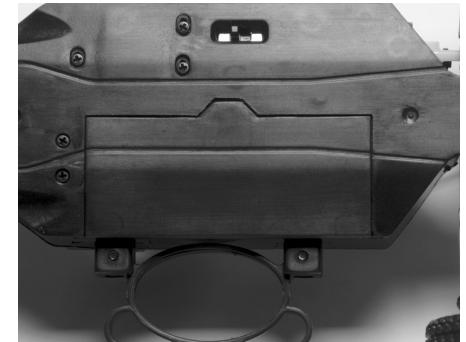
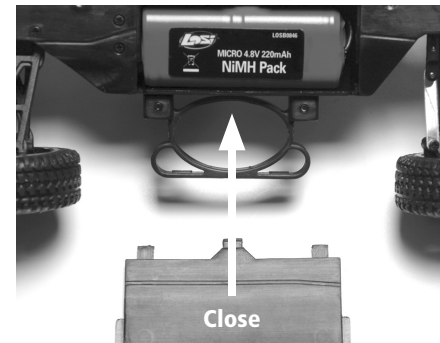
Failure to exercise caution while using this product and comply with the following warnings could result in product malfunction, electrical issues, excessive heat, FIRE, and ultimately injury and property damage.

- Read all safety precautions and literature prior to use of this product
- Never leave the battery and charger unattended during use
- Never allow minors to charge battery packs without adult supervision
- Never drop charger or batteries
- Never attempt to charge dead or damaged batteries
- Never charge a battery if the cable has been pinched or shorted
- Never allow batteries or charger to come into contact with moisture at any time
- Never charge batteries in extremely hot or cold places (recommended between 50–80 degrees Fahrenheit) or place in direct sunlight
- Always use only NiMH rechargeable batteries. This charger cannot charge batteries such as “heavy duty,” “alkaline battery,” or “mercury battery”
- Always connect the positive red lead (+) and negative black lead (-) terminals of the battery to the charge terminals correctly
- Always disconnect the battery and charger after charging and let them cool between charges
- Always inspect the battery before charging
- Always terminate all processes and contact Horizon Hobby if the product malfunctions
- Always make sure you know the specifications of the battery to be charged or discharged to ensure it meets the requirements of this charger
- Always constantly monitor the temperature of the battery pack while charging
- Always end the charging process if the charger or battery becomes hot to the touch or starts to change form during the charge process

3.



4. Plug battery in and reinsert into vehicle.



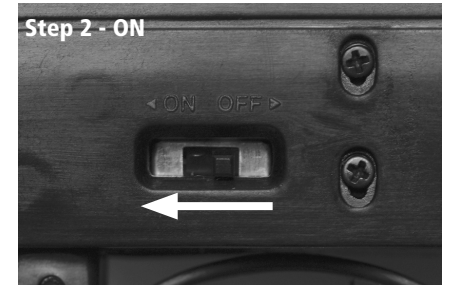
5.

Step 1 - ON



6.

Step 2 - ON



### Transmitter

**Steering Wheel:** Controls direction (left/right).

**Throttle Trigger:** Controls speed and direction (forward/reverse).

**Antenna:** Transmits signal to the model.

**On/Off Switch:** Turns the power on/off for the transmitter.

**Indicator Lights:** Green (right) light indicates adequate battery power. Red (left) indicates signal strength.

**ST. Trim:** Adjusts the “hands off” direction of the model.

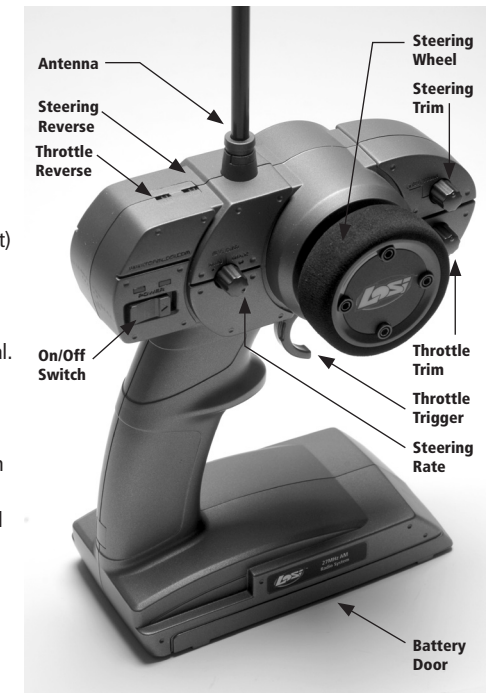
**TH. Trim:** Adjusts the motor speed to stop at neutral.

**Steering Rate:** Adjusts amount front wheels move when the steering wheel is turned left and right.

**ST. REV:** Reverses the function of the steering when the wheel is turned left or right.

**TH. REV:** Reverses the function of the speed control when pulled back or pushed forward.

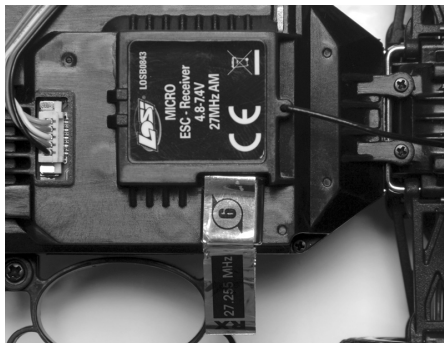
**Battery Door:** Covers and holds the batteries that power the transmitter.





## Changing Frequencies/Channels

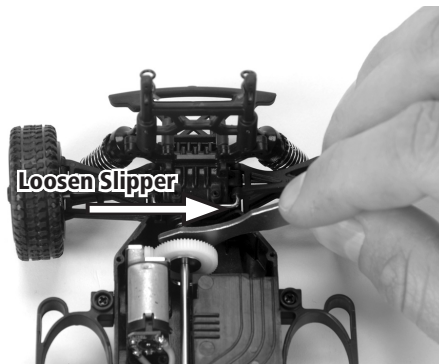
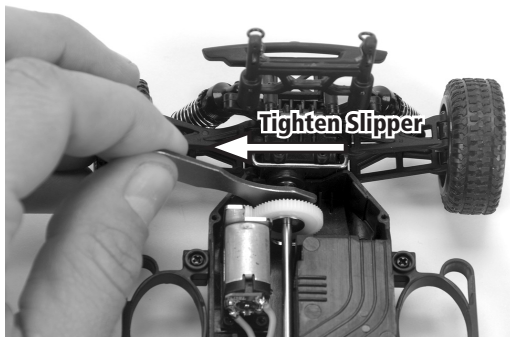
Channel 1 Brown 26.995MHz (LOS1094)  
Channel 2 Red 27.045MHz (LOS1095)  
Channel 3 Orange 27.095MHz (LOS1096)  
Channel 4 Yellow 27.145MHz (LOS1097)  
Channel 5 Green 27.195MHz (LOS1098)  
Channel 6 Blue 27.255MHz (LOS1099)



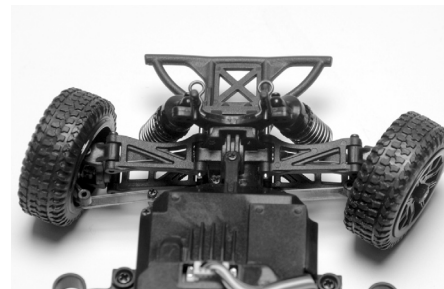
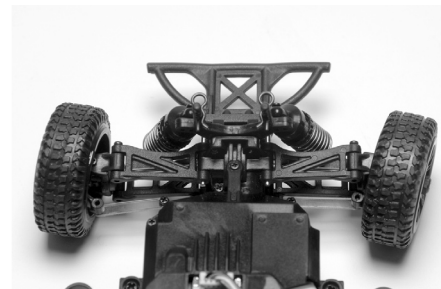
## Slipper Adjustments

Hold vehicle firmly in place so tires do not move. Tighten or loosen slipper. Slipper should slip 25 to 50mm during full throttle punch. Ensure slipper is fully functioning at all times.

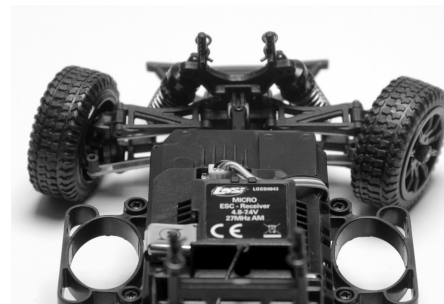
**⚠ CAUTION:** It is very important for the slipper to function. If the slipper does not function there is a high chance of drivetrain failure



## Steering Rate

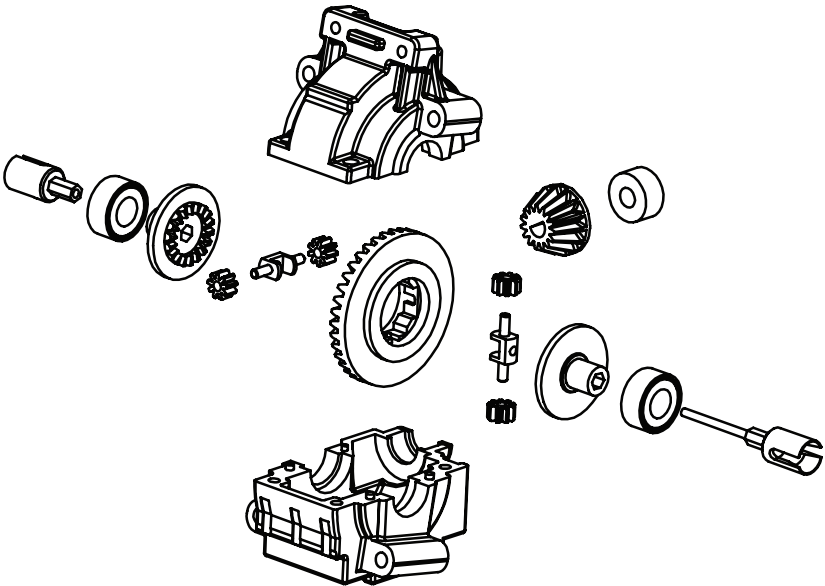


## Steering Trim

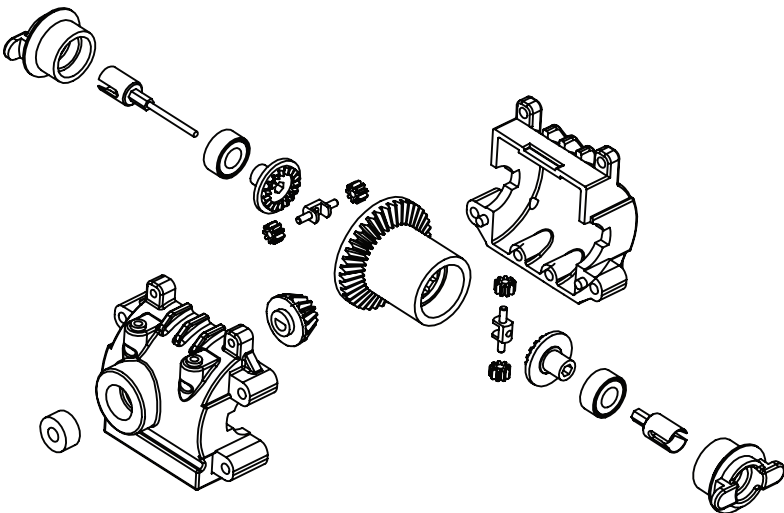


Rebuilding the Differential

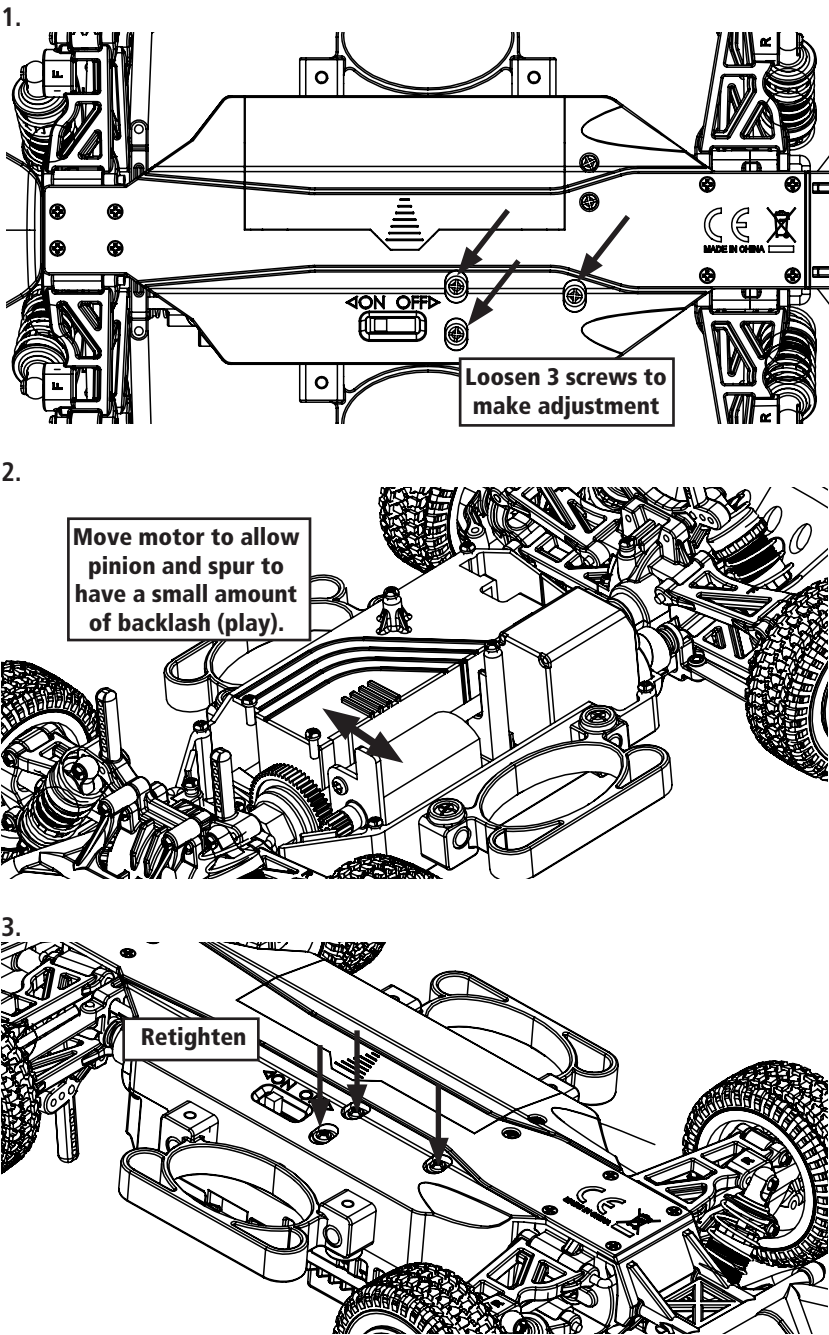
Front Differential—See page 14 for part numbers



Rear Differential—See page 15 for part numbers



Setting Gear Mesh

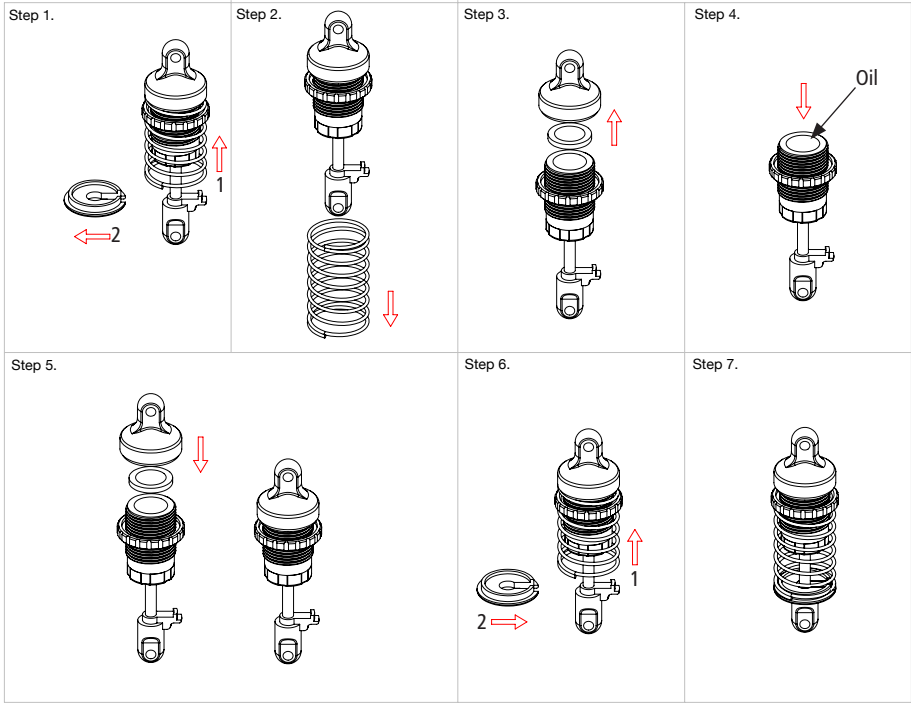


**Gear Ratio**

Stock Gearing:  
Pinion 12T  
Spur Gear 58T

Gear Chart			
Micro 4wd	Spur		
	54	58	
	10	14.0	15.1
	12	11.7	12.6
	14	10.0	10.8

**Shock Rebuild**



**Warranty and Repair Policy**

**Warranty Period**

Exclusive Warranty- Horizon Hobby, Inc., (Horizon) warranties that the Products purchased (the "Product") will be free from defects in materials and workmanship at the date of purchase by the Purchaser.

**Limited Warranty**

Horizon reserves the right to change or modify this warranty without notice and disclaims all other warranties, express or implied.

(a) This warranty is limited to the original Purchaser ("Purchaser") and is not transferable. REPAIR OR REPLACEMENT AS PROVIDED UNDER THIS WARRANTY IS THE EXCLUSIVE REMEDY OF THE PURCHASER. This warranty covers only those Products purchased from an authorized Horizon dealer. Third party transactions are not covered by this warranty. Proof of purchase is required for all warranty claims.

(b) Limitations- HORIZON MAKES NO WARRANTY OR REPRESENTATION, EXPRESS OR IMPLIED, ABOUT NON-INFRINGEMENT, MERCHANTABILITY OR FITNESS FOR A PARTICULAR PURPOSE OF THE PRODUCT. THE PURCHASER ACKNOWLEDGES THAT THEY ALONE HAVE DETERMINED THAT THE PRODUCT WILL SUITABLY MEET THE REQUIREMENTS OF THE PURCHASER'S INTENDED USE.

(c) Purchaser Remedy- Horizon's sole obligation hereunder shall be that Horizon will, at its option, (i) repair or (ii) replace, any Product determined by Horizon to be defective. In the event of a defect, these are the Purchaser's exclusive remedies. Horizon reserves the right to inspect any and all equipment involved in a warranty claim. Repair or replacement decisions are at the sole discretion of Horizon. This warranty does not cover cosmetic damage or damage due to acts of God, accident, misuse, abuse, negligence, commercial use, or modification of or to any part of the Product. This warranty does not cover damage due to improper installation, operation, maintenance, or attempted repair by anyone other than Horizon. Return of any Product by Purchaser must be approved in writing by Horizon before shipment.

**Damage Limits**

HORIZON SHALL NOT BE LIABLE FOR SPECIAL, INDIRECT OR CONSEQUENTIAL DAMAGES, LOSS OF PROFITS OR PRODUCTION OR COMMERCIAL LOSS IN ANY WAY CONNECTED WITH THE PRODUCT, WHETHER SUCH CLAIM IS BASED IN CONTRACT, WARRANTY, NEGLIGENCE, OR STRICT LIABILITY. Further, in no event shall the liability of Horizon exceed the individual price of the Product on which liability is asserted. As Horizon has no control over use, setup, final assembly, modification or misuse, no liability shall be assumed nor accepted for any resulting damage or injury. By the act of use, setup or assembly, the user accepts all resulting liability. If you as the Purchaser or user are not prepared to accept the liability associated with the use of this Product, you are advised to return this Product immediately in new and unused condition to the place of purchase. **Law: These Terms are governed by Illinois law (without regard to conflict of law principals).**

**WARRANTY SERVICES**

**Questions, Assistance, and Repairs**

Your local hobby store and/or place of purchase cannot provide warranty support or repair. Once assembly, setup or use of the Product has been started, you must contact Horizon directly. This will enable Horizon to better answer your questions and service you in the event that you may need any assistance. For questions or assistance, please direct your email to [productsupport@horizonhobby.com](mailto:productsupport@horizonhobby.com), or call 877.504.0233 toll free to speak to a Product Support representative. You may also find information on our website at [www.horizonhobby.com](http://www.horizonhobby.com).

**Inspection or Repairs**

If this Product needs to be inspected or repaired, please use the Horizon Online Repair Request submission process found on our website or call Horizon to obtain a Return Merchandise Authorization (RMA) number. Pack the Product securely using a shipping carton. Please note that original boxes may be included, but are not designed to withstand the rigors of shipping without additional protection. Ship via a carrier that provides tracking and insurance for lost or damaged parcels, as Horizon is not responsible for merchandise until it arrives and is accepted at our facility. An Online Repair Request is available at [www.horizonhobby.com](http://www.horizonhobby.com) <http://www.horizonhobby.com> under the Repairs tab. If you do not have internet access, please contact Horizon Product Support to obtain a RMA number along with instructions for submitting your product for repair. When calling

Horizon, you will be asked to provide your complete name, street address, email address and phone number where you can be reached during business hours. When sending product into Horizon, please include your RMA number, a list of the included items, and a brief summary of the problem. A copy of your original sales receipt must be included for warranty consideration. Be sure your name, address, and RMA number are clearly written on the outside of the shipping carton.

**Notice:** Do not ship batteries to Horizon. If you have any issue with a battery, please contact the appropriate Horizon Product Support office.

Warranty Inspection and Repairs

To receive warranty service, you must include your original sales receipt verifying the proof-of-purchase date. Provided warranty conditions have been met, your Product will be repaired or replaced free of charge. Repair or replacement decisions are at the sole discretion of Horizon.

Non-Warranty Repairs

Should your repair not be covered by warranty the repair will be completed and payment will be required without notification or estimate of the expense unless the expense exceeds 50% of the retail purchase cost. By submitting the item for repair you are agreeing to payment of the repair without notification. Repair estimates are available upon request. You must include this request with your repair. Non-warranty repair estimates will be billed a minimum of ½ hour of labor. In addition you will be billed for return freight. Horizon accepts money orders and cashiers checks, as well as Visa, MasterCard, American Express, and Discover cards. By submitting any item to Horizon for inspection or repair, you are agreeing to Horizon’s Terms and Conditions found on our website under the Repairs tab.

Country of Purchase	Horizon Hobby	Address	Phone Number/Email
United States	Horizon Service Center (Electronics and engines)	4105 Fieldstone Rd, Champaign, IL 61822 USA	877-504-0233 productsupport@horizonhobby.com
	Horizon Product Support (All other products)	4105 Fieldstone Rd, Champaign, IL 61822 USA	877-504-0233 productsupport@horizonhobby.com
United Kingdom	Horizon Hobby Limited	Units 1-4 Ployters Rd. Staple Tye Harlow, Essex CM18 7NS United Kingdom	+44 (0) 1279 641 097 sales @horizonhobby.co.uk
Germany	Horizon Technischer Service	Hamburger Str. 10 25335 Elmshorn Germany	+49 4 121 46199 66 service@horizonhobby.de
France	Horizon Hobby SAS	14 Rue Gustave Eiffel Zone d’Activité du Révell Marin 91230 Montgeron	+33 (0) 1 60 47 44 70

Compliance Information for the European Union



Declaration of Conformity

(in accordance with ISO/IEC 17050-1)

No. HH2010053002

Product(s): 1/24 4WD Rally Car  
Item Number(s): LOSB02411

Equipment class: 1

The object of declaration described above is in conformity with the requirements of the specifications listed below, following the provisions of the European R&TTE directive 1999/5/EC:

EN 300-220 Technical requirements for Radio equipment.  
EN 301 489-1, 301 489-17 General EMC requirements  
EN 60950 Safety

Signed for and on behalf of:

Horizon Hobby, Inc.  
Champaign, IL USA  
May 30, 2010

Steven A. Hall  
Vice President  
International Operations and Risk Management  
Horizon Hobby, Inc.

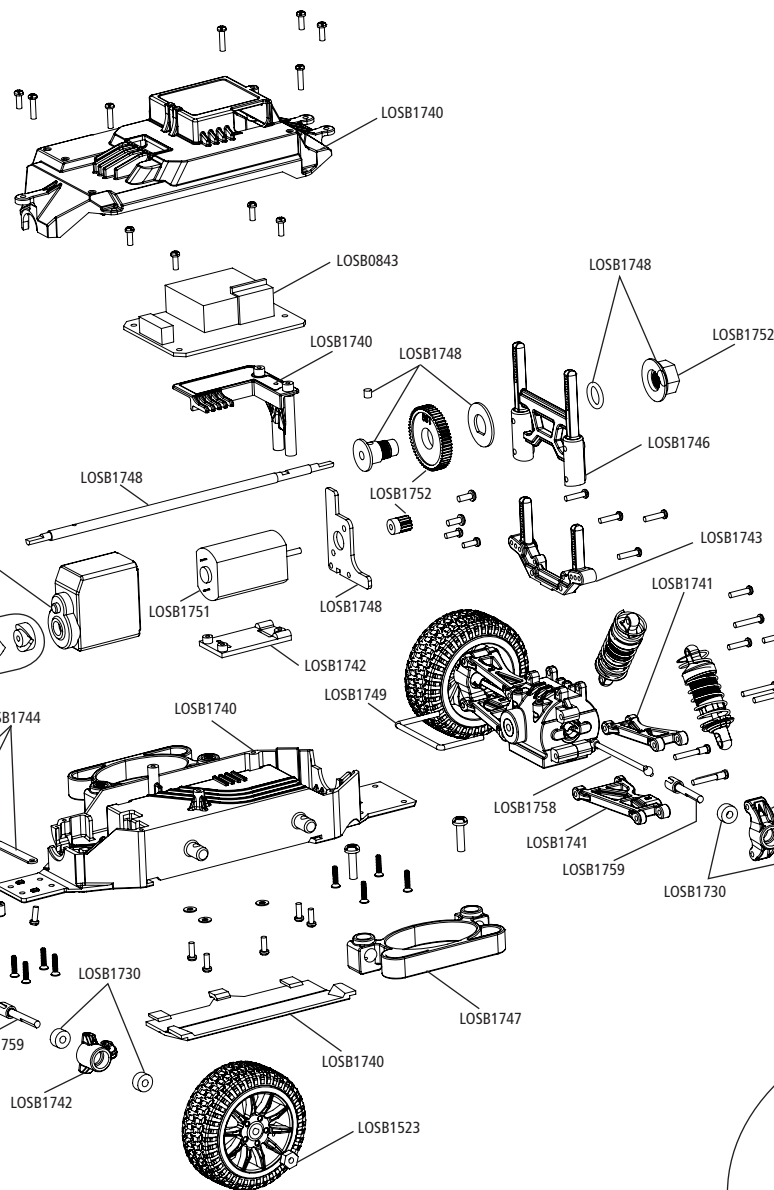
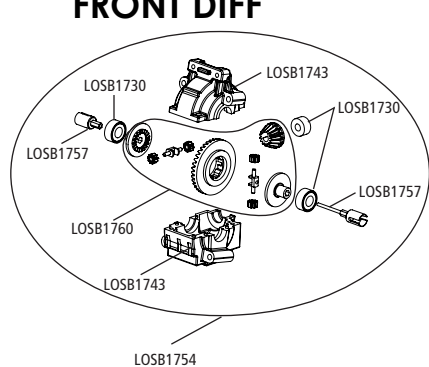


Instructions for Disposal of WEEE by Users in the European Union

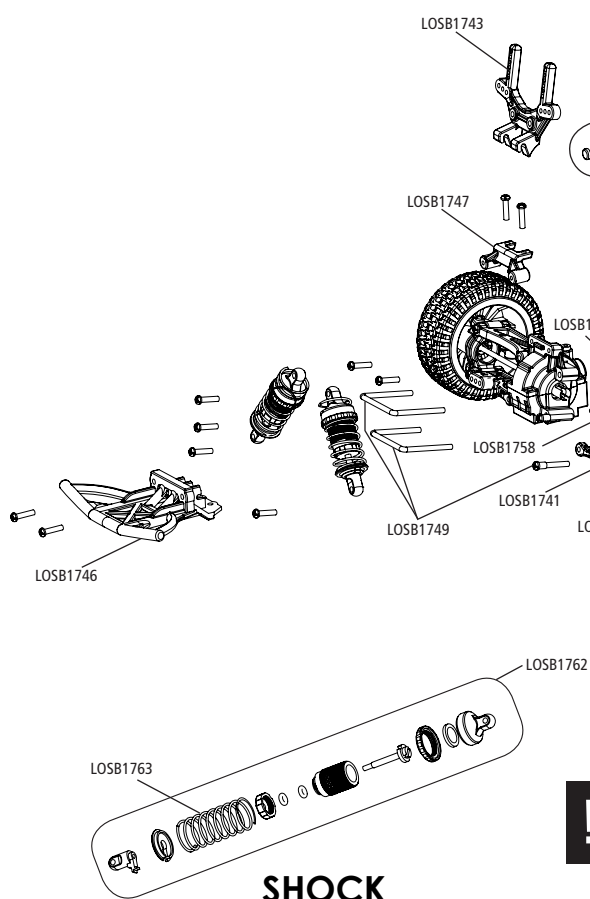
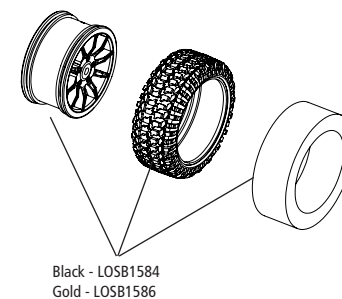
This product must not be disposed of with other waste. Instead, it is the user’s responsibility to dispose of their waste equipment by handing it over to a designated collection point for the recycling of waste electrical and electronic equipment. The separate collection and recycling of your waste equipment at the time of disposal will help to conserve natural resources and ensure that it is recycled in a manner that protects human health and the environment. For more information about where you can drop off your waste equipment for recycling, please contact your local city office, your household waste disposal service or where you purchased the product.



## FRONT DIFF



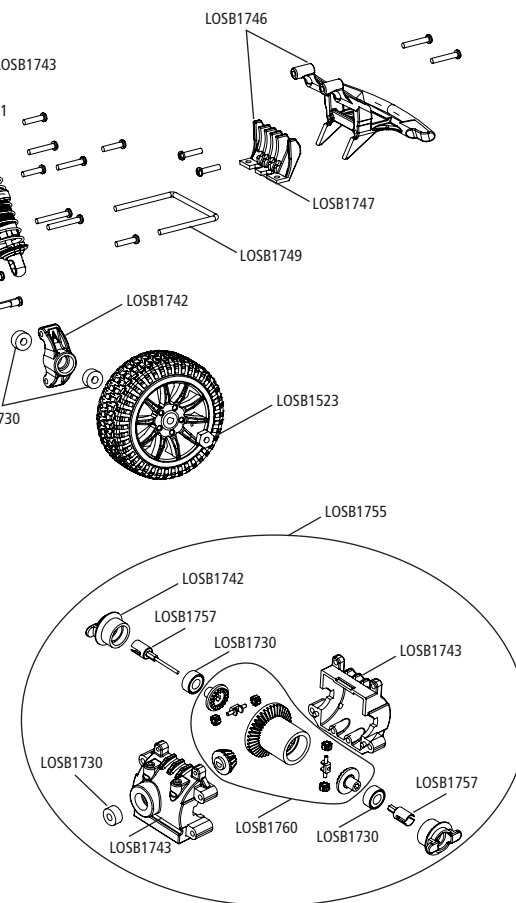
## WHEEL



## SHOCK

LOS1764: Screw Set

! Unless otherwise noted, all screws, fasteners, and associated hardware are contained in LOS1764.



## REAR DIFF