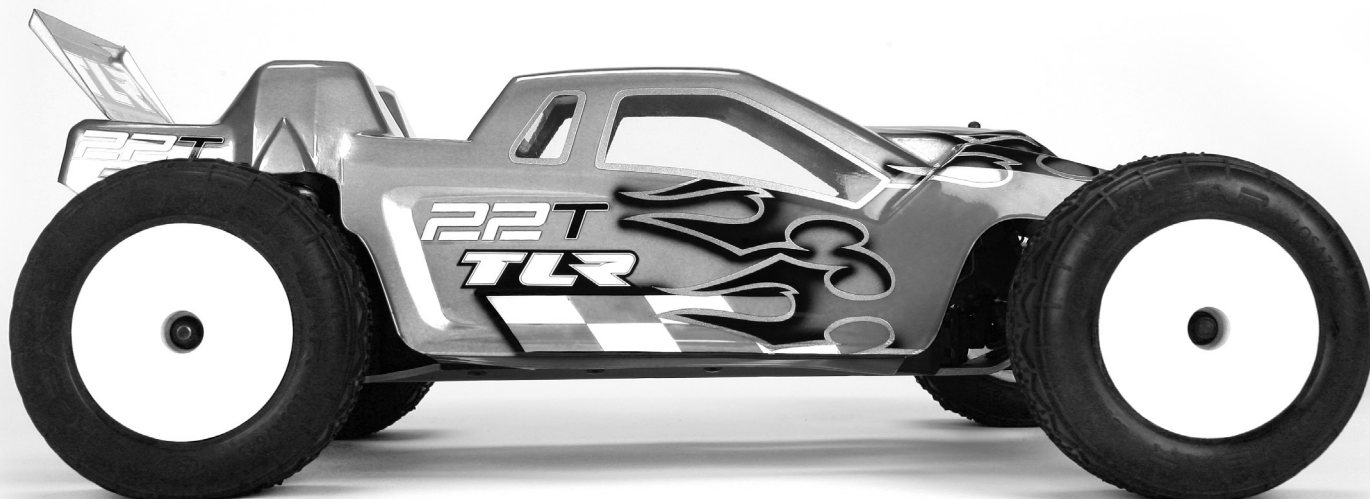
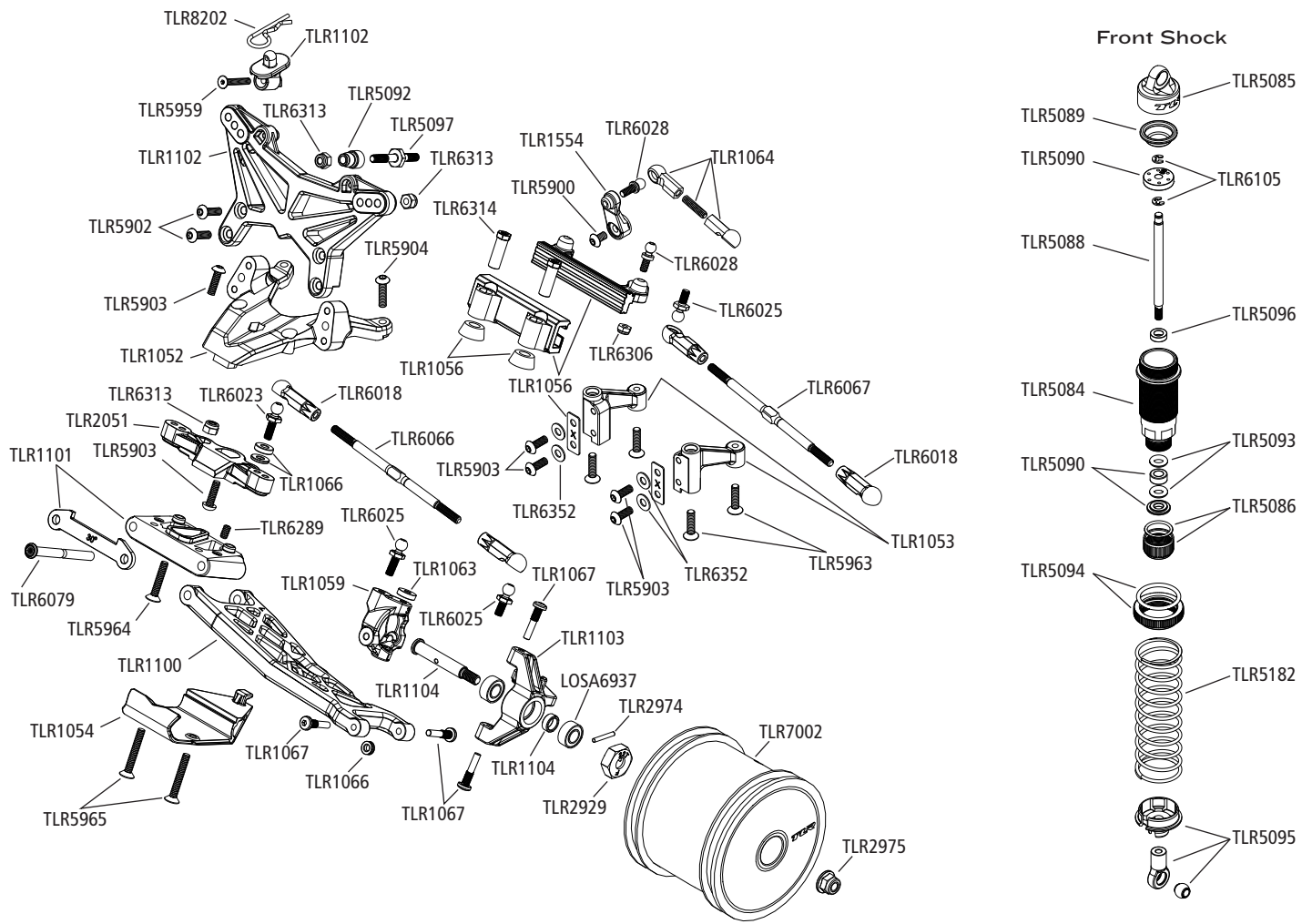


RRT™ TWENTY TWO

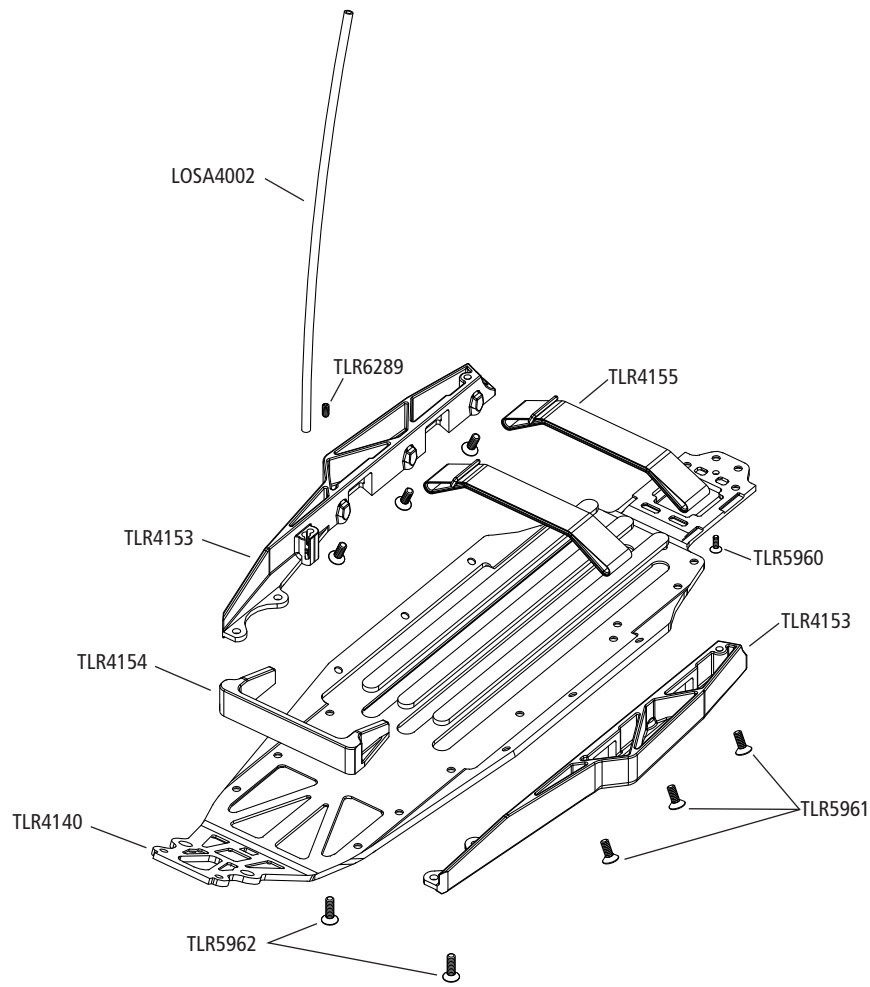


(R)evolution | EVOLUTION MEETS REVOLUTION

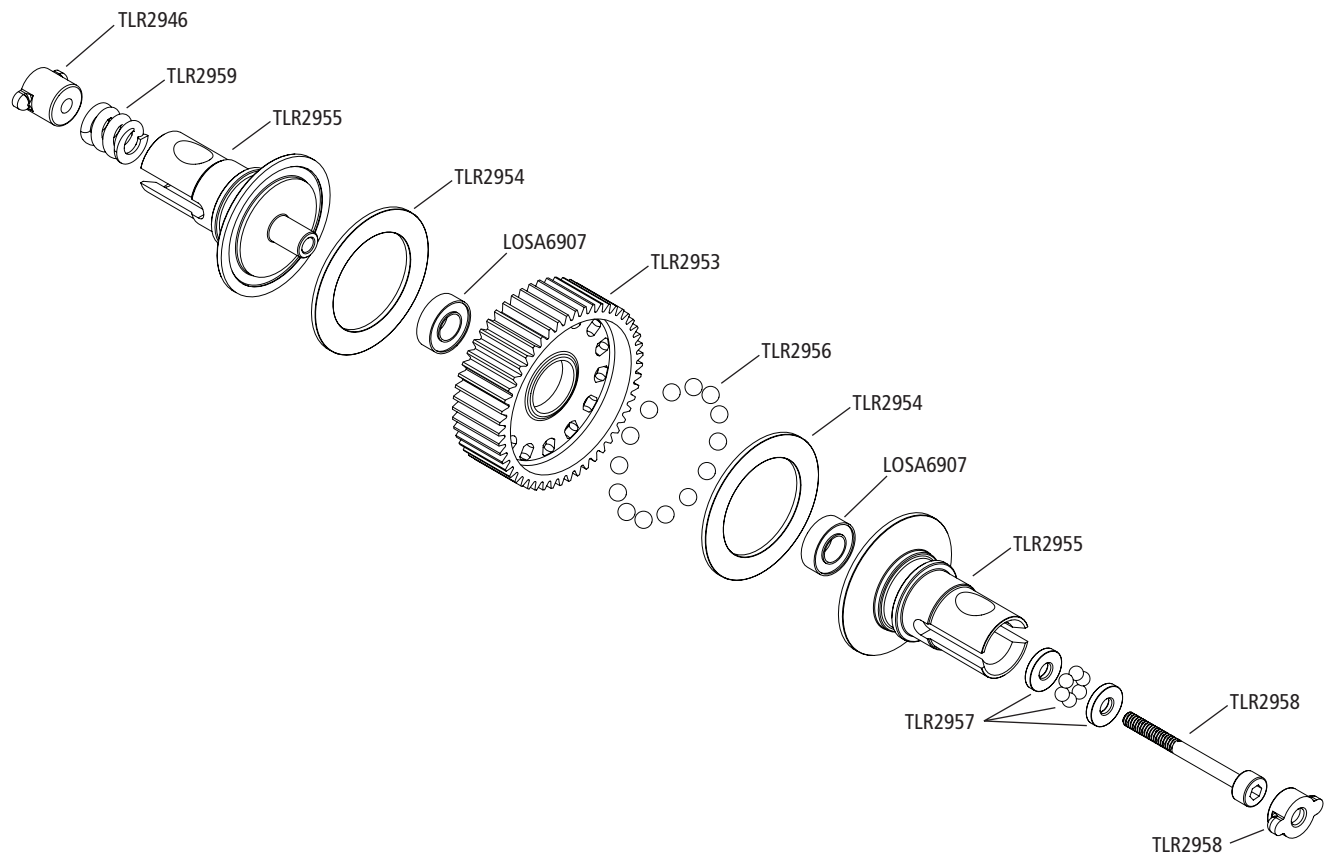
Part #	English	Deutsch	Français	Italiano	Español
LOSA3123	Slipper Friction Pad	Gleitbremsbelag	Patin d'embrayage à friction	Pastiglia pattino	Zapatas de fricción del slipper
LOSA3983	82T 48 Pitch Kevlar Spur Gear	82T 48 Zahn Kevlar Zahnrad	Couronne en Kevlar 82T 48dp	82T 48 Ingranaggio Pitch Kevlar	Corona 82T 48 de Kevlar
LOSA4002	Antenna Kit	Antennenbausatz	Kit d'antenne	Kit dell'antenna	Kit de antena
LOSA6306	4-40 Aluminum Mini-Nuts (10)	4-40 Mnimuttern, Aluminium (10)	Ecrous freins 4-40 Aluminium (10)	4-40 Mini dai in alluminio (10)	Mini tuercas de aluminio 4-40 (10)
LOSA6907	5x8mm Ball Bearings (2)	Kugellager 5 x 8 mm (2)	Roulements à billes 5x8 mm (2)	5x8mm Cuscinetti a sfera (2)	Rodamientos 5x8mm (2)
LOSA6937	5x10mm Ball Bearings (2)	Kugellager 5 x 10 mm (2)	Roulements à billes 5x10 mm (2)	5x10mm Cuscinetti a sfera (2)	Rodamientos 5x10mm (2)
LOSA6943	10x15mm Ball Bearings (2)	Kugellager 10 x 15 mm (2)	Roulements à billes 10x15 mm (2)	10x15mm Cuscinetti a sfera (2)	Rodamientos 10x15mm (2)
LOSA6955	5 x 13mm Ball Bearings (2)	Kugellager 5 x 13 mm (2)	Roulements à billes 5 x 13 mm (2)	5 x 13mm Cuscinetti a sfera (2)	Rodamiento 5x13mm (2)
TLRI052	Front Bulkhead, 22	Vordere Spritzwand, 22	Cloison AV, 22	Paratia anteriore, 22	Tabica delantera. 22
TLRI053	Front Servo Mount/Chassis Brace, 22	Vordere Hilfsbefestigung/Fahrgestellklammer, 22	Support de servo/renfort de châssis AV, 22	Montaggio anteriore / staffa chassis, 22	Protectores laterals del chasis y placa delantera, 22
TLRI054	Front Bumper, 22	Frontstoßstange, 22	Pare-choc AV, 22	Paraurti anteriore, 22	Parachoques delan-tero, 22
TLRI056	Steering Rack/Rack Housing & Spacers, 22	Zahnstange/Lenkgehäuse u. Abstandhalter, 22	Paliers de direction/logement de paliers & rondelles, 22	Rack di sterzata /Rack alloggiamento & distanziatori, 22	Cremallera de dirección/ Soporte y espaciadores, 22
TLRI059	Caster Block, 3°, 22	Lenkrollensperre, 3°, 22	Block de chasse, 3°, 22	Blocco ruote, 3°, 22	Mangueta, 3°, 22
TLRI063	Spindle/Caster Block Shim set	Achsschenkel-/Lenkrollensperren-Scheibensatz	Jeu de cales de fusée/blocks de chasse	Set alberino / Distanziatore blocco ruote	Kit de arandelas de cáster para las manguetas
TLRI064	Plastic Ball Cup, Short, 30 Degree	Kunststoffkugelpfanne, kurz, 30 Grad	Coupele de rotule plastique, courte, 30 degrés	Copertura in plastica, corta, 30 gradi	Bolas de plástico, Cortas, 30 Grados



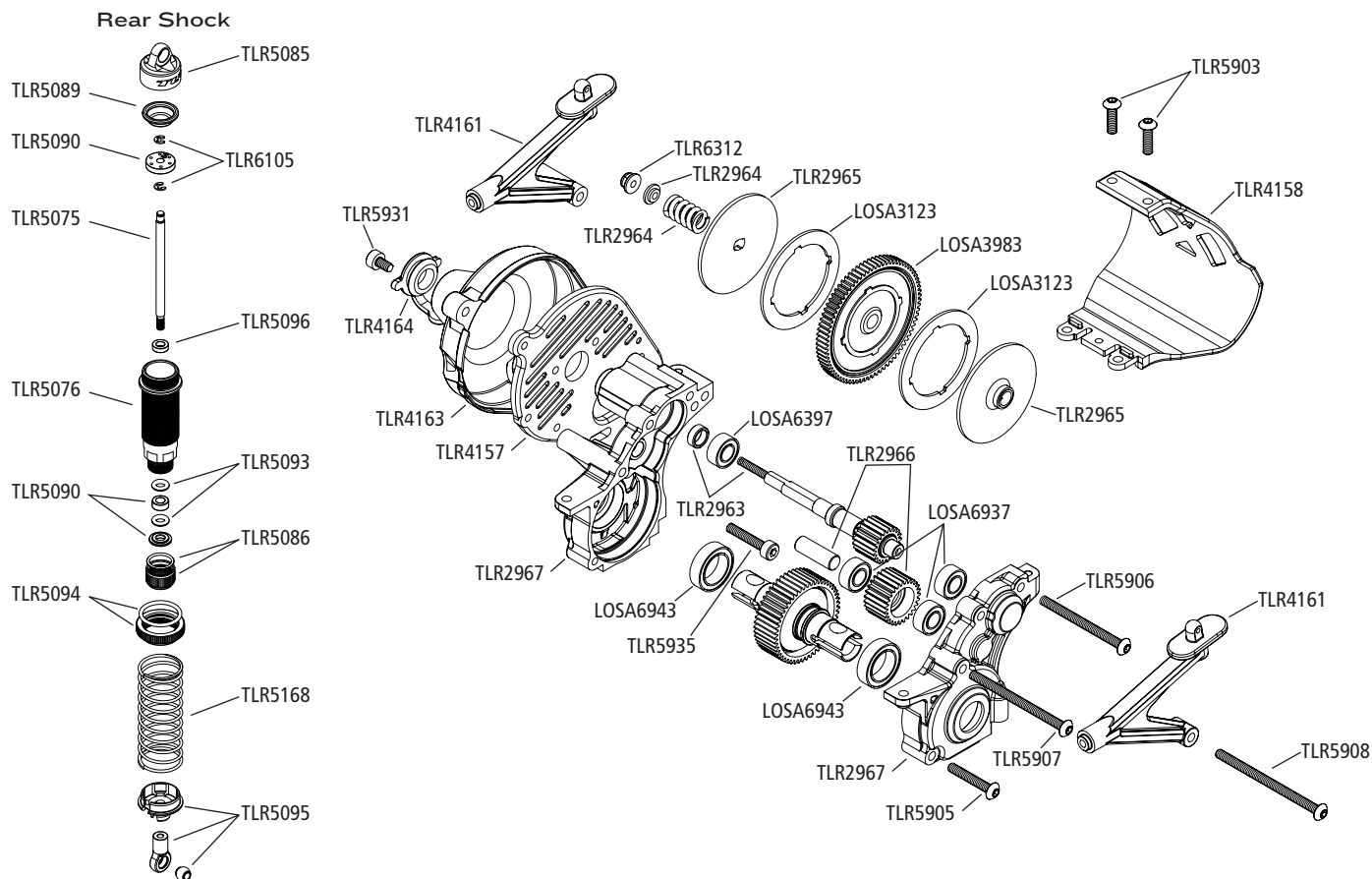
Part #	English	Deutsch	Français	Italiano	Español
TLR1065	Front and Rear Hinge Pin Brace, 22	Gelenkbolzenanker, vorne und hinten, 22	Renfort de fusée AV et AR, 22	Staffe del cardine anteriori e posteriori, 22	Placa soporte pasadores delanteros y traseros, 22
TLR1066	Ball Stud/Hub Spacer Set, 22	Kugelfassungen-/Nabenabstandhaltersatz, 22	Jeu de goujon à rotule/rondelle de fusée, 22	Perno della sfera / Set distanzziatore, 22	Bolas/Espaciadores, 22
TLR1067	King Pin Screw, 22 (8)	Achsschenkelbolzenschraube, 22 (8)	Vis de broche de fusée, 22 (8)	Vite King pin, 22 (8)	Tornillo de King Pin, 22 (8)
TLR1100	Front Arm Set, 22T	Querlenker vorne, 22T	Jeu de bras AV, 22T	Set braccio anteriore, 22T	Trapezios delanteros, 22T
TLR1101	Front Pivot & Brace, 30 Degree, 22T & 22	Querlenkerhalter vorne 30° 22T & 22	Axe avant et renfort, 30°, 22T, 22	Perno e supporto anteriore, 30 gradi, 22T & 22	Placa y soporte trapezios delanteros 30°, 22T y 22
TLR1102	Shock Tower & Body Mounts, Front, 22T	Dämpferbrücke & Karosseriehalter	Support d'amortisseur et de carrosserie avant, 22T	Supporti per ammortizzatore anteriore, 22T	Torreta y soportes de carrocería, delanteros, 22T
TLR1103	Spindle Set, Inline, 22T	Radträger, Inline: 22T	Set de fusées, en ligne, 22T	Set perni, in linea, 22T	Manguetas en línea, 22T
TLR1104	Front Axle, 22T (2)	Vorderachse, 22T (2)	Axe AV, 22T (2)	Assale anteriore, 22T (2)	Eje delantero, 22T (2)
TLR1554	Servo Horn Set, Steering, 22	Servohupensatz, Lenkung, 22	Jeu de bras de servo, direction, 22	Set Servo Horn, sterzo, 22	Kit brazos de servo, Dirección, 22
TLR2044	Anti-Squat Tuning Set, LRC, 22	Anti-Squat-Tuningsatz, LRC, 22	Jeu d'optimisation d'anticabrage, LRC, 22	Set impostazione anti-squat, LRC, 22	Kit de ajuste de Anti-squat, LRC, 22
TLR2046	Plastic Nut, Rear Inner Hinge Pin Brace, 22	Kunststoffmutter, Gelenkbolzenanker hinten innen, 22	Écrou plastique, pivot AR intérieur, 22	Dado in plastica, staffa del cardine interna posteriore, 22	Tuerca de plástico, soporte de pasador interior trasero, 22
TLR2048	Pivot Ball, Rear Inner Hinge Pin, 22	Kugelfassung, Gelenkbolzen hinten innen, 22	Bille pivot, pivot AR intérieur, 22	Sfera del perno, perno del cardine interno posteriore, 22	Pivot Ball, pasador interior trasero, 22
TLR2051	Front & Rear Camber Block Kit, 22	Spurklotzsatz vorne u. hinten, 22	Kit de blocage de cambrure AV & AR, 22	Kit bloccaggio camber anteriore & posteriore, 22	Kit de bloques de camber delantero y trasero, 22
TLR2052	Rear Hub & Hex, 22 (2)	Hintere Nabe u. Sechskant, 22 (2)	Fusée & vis hex AR, 22 (2)	Mozzo posteriore & dado, 22 (2)	Mangueta trasera & Hexágono, 22 (2)



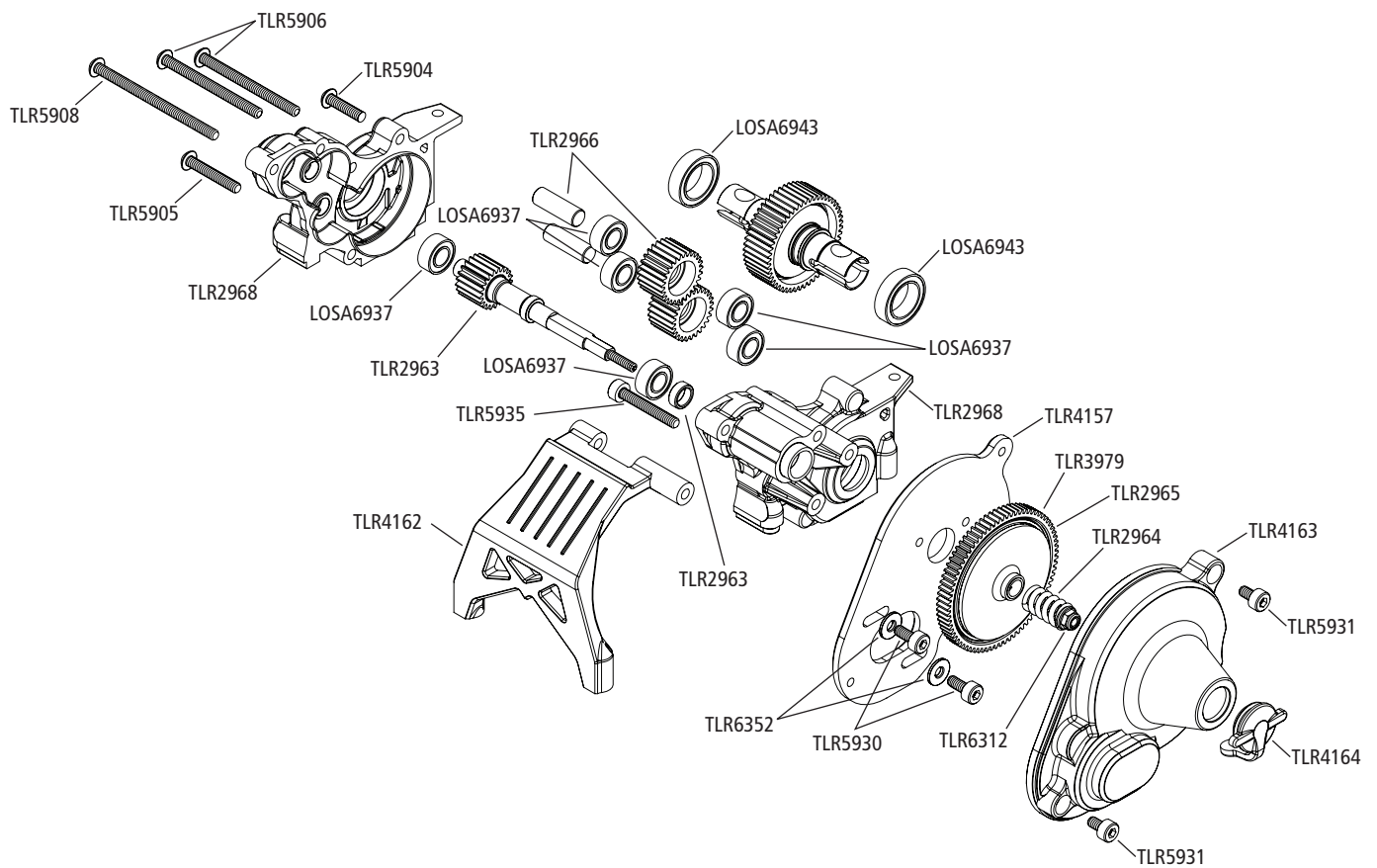
Part #	English	Deutsch	Français	Italiano	Español
TLR2054	Rear Outer Hinge pin, 22 (2)	Gelenkbolzen hinten außen, 22 (2)	Broche d'axe extérieur AR, 22 (2)	Perno esterno per cardini, 22 (2)	Pasador trasero exterior, 22 (2)
TLR2055	Rear Inner Hinge pin, 22 (2)	Gelenkbolzen hinten innen, 22 (2)	Broche d'axe intérieur AR, 22 (2)	Perno interno per cardini, 22 (2)	Pasador trasero interior, 22 (2)
TLR2100	Rear Arm Set, 22T	Querlenker hinten, 22T	Jeu de bras AR, 22T	Set braccio posteriore, 22T	Juego de trapecios traseros, 22T
TLR2101	Rear Shock Tower, Rear Engine, 22T	Hinterer Dämpferdom, Heckmotor, 22T	Support d'amortisseur AR, moteur AR, 22T	Torre ammortizzatore posteriore, motore posteriore, 22T	Torreta trasera, Motor trasero, 22T
TLR2102	Rear Shock Tower, Mid Engine, 22T	Hinterer Dämpferdom, Mittelmotor, 22T	Support d'amortisseur AR, moteur Centre, 22T	Torre ammortizzatore posteriore, motore mediano, 22T	Torreta trasera, Motor central, 22T
TLR2926	Driveshaft Set, Complete (2) 22T	Antriebswellen Set, Komplet: 22T	Set de cardans, complet (2) 22T	Set semiasse, completo (2) 22T	Cárdan completo (2) 22T
TLR2927	Driveshaft Set, (2) 22T	Antriebswellen Set (2): 22T	Set de cardans, (2) 22T	Set semiassi, (2) 22T	Cárdan (2), 22T
TLR2928	Rear Axles, (2) 22T	Radachse Hinten (2): 22T	Axes de roues, arrière (2) 22T	Assali posteriori, (2) 22T	Ejes traseros (2) 22T
TLR2929	Front and Rear Wheel Hex, 22T	Mitnehmer Vorne/Hinten: 22T	Hexagone de roues av/arr, 22T	Ruota anteriore e posteriore Hex, 22T	Hexágono de rueda delantero y trasero, 22T
TLR2946	Diff Nut, Gen II, 22	Mutterhalter f. Diff-einstellung	Noix de diff, Gen II, 22	Dado Diff, Gen II, 22	Tuerca de diferencial, Gen II, 22
TLR2952	Silicone Diff Grease, 8cc, 22	Silikon Differenzial Schmierfett, 8cc, 22	Graisse de différentiel silicone, 8cc, 22	Grasso silicone differenziale, 8cc, 22	Grasa de silicón diferencial, 8cc, 22
TLR2953	Diff Gear, 5IT, 22	Differenzial, 5IT, 22	Couronne de différentiel, 5I dents, 22	Ingranaggio differenziale, 5IT, 22	Corona de diferencial, 5IT, 22
TLR2954	Drive Rings, 22 (2)	Antriebsringe, 22 (2)	Couronne de transmission, 22 (2)	Anelli della trasmissione, 22 (2)	Pistas de diferencial, 22 (2)
TLR2955	Outdrive Set, 22	Abtriebssatz, 22	Jeu de cardan, (22)	Set bicchierini, 22	Vasos de diferencial, 22



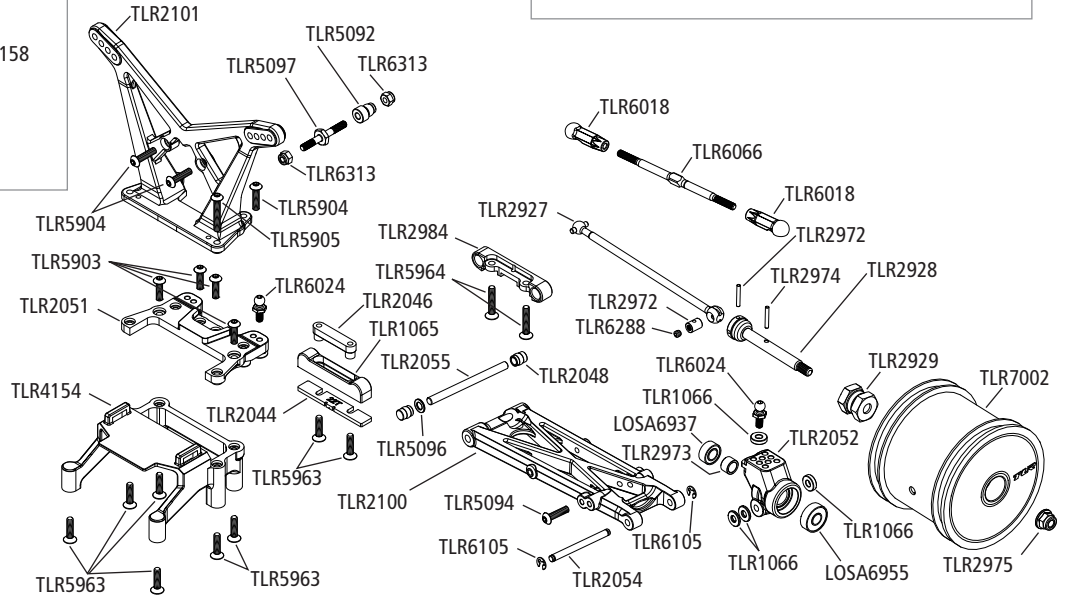
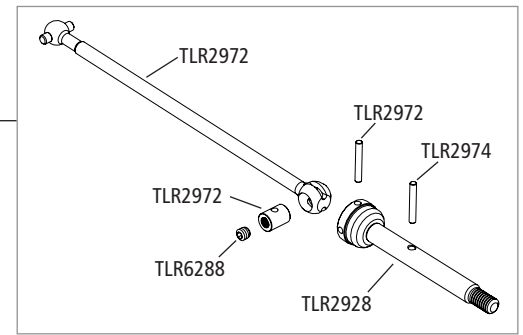
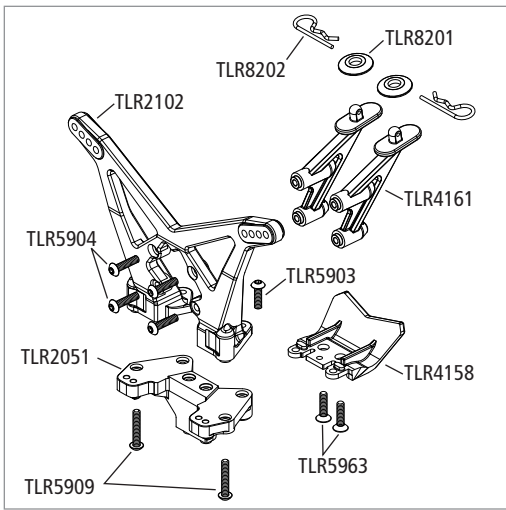
Part #	English	Deutsch	Français	Italiano	Español
TLR2956	Diff Ball Set, Hard (14)	Differenzial-Kugelsatz, hart (14)	Jeu de billes de différentiel, dur (14)	Set sfera differenziale, rigida (14)	Bolas de diferencial, Duras (14)
TLR2957	Diff Thrust Assembly, 22	Differenzialschub-Baugruppe, 22	Ensemble billes et rondelles différentiel, 22	Montaggio diff., 22	Axial, 22
TLR2958	Diff Through Screw and Nut, 22	Durchgangsschraube u. -mutter, Differenzial, 22	Vis et écrou traversant de différentiel, 22	Vite passante e dado diff., 22	Tornillo pasante y tuerca del diferencial, 22
TLR2959	Diff Spring, 22 (1)	Differenzialfeder, 22 (1)	Ressort de différentiel, 22 (1)	Molla differenziale, 22 (1)	Muelle del diferencial, 22 (1)
TLR2962	Diff Service Kit, 22	Wartungssatz, Differenzial, 22	Kit d'entretien de différentiel, 22	Kit servizio diff., 22	Kit de reparación del diferencial, 22
TLR2963	Layshaft & Spacer, 22	Zwischenwelle u. Abstandhalter, 22	Arbre secondaire & entretoise, 22	Supporto & distanziatore, 22	Eje transmisión & Espaciador, 22
TLR2964	Slipper Spring, 22	Gleitfeder, 22	Ressort d'ensemble patinant, 22	Anello di scorrimento, 22	Muelle del slipper, 22
TLR2965	Slipper Plates, 22, all XXX (2)	Gleitbleche, 22, alle XXX (2)	Plateaux d'embrayage patinant, 22, tous XXX (2)	Piastre di scorrimento, 22, tutte XXX (2)	Placas del slipper, 22, Todos XXX (2)
TLR2966	Idler Gear & Shaft, 22 (2)	Zwischenrad u. -welle, 22 (2)	Pignon « fou » & arbre, 22 (2)	Ingranaggi & albero, 22 (2)	Piñón intermedio & Eje, 22 (2)
TLR2967	Gear Case, Rear Engine, 22	Getriebegehäuse, Heckmotor, 22	Carter de pignons, moteur AR, 22	Alloggiamento ingranaggi, motore posteriore, 22	Caja de transmisión, Motor trasero, 22
TLR2968	Gear Case, Mid Engine, 22	Getriebegehäuse, Mittelmotor, 22	Carter de pignons, moteur Centre, 22	Alloggiamento ingranaggi, motore centrale, 22	Caja de transmisión, Motor central, 22
TLR2972	Driveshaft Rebuild Kit, 22	Antriebswellen-Umbausatz, 22	Kit de reconstitution d'arbre de transmission, 22	Kit ricostruzione trasmissione, 22	Kit reparación de cárдан, 22
TLR2973	Rear Axle Spacer Set, 22	Abstandhaltersatz, Hinterachse, 22	Jeu de rondelles d'axe AR, 22	Set distanziatore assale posteriore, 22	Espaciadores para ejes traseros, 22
TLR2974	Drive Pin Set, 22	Mitnehmerstiftsatz, 22	Jeu d'axes d'entraînement, 22	Set perno trasmissione, 22	Kit de pins, 22
TLR2975	Rear Wheel Nut, 22, M4 (6)	Radmutter hinten, 22, M4 (6)	Écrou de roue AR, 22 M4 (6)	Dado ruota posteriore 22, M4 (6)	Tuerca trasera, 22, M4 (6)
TLR2984	Aluminum, Toe Plate, 3°, LRC, 22	Aluminumtrittleiste, 3°, LRC, 22	Plaque de pincement aluminium, 3°, LRC, 22	Alluminio, piastra convergenza, 3°, LRC, 22	Placa de convergencia aluminio, 3°, LRC, 22
TLR4140	Chassis, Machined, 22T	Fahrgestell, maschinell bearbeitet, 22T	Châssis, usiné, 22T	Chassis, lavorato, 22T	Chasis, Mecanizado, 22T



Part #	English	Deutsch	Français	Italiano	Español
TLR4153	Mud Guard Set, 22	Kotflügelsatz, 22	Jeu de garde-boue, 22	Set parafango, 22	Guardabarro, 22
TLR4154	Battery Trays, 22	Batterieträger, 22	Brides de batterie, 22	Vassoio batteria, 22	Bandejas de baterías, 22
TLR4155	Battery Straps, Hook & Loop, 22 (2)	Gurte, Haken u. Öse, Batterie, 22 (2)	Brides de batterie, brides de fixation, 22 (2)	Fascette batteria, ganci & fasce, 22 (2):	Soportes de las baterías, 22 (2)
TLR4156	Chassis Foam Set	Schaumstoffsatz, Fahrgestell	Jeu de mousse pour châssis	Set schiuma chassis	Kit de Foam del chasis
TLR4157	Motor Plate, 22	Motorschild, 22	Plaque de support moteur, 22	Piastra motore, 22	Bancada motor, 22
TLR4158	Motor Guard & Rear Bumper, 22	Motorabdeckung u. Stoßstange hinten, 22	Protection moteur & pare-chocs AR, 22	Protezione motore & paraurti posteriore, 22	Protector de motor & Parachoques, 22
TLR4161	Wing Stay Set, Rear/Mid Engine, 22	Kotflügelstützensatz, Heck-/Mittelmotor, 22	Jeu de fixation d'aile, moteur AR/Centre, 22	Set alette, motore posteriore / centrale, 22	Soporte de alerón, Motor trasero/central, 22
TLR4162	Rear Chassis Brace, Mid Engine, 22	Hinterer Fahrgestellklammer, Mittelmotor, 22	Renfort de châssis AR, moteur Centre, 22	Staffa chassis posteriore, motore mediano, 22	Placa trasera de chasis, Motor central, 22
TLR4163	Gear Cover & Plug, 22	Getriebeabdeckung u. Stopfen, 22	Carter de pignon et bouchon, 22	Coperchio e tappo ingranaggi, 22	Cubierta de transmisión & Tapa, 22
TLR4164	Gear Cover Plug, 22 (2)	Getriebeabdeckungsstopfen, 22 (2)	Bouchon de carter de pignon, 22 (2)	Tappo copertura ingranaggi, 22 (2)	Tapa de cubierta de transmisión 22 (2)
TLR5075	Shock Shaft, 3.5mm, Rear, Ti Nitride, 22T (2)	Dämpferwelle, 3,5 mm, hinten, Ti-Nitrid, 22T (2)	Tige d'amortisseur, 3,5 mm, AR, Ti Nitride, 22T (2)	Albero ammortizzatore, 3.5mm, posteriore, Nitruro di titanio, 22T (2)	Vástago, 3.5mm, Trasero, Ti Nitride, 22T (2)
TLR5076	Rear Shock Body Set, 22T (2)	Hinterer Dämpfergehäusesatz, 22T (2)	Jeu de corps d'amortisseur AR, 22T (2)	Set corpo ammortizzatore posteriore, 22T (2)	Cuerpos de amortiguador trasero, 22T (2)
TLR5077	Shock Tool Kit, 12mm Shock	Dämpferwerkzeugsatz, 12-mm-Dämpfer	Kit d'outils pour amortisseur, amortisseur 12 mm	Kit utensili ammortizzatori, ammortizzatore da 12mm	Herramienta de amortiguadores, 12mm
TLR5084	Rear Shock Body set, 22 (2)	Hinterer Dämpfergehäusesatz, 22 (2)	Jeu de corps d'amortisseur AR, 22 (2)	Set corpo ammortizzatore posteriore, 22 (2)	Cuerpos de amortiguador trasero, 22 (2)
TLR5085	Shock Cap Set, 22 (2)	Dämpferdeckelsatz, 22 (2)	Jeu de obturateur d'amortisseur, 22 (2)	Set cappuccio ammortizzatore,	Juego de tapa amortiguador, 22 (2)
TLR5086	Shock Cap, Bottom, 22 (2)	Dämpferdeckel unten, 22 (2)	Obturateur d'amortisseur, bas, 22 (2)	Cappuccio ammortizzatore, inferiore 22 (2)	Tapa amortiguador, Inferior, 22 (2)



Part #	English	Deutsch	Français	Italiano	Español
TLR5088	Shock Shaft, 3.5mm, Rear, Ti Nitride, 22 (2)	Dämpferwelle, 3,5 mm, hinten, Ti-Nitrid, 22 (2)	Tige d'amortisseur, 3,5 mm, AR, Ti Nitride, 22 (2)	Albero ammortizzatore, 3.5mm, posteriore, Nitruro di titanio, 22 (2)	Vástago, 3.5mm, Trasero, Ti Nitride, 22 (2)
TLR5089	Bladder Set, 12mm Shocks, 22 (4)	Blasensatz, 12-mm-Dämpfer, 22 (4)	Jeu de soufflets, amortisseurs 12 mm, 22 (4)	Set camera d'aria, ammortizzatori 12mm, 22 (4)	Membranas, Amortiguadores 12mm, 22 (4)
TLR5090	Piston Set and Bushings, 12mm Shock, 22	Kolbensatz und Buchsen, 12-mm-Dämpfer, 22	Jeu et bagues de pistons, amortisseurs 12 mm, 22	Set pistone boccola, ammortizzatori 12mm, 22	Pistones y casquillos, Amortiguador 12mm, 22
TLR5092	Upper Shock Bushing, 22 (4)	Obere Dämpferbuchse, 22 (4)	Bague supérieure d'amortisseur, 22 (4)	Boccola ammortizzatore superiore, 22 (4)	Casquillo superior de amortiguadores, 22 (4)
TLR5093	Shock Shaft O-ring Set, 22	O-Ringsatz, Dämpferwelle, 22	Jeu de joints toriques de tige d'amortisseur, 22	Set o-ring albero ammortizzatore, 22	Tóricas de amortiguador, 22
TLR5094	Shock Preload Adjuster Nut with O-rings	Einstellmutter, Dämpfervorspannung, mit O-Ringen	Écrou de réglage de précontrainte d'amortisseur avec joints toriques	Dado di regolazione carica ammortizzatore con O-ring	Tuerca de precarga de amortiguador con tóricas
TLR5095	Shock End Set with Spring Cups, 12mm Shock, 22	Dämpferendstücksatz mit Federtellern, 12-mm-Dämpfer, 22	Jeu d'extrémités d'amortisseurs avec coupelles de ressort, amortisseur 12 mm, 22	Set finecorsa ammortizzatore con coppe della molla, ammortizzatore da 12mm, 22	Rótulas de amortiguador con cazoleta, amortiguador 12mm, 22
TLR5096	Shock Limiter Set, 3.5mm Shaft, 22	Dämpferbegrenzungssatz, 3,5 mm, Welle, 22	Jeu de limiteurs d'amortisseur, tige de 3,5 mm, 22	Set limitatore ammortizzatore, 3.5mm albero, 22	Imitador de recorrido, eje 3.5mm, 22
TLR5097	Shock Standoff, 22	Dämpferabstandsbolzen, 22	Entretoise d'amortisseur, 22	Stallo ammortizzatore, 22	Sujeción superior amortiguador, 22
TLR5168	Shock Spring, Rear, 2.3 Rate, Pink, Rear, 22	Dämpferfeder hinten, Federkonstante 2,0, rosa, 22	Ressort d'amortisseur, AR, Taux 2.0 Rose, 22	Molla ammortizzatore, posteriore, 2,0 rosa, 22	Muelle, Trasero, 2.0 Rosa, 22
TLR5178	Shock Spring, Front, 2.3 Rate, Pink, 22T	Dämpferfeder vorne, Federkonstante 3.5, rosa, 22T	Ressort d'amortisseur, AV, Taux 3.5 Rose, 22T	Molla ammortizzatore, anteriore, 3,5 rosa, 22T	Muelle delantero, 3.5 Rosa, 22T
TLR5182	Shock Spring, Front, 3.5 Rate, Green, 22T	Dämpferfeder vorne, Federkonstante 3.5, grün, 22T	Ressort d'amortisseur, AV, Taux 3.5 Vert, 22T	Molla ammortizzatore, anteriore, 3,5 verde, 22T	Muelle delantero, 3.5 Verde, 22T
TLR5900	Button Head Screws, M3 x 5mm (10)	Halbrundkopfschrauben, M3 x 5 mm (10)	Vis à tête bouton, M3 x 5 mm (10)	Viti a testa bombata, M3 x 5mm (10)	Tornillo, M3 x 5mm (10)



Part #	English	Deutsch	Français	Italiano	Español
TLR5901	Button Head Screws, M3 x 6mm (10)	Halbrundkopfschrauben, M3 x 6 mm (10)	Vis à tête bouton, M3 x 6 mm (10)	Viti a testa bombata, M3 x 6mm (10)	Tornillo, M3 x 6mm (10)
TLR5902	Button Head Screws, M3 x 8mm (10)	Halbrundkopfschrauben, M3 x 8 mm (10)	Vis à tête bouton, M3 x 8 mm (10)	Viti a testa bombata, M3 x 8mm (10)	Tornillo, M3 x 8mm (10)
TLR5903	Button Head Screws, M3 x 10mm (10)	Halbrundkopfschrauben, M3 x 10 mm (10)	Vis à tête bouton, M3 x 10 mm (10)	Viti a testa bombata, M3 x 10mm (10)	TLR5903 Tornillo, M3 x 10mm (10)
TLR5904	Button Head Screws, M3 x 12mm (10)	Halbrundkopfschrauben, M3 x 12 mm (10)	Vis à tête bouton, M3 x 12 mm (10)	Viti a testa bombata, M3 x 12mm (10)	Tornillo, M3 x 12mm (10)
TLR5905	Button Head Screws, M3 x 18mm (10)	Halbrundkopfschrauben, M3 x 18 mm (10)	Vis à tête bouton, M3 x 18 mm (10)	Viti a testa bombata, M3 x 18mm (10)	Tornillo, M3 x 18mm (10)
TLR5906	Button Head Screws, M3 x 35mm (10)	Halbrundkopfschrauben, M3 x 35 mm (10)	Vis à tête bouton, M3 x 35 mm (10)	Viti a testa bombata, M3 x 35mm (10)	Tornillo, M3 x 35mm (10)
TLR5907	Button Head Screws, M3 x 40mm (4)	Halbrundkopfschrauben, M3 x 40 mm (4)	Vis à tête bouton, M3 x 40 mm (4)	Viti a testa bombata, M3 x 40mm (4)	Tornillo, M3 x 40mm (4)
TLR5908	Button Head Screws, M3 x 44mm (4)	Halbrundkopfschrauben, M3 x 44 mm (4)	Vis à tête bouton, M3 x 44 mm (4)	Viti a testa bombata, M3 x 44mm (4)	Tornillo, M3 x 44mm (4)
TLR5909	Button Head Screws, M3 x 16mm (10)	Halbrundkopfschrauben, M3 x 16 mm (4)	Vis à tête bouton, M3 x 16 mm (4)	Viti a testa bombata, M3 x 16mm (4)	Tornillo, M3 x 16mm (4)
TLR5930	Cap Head Screws, M3 x 8mm (10)	Innensechskantschrauben, M3 x 8 mm (10)	Vis à tête creuse, M3 x 8 mm (10)	Viti a testa bombata, M3 x 8mm (10)	Tornillos C/Allen, M3 x 8mm (10)
TLR5931	Cap Head Screws, M3 x 5mm (10)	Innensechskantschrauben, M3 x 5 mm (10)	Vis à tête creuse, M3 x 5 mm (10)	Viti a testa bombata, M3 x 5mm (10)	Tornillos C/Allen, M3 x 5mm (10)
TLR5934	Cap Head Screws, M3 x 16mm (10)	Innensechskantschrauben, M3 x 16 mm (10)	Vis à tête creuse, M3 x 16 mm (10)	Viti a testa bombata, M3 x 16mm (10)	Tornillos C/Allen, M3 x 16mm (10)
TLR5935	Cap Head Screws, M3 x 20mm (4)	Innensechskantschrauben, M3 x 20 mm (4)	Vis à tête creuse, M3 x 20 mm (4)	Viti a testa bombata, M3 x 20mm (4)	Tornillos C/Allen, M3 x 20mm (4)
TLR5959	Flathead Screw, M2.5 x 16mm, (10)	Flachkopfschrauben, M2.5 x 16 mm (10)	Vis à tête plate, M2.5 x 16 mm (10)	Viti a testa piatta, M2.5 x 16mm (10)	Tornillos avellanados, M2.5 x 16mm (10)
TLR5960	Flathead Screws, M2 x 6mm (10)	Flachkopfschrauben, M2 x 6 mm (10)	Vis à tête plate, M2 x 6 mm (10)	Viti a testa piatta, M2 x 6mm (10)	Tornillos avellanados, M2 x 6mm (10)
TLR5961	Flathead Screws, M3 x 8mm (10)	Flachkopfschrauben, M3 x 8 mm (10)	Vis à tête plate, M3 x 8 mm (10)	Viti a testa piatta, M3 x 8mm (10)	Tornillos avellanados, M3 x 8mm (10)

Part #	English	Deutsch	Français	Italiano	Español
TLR5962	Flathead Screws, M3 x 10mm (10)	Flachkopfschrauben, M3 x 10 mm (10)	Vis à tête plate , M3 x 10 mm (10)	Viti a testa piatta, M3 x 10mm (10)	Tornillos avellanados, M3 x 10mm (10)
TLR5963	Flathead Screw, M3 x 12mm (10)	Flachkopfschraube, M3 x 12 mm (10)	Vis à tête plate , M3 x 12 mm (10)	Viti a testa piatta, M3 x 12mm (10)	Tornillos avellanados, M3 x 12mm (10)
TLR5964	Flathead Screw, M3 x 16mm (10)	Flachkopfschraube, M3 x 16 mm (10)	Vis à tête plate , M3 x 16 mm (10)	Viti a testa piatta, M3 x 16mm (10)	Tornillos avellanados, M3 x 16mm (10)
TLR5965	Flathead Screw, M3 x 20mm (10)	Flachkopfschraube, M3 x 20 mm (10)	Vis à tête plate , M3 x 20mm (10)	Viti a testa piatta, M3 x 20mm (10)	Tornillos avellanados, M3 x 20mm (10)
TLR6018	Rod End, 4.8mm, 22	Gelenkkopf, 4,8 mm, 22	Extrémités de tige, 4,8 mm, 22	Estremità barra, 4,8mm, (22)	Rótula, 4.8mm, 22
TLR6023	Ball Stud, 4.8mm, 10mm, 22 (4)	Kugelgelenkbolzen, 4,8 mm, 10 mm, 22 (4)	Goujon à rotule, 4,8 mm, 10 mm, 22 (4)	Perno della sfera, 4.8mm, 10mm, 22 (4)	Bolas, 4.8mm, 10mm, 22 (4)
TLR6024	Ball Stud, 4.8mm, 8mm, 22 (4)	Kugelgelenkbolzen, 4,8 mm, 8 mm, 22 (4)	Goujon à rotule, 4,8 mm, 8mm, 22 (4)	Perno della sfera, 4.8mm, 8mm, 22 (4)	Bolas, 4.8mm, 8mm, 22 (4)
TLR6025	Ball Stud, 4.8mm, 6mm, 22 (4)	Kugelgelenkbolzen, 4,8 mm, 6 mm, 22 (4)	Goujon à rotule, 4,8 mm, 6mm, 22 (4)	Perno della sfera, 4.8mm, 6mm, 22 (4)	Bolas, 4.8mm, 6mm, 22 (4)
TLR6028	Ball Stud, Short Neck, 5mm (2)	Kugelgelenkbolzen, kurzer Hals, 5 mm (2)	Goujon à rotule, cou court, 5 mm (2)	Perno della sfera, collo corto, 5mm (2)	Bolas, Cuello corto, 5mm (2)
TLR6066	Turnbuckle, 75mm, 22T (2)	Spannschloss, 75 mm, 22T (2)	Tendeur, 75 mm, 22T (2)	Tenditore, 75mm, 22T (2)	Tirante, 75mm, 22T (2)
TLR6067	Turnbuckle, 70mm, 22T (2)	Spannschloss, 70 mm, 22T (2)	Tendeur, 70 mm, 22T (2)	Tenditore, 70mm, 22T (2)	Tirante, 70mm, 22T (2)
TLR6079	Hinge Pin Set, Front, Inner, 22 (2)	Gelenkbolzensatz vorne innen, 22 (2)	Jeu de broche d'axe, AV, intérieur, 22 (2)	Set perno cardine, anteriore , interno, 22 (2)	Pasadores, Delanteros, Interior, 22 (2)
TLR6105	E-Clips, 3mm Shaft (12)	E-Clips, 3-mm-Welle (12)	E-Clips, axe 3 mm (12)	E-Clips, 3mm albero (12)	E-Clips, 3mm (12)
TLR6288	Setscrew, M3 x 2.5mm (10)	Gewindestift, M3 x 2,5 mm (10)	Vis de réglage, M3 x 2,5 mm (10)	Vite di regolazione, M3 x 2,5mm (10)	Kit de tornillos, M3 x 2.5mm (10)
TLR6289	Setscrew, M3 x 5mm (10)	Gewindestift, M3 x 5 mm (10)	Vis de réglage, M3 x 5 mm (10)	Vite di regolazione, M3 x 5mm (10)	Kit tornillos, M3 x 5mm (10)
TLR6312	Locknut, M2.5 x .45 x 5mm (6)	Sicherungsmutter, M2,5 x 0,45 x 5 mm (6)	Écrou de blocage M2.5 x .45 x 5 mm (6)	Dado di fermo, M2.5 x 45 x 5mm (6)	Tuerca, M2.5 x .45 x 5mm (6)
TLR6313	Locknut, M3 x .5 x 5.5mm (10)	Sicherungsmutter, M3 x 0,5 x 5,5mm (10)	Écrou de blocage M3 x .5 x 5,5 mm (10)	Dado di fermo, M2.5 x 5 x 5,5mm (10)	Tuerca, M3 x .5 x 5.5mm (10)
TLR6314	Nut Insert, M3 x 14.5, 22 (2)	Gewindebuchse, M3 x 14,5, 22 (2)	Insert d'écrou, M3 x 14.5, 22 (2)	Inserto dado, M3 x 14.5, 22 (2)	Tuerca, M3 x 14.5, 22 (2)
TLR6352	Washers, M3 (10)	Unterlegscheiben, M3 (10)	Rondelles, M3 (10)	Rondelle, M3 (10)	Arandelas, M3 (10)
TLR6933	Bearing Kit, 22	Lagersatz, 22	Kit de roulements, 22	Kit cuscinetto, 22	Kit de rodamientos, 22
TLR7002	Wheel, Front & Rear, Yellow, 22T	Felge Vorne/Hinten, Gelb: 22T	Jantes av et arr, jaune, 22T	Ruota anteriore e posteriore gialla, 22T	Llanta, delantera y trasera, amarillo, 22T
TLR8058	Truck Body, Rear Motor, 22T	Monstertruck Karosserie, Heckmotor: 22T	Carrosserie truck, moteur arr, 22T	Carrozzeria Truck, motore posteriore, 22T	Carrocería, motor trasero, 22T
TLR8059	Truck Body, Mid Motor, 22T	Monstertruck Karosserie, Mittelmotor: 22T	Carrosserie truck, moteur central, 22T	Carrozzeria Truck, motore centrale, 22T	Carrocería, motor central, 22T
TLR8201	Wing Washer (4): 22/T	Unterlegscheiben Flügel (4): 22T	Rondelles d'aileron (4): 22/T	Rondella (4): 22/T	Arandelas del alerón (4): 22/T
TLR8202	Body Clips, Black (12): 22/T	Body Clips, Schwarz (12): 22/T	Clips de carrosserie, noir (12) : 22/T	Clips per carrozzeria, Nere (12): 22/T	Clips carrocería, negros (12): 22/T
TLR8301	Decal Sheet, 22T	Dekorbogen, 22T	Planche de décalcomanies	Foglio decalcomania, 22T	Adhesivos, 22T

Option Parts\Optionale Bauteile\Pièces optionnelles\Pezzi opzionali\Piezas Opcionales

Part #	English	Deutsch	Français	Italiano	Español
LOSA3954	Gear Differential, Complete: 22RTR	Getriebedifferential, Komplett: 22 RTR	Pignons de diff Complets : 22RTR	Ingranaggi differenziale, Completo: 22RTR	Diferencial de planetarios completo: 22RTR
LOSA3985	84T 48 Pitch Kevlar Spur Gear	84T 48 Pitch Kevlar Zahnrad	Couronne Kevlar 84T 48dp	84T 48 Ingranaggio Pitch Kevlar	Corona 84T 48 de Kevlar
LOSA5006	Upper & Lower Shock Caps: 22RTR	Stoßdämpferendkappen: 22RTR	Bouchons sup et inf d'amortisseurs : 22RTR	Tappi inferiore e superiore per ammortizzatore: 22RTR	Tapa superior e inferior de amortiguadores: 22RTR
LOSA99172	Camber Gauge	Sturzlehre	Jauge de carrossage	Misuratore di camber	Medidor de caídas
LOSA99173	Ride Height Gauge	Höhenmesser	Jauge de garde au sol	Misuratore di altezza	Medidor de altura

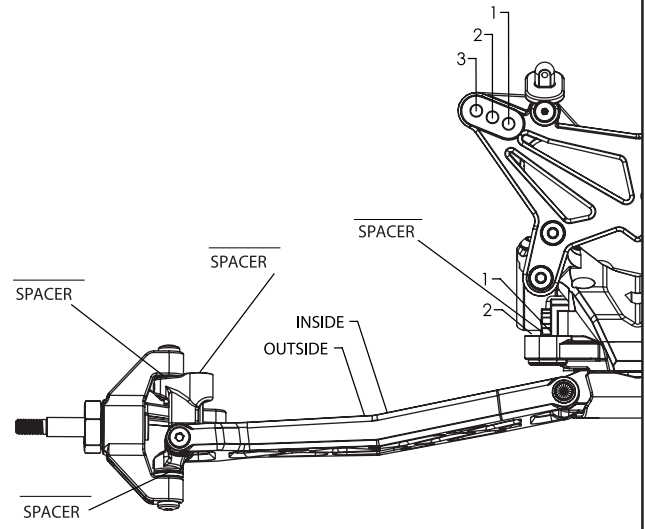
Part #	English	Deutsch	Français	Italiano	Español
TLRI043	Threaded Front King Pin, TiNitride, (2), 22	Achsschenkelgewindebolzen vorne, Ti-Nitrid, (2), 22	Axe de fusée AV filetée, TiNitride, 22 (2)	PernoKingfilettatoanteriore, Nitruro di titanio, (2), 22	KingPindelanterosca do, TiNitride, (2), 22
TLRI044	Aluminum Carrier, 0°, 22	Aluminumträger, 0°, 22	Porte-fusée aluminium, 0°, 22	Supporto in alluminio, 0°, 22	Portamanguetas de aluminio, 0°, 22
TLRI045	Aluminum Carrier, 3°, 22	Aluminumträger, 3°, 22	Porte-fusée aluminium, 3°, 22	Supporto in alluminio, 3°, 22	Portamanguetas de aluminio, 3°, 22
TLRI046	Aluminum Carrier, 5°, 22	Aluminumträger, 5°, 22	Porte-fusée aluminium, 5°, 22	Supporto in alluminio, 5°, 22	Portamanguetas de aluminio, 5°, 22
TLRI047	Aluminum Carrier, 10°, 22	Aluminumträger, 10°, 22	Porte-fusée aluminium, 10°, 22	Supporto in alluminio, 10°, 22	Portamanguetas de aluminio, 10°, 22
TLRI051	Front Pivot & Kick Shims, 22	Vordere Drehachse u. Rückstoßscheiben, 22	Pivot AV & cales de battement, 22	Cardine anteriore e & rondelle, 22	Arandelas de Kick y Roll center delanteras, 22
TLRI057	Caster Block, 10°, 22	Lenkrollensperre, 10°, 22	Block de chasse, 10°, 22	Blocco ruote, 10°, 22	Mangueta, 10°, 22
TLRI058	Caster Block, 5°, 22	Lenkrollensperre, 5°, 22	Block de chasse, 5°, 22	Blocco ruote, 5°, 22	Mangueta, 5°, 22
TLRI060	Caster Block, 0°, 22	Lenkrollensperre, 0°, 22	Block de chasse, 0°, 22	Blocco ruote, 0°, 22	Mangueta, 0°, 22
TLRII05	Aluminum Front Pivot, 30°, 22T	Vordere Aluminiumdrehachse, 30°, 22T	Pivot AV aluminium, 30°, 22T	Alluminio Front Pivot, 30°, 22T	Soporte pasadores delantero en aluminio, 30°, 22T
TLRI550	Servo Mounts, Aluminum: 22	Servohalter Aluminium: 22	Supports de servo, aluminium : 22	Supporto servo, alluminio: 22	Soportes del servo, aluminio: 22
TLRI555	Aluminum Servo Horn 23 Spline	Aluminiumservohupe 23 Schiebekeil	Bras de servo aluminium, cannelure 23,	Servo Horn alluminio linguetta da 23,	Brazo de servo de aluminio 23,
TLRI556	Aluminum Servo Horn 24 Spline	Aluminiumservohupe 24 Schiebekeil	Bras de servo aluminium, cannelure 24,	Servo Horn alluminio linguetta da 24	Brazo de servo de aluminio 24
TLRI557	Aluminum Servo Horn 25 Spline	Aluminiumservohupe 25 Schiebekeil	Bras de servo aluminium, cannelure 25,	Servo Horn alluminio linguetta da 25	Brazo de servo de aluminio 25
TLR2045	Anti-Squat Tuning Set, HRC, 22	Anti-Squat-Tuningsatz, HRC, 22	Jeu d'optimisation d'anticabrage, HRC, 22	Set impostazione anti-squat, HRC, 22	Kit de ajuste de Anti-squat, HRC, 22
TLR2056	Ti Nitride Hinge Pin, Rear Outer, Threaded (2), 22	Gelenkbolzen hinten außen, Ti-Nitrid, mit Gewinde (2), 22	Broche d'axe Ti Nitride, extérieur AR, filetée, 22 (2)	Nitruro di titanio perno cardine, posteriore esterno filettato (2), 22	Pasador roscado Ti Nitride, Trasero Exterior (2)
TLR2057	Aluminum Rear Hubs, 0 degree, 22	Hintere Aluminiumnaben, 0 Grad, 22	Moyeux AR aluminium, 0 degré, 22	Mozzi posteriori in alluminio, 0 gradi, 22	Manguetas traseras de aluminio, 0 grados, 22
TLR2059	Front Camber Block, Aluminum: 22	Spurstangenhalter vorne Aluminium: 22	Bloc de carrossage avant, aluminium : 22	Blocco camber anteriore, alluminio: 22	Módulo camber delantero, aluminio: 22
TLR2060	Rear Camber Block, Mid Motor, Aluminum	Aluminium Spurstangenhalter hinten Heck Motor	Bloc de carrossage arrière, aluminium	Blocco camber posteriore, motore centrale, alluminio	Módulo camber trasero, motor trasero, aluminio
TLR2061	Rear Camber Block, Mid Motor, Aluminum	Aluminium Spurstangenhalter hinten Mittel Motor	Bloc de carrossage arrière, moteur central, aluminium	Blocco camber posteriore, motore centrale, alluminio	Módulo camber trasero, motor central, aluminio
TLR2947	Tungsten Carbide Thrust Balls, 2mm (6)	Wolfram Carbid Differentialkugeln 2mm (6)	Billes de butée en Carbone de Tungstène, 2mm (6)	Sfere di spinta Tungsten Carbide, 2mm (6)	Bolas de tungsteno para rodamiento axial, 2mm (6)
TLR2950	Aluminum Hex Diff Wrench, 22	Aluminiuminbusschlüssel, Differenzial, 22	Clé d'écrou de différentiel, aluminium, 22	Chiave dado differenziale alluminio, 22	Herramienta de aluminio para diferencial, 22
TLR2951	Tungsten Carbide Diff Balls, 3/32 (14)	Wolfram Carbid Differentialkugeln 3/32 (14)	Billes de différentiel en Carbone de Tungstène, 3/32 (14)	Sfere Diff Tungsten Carbide, 3/32 (14)	Bolas de tungsteno para diferencial 3/32 (14)
TLR2979	Aluminum, Toe Plate, 3.5°, HRC, 22	Aluminumtrittleiste, 3.5°, HRC, 22	Plaque de pincement aluminium, 3.5°, HRC, 22	Alluminio, piastra convergenza, 3.5°, HRC, 22	Placa de convergencia aluminio, 3.5°, HRC, 22
TLR2980	Aluminum, Toe Plate, 4°, HRC, 22	Aluminumtrittleiste, 4°, HRC, 22	Plaque de pincement aluminium, 4°, HRC, 22	Alluminio, piastra convergenza, 4°, HRC, 22	Placa de convergencia aluminio, 4°, HRC, 22
TLR2981	Aluminum, Toe Plate, 4.5°, HRC, 22	Aluminumtrittleiste, 4.5°, HRC, 22	Plaque de pincement aluminium, 4.5°, HRC, 22	Alluminio, piastra convergenza, 4.5°, HRC, 22	Placa de convergencia aluminio, 4.5°, HRC, 22
TLR2982	Aluminum, Toe Plate, 5°, HRC, 22	Aluminumtrittleiste, 5°, HRC, 22	Plaque de pincement aluminium, 5°, HRC, 22	Alluminio, piastra convergenza, 5°, HRC, 22	Placa de convergencia aluminio, 5°, HRC, 22
TLR2983	Aluminum, Toe Plate, 3°, HRC, 22	Aluminumtrittleiste, 3°, HRC, 22	Plaque de pincement aluminium, 3°, HRC, 22	Alluminio, piastra convergenza, 3°, HRC, 22	Placa de convergencia aluminio, 3°, HRC, 22
TLR2985	Aluminum, Toe Plate, 3.5°, LRC, 22	Aluminumtrittleiste, 3.5°, LRC, 22	Plaque de pincement aluminium, 3.5°, LRC, 22	Alluminio, piastra convergenza, 3.5°, LRC, 22	Placa de convergencia aluminio, 3.5°, LRC, 22
TLR2986	Aluminum, Toe Plate, 4°, LRC, 22	Aluminumtrittleiste, 4°, LRC, 22	Plaque de pincement aluminium, 4°, LRC, 22	Alluminio, piastra convergenza, 4°, LRC, 22	Placa de convergencia aluminio, 4°, LRC, 22

Part #	English	Deutsch	Français	Italiano	Español
TLR2987	Aluminum Toe Plate, 4.5°. LRC, 22	Aluminumtrittleiste, 4,5°, LRC, 22	Plaque de pincement aluminium, 4,5°, LRC, 22	Alluminio, piastra convergenza, 4.5°. LRC, 22	Placa de convergencia aluminio, 4.5°. LRC, 22
TLR2988	Aluminum Toe Plate, 5°, LRC, 22	Aluminumtrittleiste, 5°, LRC, 22	Plaque de pincement aluminium, 5°, LRC, 22	Alluminio, piastra convergenza, 5°,LRC, 22	Placa de convergencia aluminio, 5°, LRC, 22
TLR2990	22 Slipper Adjustment Tool	22 Einstellwerkzeug Rutschkupplung	Outil de réglage de slipper, 22	22 Attrezzo regolazione attrito	Herramienta para slipper 22
TLR3979	76T Spur Gear, 22	76T Stirnradgetriebe, 22	Couronne 76 dents, 22	76T ruota dentata, 22	Corona 76T, 22
TLR3980	78T Spur Gear, 22	78T Stirnradgetriebe, 22	Couronne 78 dents, 22	78T ruota dentata, 22	Corona 78T, 22
TLR4150	Aluminum Battery Tray, 22	Aluminiumbatterieträger, 22	Réceptacle de batterie aluminium, 22	Alluminio vassoio batteria, 22	Soporte de baterías en aluminio, 22
TLR4151	Brass Weight System, Mid Engine, 22	Messinggewichtsschema, Mitelmotor, 22	Système de poids laiton, moteur centre, 22	Sistema di pesatura in ottone, motore centrale, 22	Kit de lastre de latón, Motor central, 22
TLR4166	Titanium Shock Mounts, 22 (4)	Titandämpferbefestigungen, 22 (4)	Supports d'amortisseur titane, 22 (4)	Supporti in titanio ammortizzatore, 22 (4)	Soportes de amortiguador en titanio, 22 (4)
TLR5074	Low Friction Shock O-rings (8)	Stoßdämpferdichtungen (8)	Joints toriques d'amortisseurs basse friction (8)	O-rings ammortizzatori basso attrito (8)	Tóricas de baja fricción (8)
TLR5099	Aluminum, Shock Tool Kit, 12mm Shock	Aluminiumdämpferwerkzeug-satz, 12-mm-Dämpfer	Kit d'outils pour amortisseur aluminium, amortisseur 12 mm	Kit utensili ammortizzatori, ammortizzatore da 12mm, Alluminio	Herramienta de amortiguador aluminio, 12mm
TLR5162	Shock Spring, Rear, 1.6 Rate, Grey, 22T	Dämpferfeder hinten, Federkonstante 1,6, grau, 22T	Ressort d'amortisseur, AR, Taux 1.6 Gris, 22T	Molla ammortizzatore, posteriore, 1.6 grigio, 22T	Muelle trasero, 1.6 Gris, 22T
TLR5163	Shock Spring, Rear, 1.8 Rate, White, 22T	Dämpferfeder hinten, Federkonstante 1,8, weiß, 22T	Ressort d'amortisseur, AR, Taux 1.8 Blanc, 22T	Molla ammortizzatore, posteriore, 1.8 bianca, 22T	Muelle trasero, 1.8 Blanco, 22T
TLR5164	Shock Spring, Rear, 2.0 Rate, Yellow, 22T	Dämpferfeder hinten, Federkonstante 2,0, gelb, 22T	Ressort d'amortisseur, AR, Taux 2.0 Jaune, 22T	Molla ammortizzatore, posteriore, 2,0 gialla, 22T	Muelle, Trasero, 2.0 Amarillo, 22T
TLR5179	Shock Spring, Front, 2.5 Rate Red, 22T	Dämpferfeder vorne, Federkonstante 2,5, Rote, 22T	Ressort d'amortisseur, AV, Taux 2.5 rouge, 22T	Molla ammortizzatore, anteriore, 2,5 rosso, 22T	Muelle delantero, 2.5 rojo, 22T
TLR5180	Shock Spring, Front, 2.9 Rate, Orange, 22T	Dämpferfeder vorne, Federkonstante 2,9, orange, 22T	Ressort d'amortisseur, AV, Taux 2.9 Orange, 22T	Molla ammortizzatore, anteriore, 2,9 arancione, 22T	Muelle delantero, 2.9 Naranja, 22T
TLR5181	Shock Spring, Front, 3.2 Rate, Silver, 22T	Dämpferfeder vorne, Federkonstante 3,2, silber, 22T	Ressort d'amortisseur, AV, Taux 3.2 Argent, 22T	Molla ammortizzatore, anteriore, 3,2 argentata, 22T	Muelle delantero, 3.2 Plata, 22T
TLR6019	Ballstud/Hub Spacer Set, Aluminum, 22	Kugelgelenkbolzen-/Nabenabstandhaltersatz, Aluminum, 22	Jeu de goujons à rotule/ronnelles de fusée aluminium, 22	Perno della sfera / Set distanziatore mozzo, alluminio, 22	Bolas/Espaciadores, Aluminio, 22
TLR6030	Titanium Ball Stud, 4.8 x 6mm (2)	Kugelgelenkbolzen, Titan, 4,8 x 6 mm (2)	Goujon à rotule titane 4,8 x 6 mm (2)	Perno della sfera, titanio 4.8 x 6mm (2)	Bolas de titanio, 4.8 x 6mm (2)
TLR6031	Titanium Ball Stud, 4.8 x 8mm (2)	Kugelgelenkbolzen, Titan, 4,8 x 8 mm (2)	Goujon à rotule titane 4,8 x 8 mm (2)	Perno della sfera, titanio 4.8 x 8mm (2)	Bolas de titanio, 4.8 x 8mm (2)
TLR6032	Titanium Ball Stud, 4.8 x 10mm (2)	Kugelgelenkbolzen, Titan, 4,8 x 10 mm (2)	Goujon à rotule titane 4,8 x 10 mm (2)	Perno della sfera, titanio 4.8 x 10mm (2)	Bolas de titanio, 4.8 x 10mm (2)
TLR6068	Titanium Turnbuckle Kit (6): 22T	Titan Gewindestangen Kit (6):22T	Kit de biellettes titane (6) : 22T	Kit tenditore titanio (6) : 22T	Tirantes de titanio (6) : 22T
TLR7003	Front and Rear Wheel, White: 22T	Felge Vorne/Hinten, Weiß: 22T	Jantes av et arr, blanc : 22T	Ruota anteriore e posteriore, bianca: 22T	Llantas delantera y trasera, blanco: 22T
TLR8300	TLR Decal Sheet	TLR-Dekorbogen	Planche de décalcomanies TLR	TLR Foglio con decalcomanie	Adhesivos TLR
TLR99101	Shock Shaft Pliers	Dämpfer Kolbenstange Zange	Pince à tige d'amortisseur	Pinze albero ammortizzatore	Alicates para vástagos de amortiguador
TLR99102	Turnbuckle Wrench, 22, 8B, 8T	Stellschlüssel für Gewindestift, 22, 8B, 8T	Clé à biellettes ,22, 8B, 8T	Chiave tenditore, 22, 8B, 8T	Herramienta para ajustar tirantes, 22, 8B, 8T

Name: _____		Date: _____	Event: _____
City: _____		Track: _____	
Track Conditions: <input type="checkbox"/> Indoor <input type="checkbox"/> Tight <input type="checkbox"/> Smooth <input type="checkbox"/> Hard Packed <input type="checkbox"/> Blue Groove <input type="checkbox"/> Wet <input type="checkbox"/> Grass <input type="checkbox"/> Low Bite <input type="checkbox"/> High Bite <input type="checkbox"/> Outdoor <input type="checkbox"/> Open <input type="checkbox"/> Rough <input type="checkbox"/> Loose/Loamy <input type="checkbox"/> Dry <input type="checkbox"/> Dusty <input type="checkbox"/> Astro Turf <input type="checkbox"/> Med Bite <input type="checkbox"/> Other _____			

Front Suspension

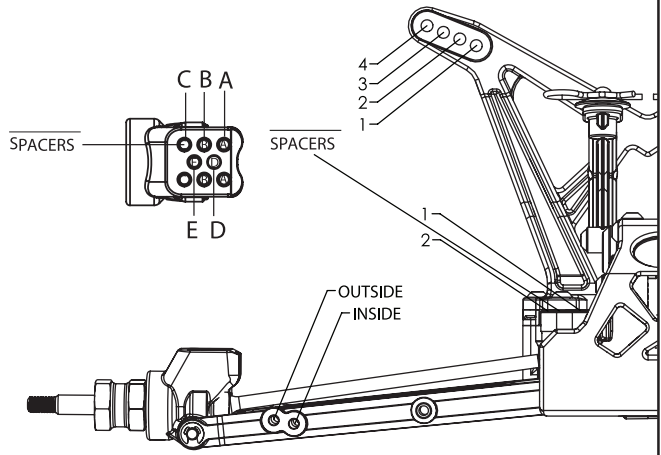
Toe: _____
 Ride Height: _____
 Camber: _____
 Caster: 0° 3° 5° 10°
 Kick Angle: 20° 25° 30°
 Sway Bar: _____
 Shock Type: Bladder Emulsion Oil: _____
 Piston: _____
 Spring: _____
 Shock Limiters: _____
 Shock Location: _____
 Bump Steer: _____
 Camber Link: _____



Notes: _____

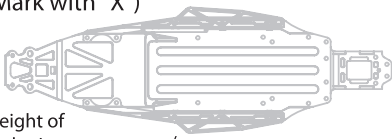
Rear Suspension

Chassis Configuration: Rear Motor Mid Motor
 Differential: Ball Diff Gear Diff Gear Diff Fluid: _____
 Toe: _____
 Anti-Squat: _____
 Roll Center: Low Roll Center (LRC) High Roll Center (HRC)
 Ride Height: _____
 Camber: _____
 Rear Hub Spacing: _____
 Hex Width: _____
 Sway Bar: _____
 Shock Type: Bladder Emulsion Oil: _____
 Piston: _____
 Spring: _____
 Shock Limiters: _____
 Camber Link: _____
 Shock Locations: _____
 Spoiler: _____
 Battery Position: _____



Electronics

Radio: _____ Timing Advance: _____
 Servo: _____ Throttle/Brake Expo: _____
 ESC: _____ Servo Expo: _____
 Initial Brake: _____ Throttle/Brake EPA: _____
 Drag Brake: _____ Motor: _____
 Throttle Profile: _____ Pinion: _____ Spur: _____
 Battery: _____

Weight Placement (Mark with "X")  Weight of each piece _____ oz./g	Tires Front: _____ Rear: _____ Notes: _____	Compound _____ _____ _____	Insert _____ _____ _____	Additive _____ _____ _____
	_____ _____ _____			
	_____ _____ _____			



TLRACING.COM

Printed 09/2011 © 2011 Horizon Hobby, Inc. Team Losi, the TLR logo and Losi-Lok are trademarks or registered trademarks of Horizon Hobby, Inc. 800-0445 30492.1

Team Losi Racing,
an exclusive brand of
Horizon Hobby, Inc.
4710 East Guasti Road
Ontario, CA 91761

Horizon Hobby, Inc.
4105 Fieldstone Road,
Champaign, IL 61822 USA

Horizon Hobby Limited
Units 1-4 Ployters Rd
Staple Tye, Harlow, Essex
CM18 7NS, United Kingdom

Horizon Hobby GmbH
Christian-Junge-Straße 1
25337 Elmshorn, Germany
